



**The Old Workshop, Lower Boyndon Road, Maidenhead, Berkshire, SL6 4DD**

# THE OLD WORKSHOP, LOWER BOYNDON ROAD, MAIDENHEAD, BERKSHIRE, SL6 4DD

**PRICE: £799,950 FREEHOLD**

An opportunity to acquire this brand new three bedroom detached single storey residence which has been completed to a high level of finish and specification, conveniently located for the town centre and within approx 0.5 miles of the mainline railway station (Paddington/Elizabeth Line). The property features a stunning large open plan kitchen/dining/living room with direct access onto the secluded rear garden, main bedroom with en-suite shower room and two further good size bedrooms occupying this most convenient location and ready for occupation.

**\*SPACIOUS ENTRANCE HALL \*LARGE OPEN PLAN KITCHEN/DINING/LIVING ROOM \*MAIN BEDROOM WITH EN-SUITE SHOWER ROOM \*TWO FURTHER BEDROOMS (BOTH WITH ACCESS ONTO A PRIVATE COURTYARD GARDEN) \*FAMILY BATHROOM \*DRIVEWAY PARKING VIA GATED ACCESS \*ENCLOSED PRIVATE REAR GARDEN \*NEW BUILD WARRANTY \*HIGH LEVEL OF FINISH & SPECIFICATION \*CONVENIENT POSITION FOR TOWN & STATION \*EPC RATING B \*COUNCIL TAX BAND TBC**







Residential Sales | Land & New Homes | Properties to Let | Landlords, Lettings and Management Services

braxtons.co.uk

Email: [property@braxtons.co.uk](mailto:property@braxtons.co.uk)

Tel: 01628 674234 Fax: 01628 785432

39-41 High Street, Maidenhead, Berkshire SL6 1JF



## Lower Boydon Road

Approximate Gross Internal Area 97.87 sq m / 1053.46 sq ft

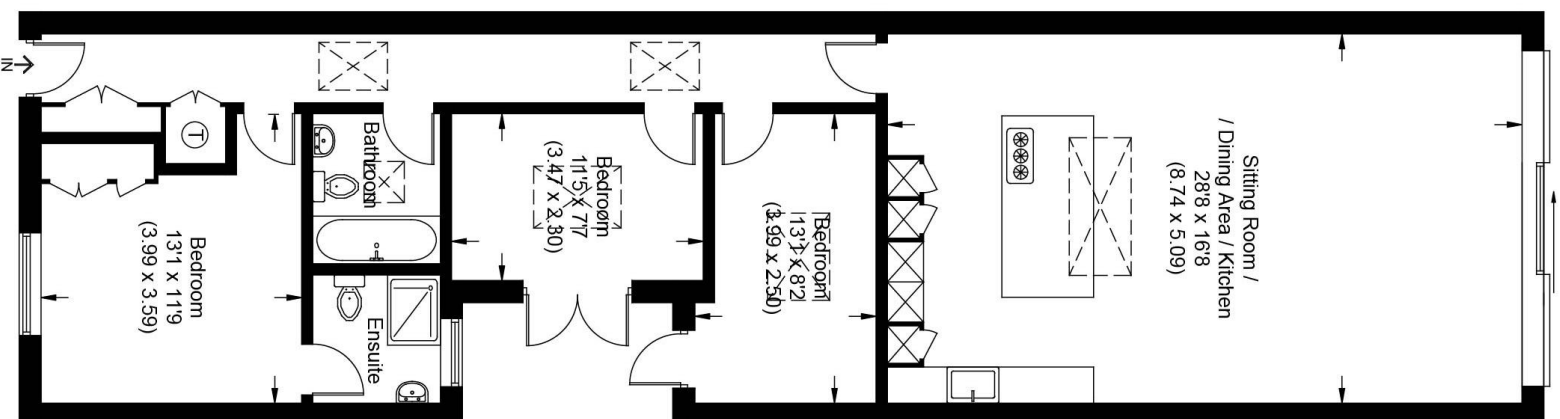


Illustration for identification purposes only,  
measurements are approximate, not to scale.

