

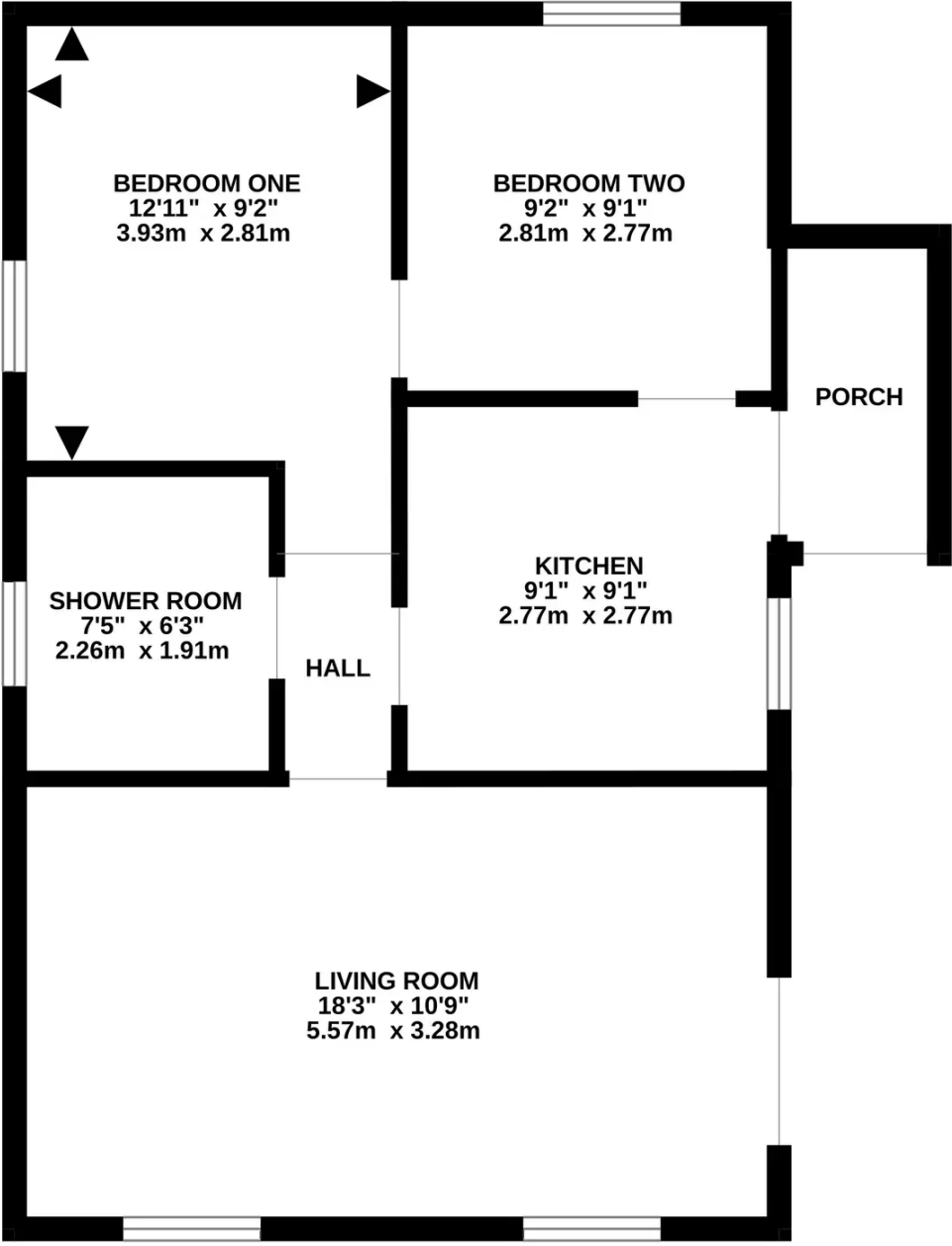


21 Drapers Copse, Southampton – SO45 5TQ

£169,999

Presented for sale in the ever popular Drapers Copse development, is this double unit mobile home. Benefitting from two double bedrooms, refitted kitchen, modern shower room and sizeable living room. The outside wrap around garden has a sunny aspect and off road parking. This property is now available with no onward chain. Double glazing and LPG central heating throughout.

GROUND FLOOR
560 sq.ft. (52.1 sq.m.) approx.



TOTAL FLOOR AREA : 560 sq.ft. (52.1 sq.m.) approx.

Whilst every attempt has been made to ensure the accuracy of the floorplan contained here, measurements of doors, windows, rooms and any other items are approximate and no responsibility is taken for any error, omission or mis-statement. This plan is for illustrative purposes only and should be used as such by any prospective purchaser. The services, systems and appliances shown have not been tested and no guarantee as to their operability or efficiency can be given.

Made with Metropix ©2023

You can include any text here. The text can be modified upon generating your brochure.