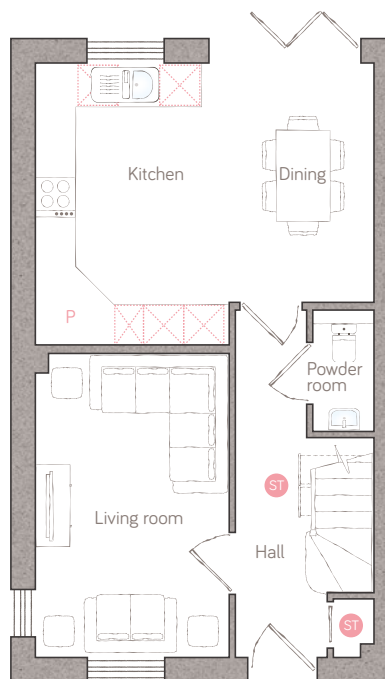




poppy cottage

CRAFT COLLECTION • 3 BED, 2 BATH

A pretty 3-bedroom semi-detached home with wow-appeal! Bi-fold doors onto the garden from the open plan kitchen/diner make this room ideal for entertaining. It's got great storage where you need it – a built-in hallway cupboard and space-saving understairs pull-outs. There's even an ensuite in the master bedroom.

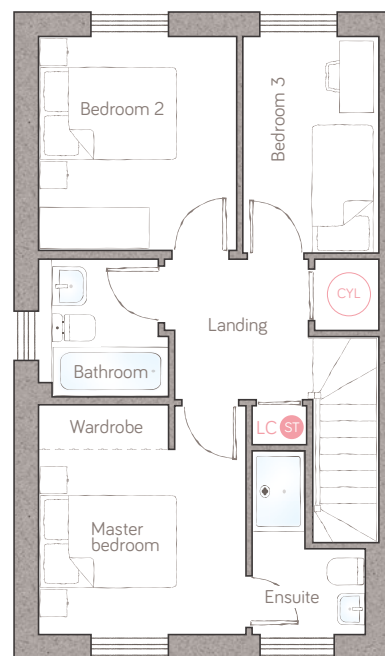


ground floor

living room 2.85m x 4.46m (9' 4" x 14' 7")

powder room 0.90m x 1.70m (2' 11" x 5' 6")

kitchen/dining 4.98m x 4.14m max (16' 4" x 13' 7" max)



first floor

master bedroom 3.03m x 3.35m (9' 11" x 11' 0")

bedroom 2 2.89m x 3.12m (9' 6" x 10' 2")

ensuite 1.66m x 2.67m max (5' 5" x 8' 9" max)

bedroom 3 2.00m x 3.16m (6' 6" x 10' 4")

bathroom 1.90m x 2.02m (6' 2" x 6' 7")

ST Storage P Pantry LC Linen closet A Appliance AH Air source heat cylinder

Plot 168 as shown. Plot 169 is handed.

For illustrative purposes only. Specifications & layouts may be subject to change.

bunnyhomes

Old Callywith Road, Bodmin, Cornwall PL31 2GT
bunnyhomes.com 01208 244971