

Love Homes



Arthur Street, Ampthill, Bedfordshire MK45 2QQ

This well-maintained residence seamlessly combines original period features with modern upgrades, offering a traditional layout spread over two levels. The ground floor boasts a dual aspect living room featuring modern sash windows with shutter blinds and an ornate cast iron open fireplace, and an impressive 22-foot re-fitted open plan kitchen/dining room. Conveniently located on the ground floor is a stylish re-fitted bathroom with under-floor heating. On the first floor there are three generously proportioned bedrooms and a shower-room with stylish white metro-block tiling and modern fixtures. Further benefits include double glazed windows throughout and gas to radiator central heating.



This property is presented by Duncan Stead - a Love Homes property expert with over 25 years' experience.

Find out more about this property by scanning the QR code.



2.2m



3



2



2

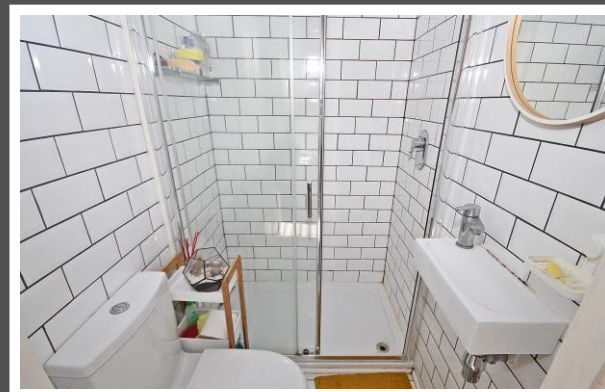
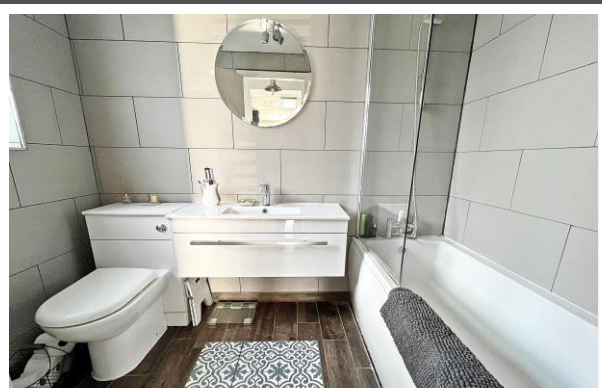
Tenure: Freehold

Council Tax: D

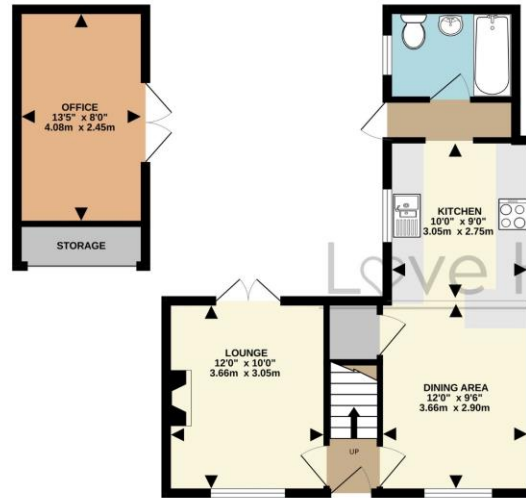




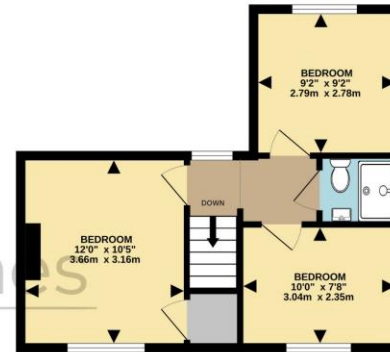
"If it wasn't for two growing teenagers I would probably stay here forever! We've loved living here, the location alone is just fantastic, schools, parks, shops restaurants and pubs - everything is just a short walk and easily accessible. We like the traditional/contemporary look so when we've decorated and updated the kitchens and bathrooms we've always tried to keep that balance. The living room is really cosy especially when the fire is lit and the garage conversion has offered such versatile additional space when working from home or when guests come to stay."



GROUND FLOOR  
554 sq.ft. (51.5 sq.m.) approx.



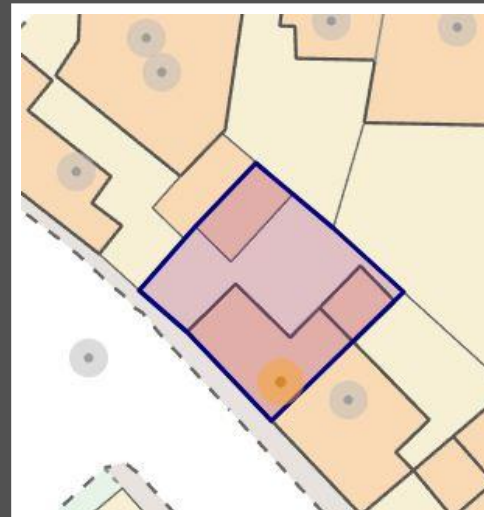
1ST FLOOR  
364 sq.ft. (33.8 sq.m.) approx.



TOTAL FLOOR AREA: 918 sq.ft. (85.3 sq.m.) approx.

Drawn by Love Homes for illustrative purposes only. Measurements and areas shown are approximate.  
Made with Metropix ©2023

Score	Energy rating	Current	Potential
92+	A		
81-91	B		88 B
69-80	C		
55-68	D	63 D	
39-54	E		
21-38	F		
1-20	G		



These particulars are set out as a general outline in accordance with the Property Misdescriptions Act (1991) only for the guidance of intending purchasers or lessees, and do not constitute any part of an offer or contract. Details are given without any responsibility, and any intending purchasers, lessees or third parties should not rely on them as statements or representations of fact but must satisfy themselves by inspection or otherwise as to the correctness of each of them. We have not carried out a structural survey and the services, appliances and specific fittings have not been tested. All photographs, measurements, floor plans and distances referred to are given as a guide only and should not be relied upon for the purchase of carpets or any other fixtures or fittings. Gardens, roof terraces, balconies and communal gardens as well as tenure and lease details cannot have their accuracy guaranteed for intending purchasers. Lease details, service ground rent (where applicable) are given as a guide only and should be checked and confirmed by your solicitor prior to exchange of contracts. No person in the employment of Love Homes has any authority to make any representation or warranty whatever in relation to this property. Purchase prices, rents or other prices quoted are correct at the date of publication and, unless otherwise stated, are exclusive of VAT. We retain the copyright in all advertising material used to market this Property. All information is as advised by the seller and subject to change. Council tax bands can be subject to change by the local council.

5 The Russell Centre, Coniston Road, Flitwick, MK45 1QY  
Tel: 01525 713111

Email: [flitwick@lovehomes.uk](mailto:flitwick@lovehomes.uk)

[www.lovehomes.uk](http://www.lovehomes.uk)



**Love Homes**