



Eaton Mews, Greenfield, Bedfordshire MK45 5FB

This truly stunning cottage-style family home is nestled within a secluded cul-de-sac, part of an exclusive small development in the highly sought-after Bedfordshire village. Built in 2009, this property offers a perfect blend of modern living and classic charm. This home is truly versatile catering to families, professional couples, or those looking to downsize. With its peaceful location, easy access to open countryside and proximity to the village school, it offers an ideal setting for modern day living in a picturesque village environment.

Don't miss the opportunity to make this delightful property your new home.



This property is presented by Duncan Stead - a Love Homes property expert with over 25 years' experience.

Find out more about this property by scanning the QR code.



1.3m



3



2



2

Tenure: Freehold

Council Tax: D

Flitwick & Ampthill 01525 713111



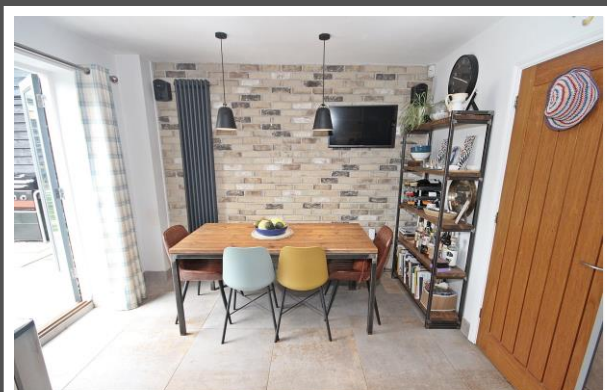
Barton-le-Clay and Luton 01582 882440



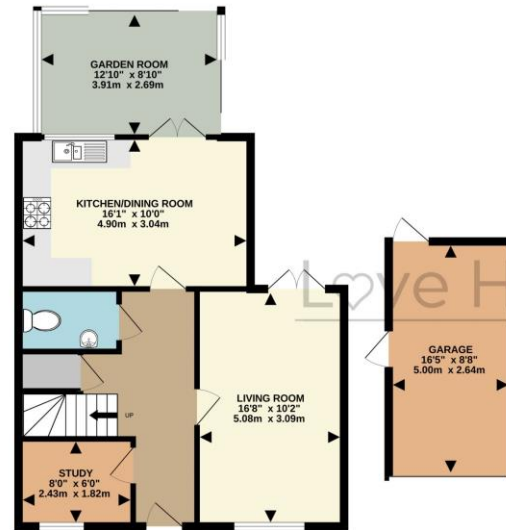
Biggleswade & Sandy 01767 669222



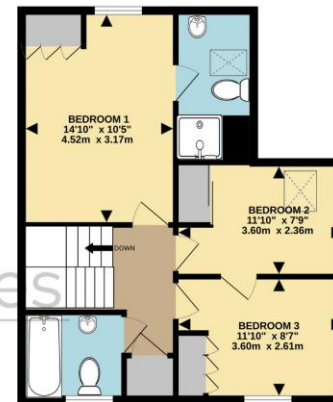
"We have loved living in Eaton Mews which is a small private road in Greenfield. The six houses in the mews have young families, professionals and older couples and is always a sociable safe, friendly place to live. In our time here we have improved and upgraded the accommodation and garden to the highest standards, so that there is always a comfortable space to sit and relax. We have great countryside on our doorstep in every direction, with riverside walks to Flitwick and Flitton Moors and over to Pulloxhill and to Centenary Wood. The village hall, park and football pitches also offer additional facilities. There is a well-regarded lower school just around the corner from the house. We have four dining pubs in walking distance, one less than a minute away. Further afield the towns of Ampthill and Flitwick have a wide range of independent shops as well as the larger supermarkets. Combined all of this with great transport links Eaton Mews is truly a great place to live."



GROUND FLOOR
804 sq.ft. (74.7 sq.m.) approx.



1ST FLOOR
542 sq.ft. (50.4 sq.m.) approx.



TOTAL FLOOR AREA: 1346 sq.ft. (125.1 sq.m.) approx.
Drawn by Love Homes for illustrative purposes only. Measurements and areas shown are approximate.
Made with Metrepro ©2023

Score	Energy rating	Current	Potential
92+	A		
81-91	B		89 B
69-80	C	76 C	
55-68	D		
39-54	E		
21-38	F		
1-20	G		



These particulars are set out as a general outline in accordance with the Property Misdescriptions Act (1991) only for the guidance of intending purchasers or lessees, and do not constitute any part of an offer or contract. Details are given without any responsibility, and any intending purchasers, lessees or third parties should not rely on them as statements or representations of fact but must satisfy themselves by inspection or otherwise as to the correctness of each of them. We have not carried out a structural survey and the services, appliances and specific fittings have not been tested. All photographs, measurements, floor plans and distances referred to are given as a guide only and should not be relied upon for the purchase of carpets or any other fixtures or fittings. Gardens, roof terraces, balconies and communal gardens as well as tenure and lease details cannot have their accuracy guaranteed for intending purchasers. Lease details, service ground rent (where applicable) are given as a guide only and should be checked and confirmed by your solicitor prior to exchange of contracts. No person in the employment of Love Homes has any authority to make any representation or warranty whatever in relation to this property. Purchase prices, rents or other prices quoted are correct at the date of publication and, unless otherwise stated, are exclusive of VAT. We retain the copyright in all advertising material used to market this Property. All information is as advised by the seller and subject to change. Council tax bands can be subject to change by the local council.

5 The Russell Centre, Coniston Road, Flitwick, MK45 1QY
Tel: 01525 713111

Email: flitwick@lovehomes.uk

www.lovehomes.uk



Love Homes