



## Epping Way

, London, E4 7PG

**Offers over £570,000**



RECENTLY REFURBISHED! Howse-group are delighted to present to market this beautifully designed terraced property, Located in sought after North Chingford, In the catchment area of Yardley lane school (excellent ofsted rated) the property is ideally situated. Boasting many features which includes; gas central heating and double glazing. On the ground floor a large open plan kitchen/diner with bifold doors to rear garden and cloakroom. To the first floor two double bedrooms and bathroom. On the second floor the loft converted master bedroom with en-suite. Externally to the rear a 50ft approx. garden with garage/outbuilding and to the front off street parking.

Call now to arrange a viewing  
0208 087 3122

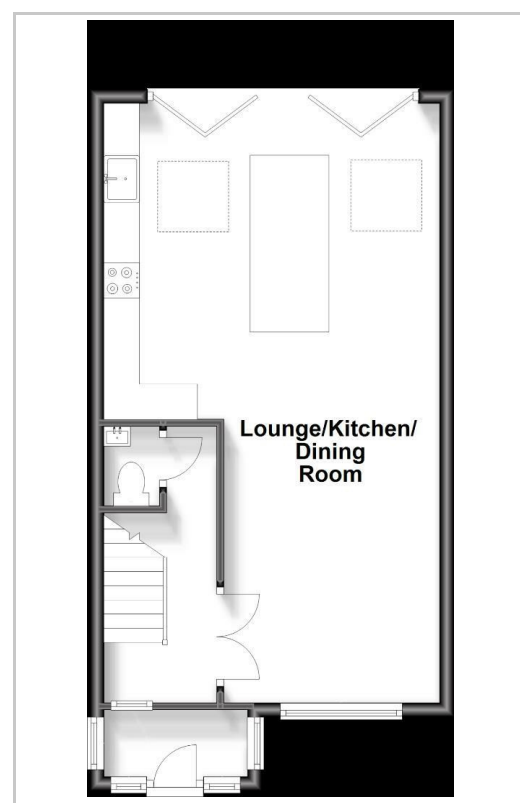


- ENTRANCE HALL
- CLOAKROOM
- KITCHEN DINER
- BEDROOM 1
- EN SUITE
- BEDROOM 2
- BEDROOM 3
- BATHROOM
- GARDEN
- GARAGE

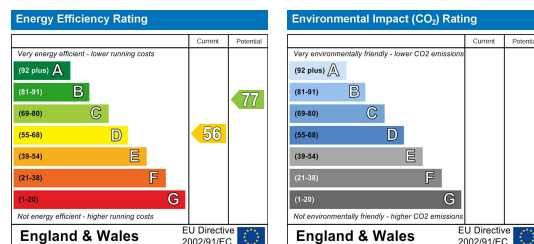
## Area Map



## Floor Plans



## Energy Efficiency Graph



These particulars, whilst believed to be accurate are set out as a general outline only for guidance and do not constitute any part of an offer or contract. Intending purchasers should not rely on them as statements of representation of fact, but must satisfy themselves by inspection or otherwise as to their accuracy. No person in this firm's employment has the authority to make or give any representation or warranty in respect of the property.