



Anstey Road, Bournemouth, Dorset

2 1 1

Asking Price £300,000



Corbin & Co are delighted to offer for sale this well presented semi-detached home which offers modern family living with the benefit of having a sizable rear garden and off road parking to the front.

Positioned on a quiet residential street in a popular location in BH11, close to local shops, supermarkets, excellent transport links & bus services, and schools for all ages.

Upon entering into this prized property a hallway leads to all of the ground floor accommodation with stairs rising up to the first floor and a useful under stair storage cupboard.

The lounge/diner is spacious and sun filled with dual aspect windows to the front and French doors leading out to the rear garden.

The kitchen is at the heart of this home and is a nice sized square shaped room. Fitted with a range of matching storage cupboards and plenty of worktops and space for appliances. The sink is where it should be with views out from the window over the garden. From the kitchen an opening leads through to an additional room which currently is used as a utility space, uPVC doors lead to both the front and rear gardens.





Upstairs are two well appointed, generously sized double bedrooms one to the front and the other to the rear aspect overlooking the garden. These are serviced by a convenient bathroom ,and there is also the advantage of a separate WC with additional hand wash basin.

The front garden is hard landscaped for ease of maintenance and provides off road parking for up number of vehicles.

One of the highlights is the vast rear garden which is family sized with copious amounts of outdoor space. A patio area abuts the rear of the property with the remainder laid to lawn and timber fences surrounding.

This beautiful property has something for everyone and has to be viewed to be appreciated. To book an appointment please call us on 01202 519761.





Corbin
& Co.



Corbin
& Co.

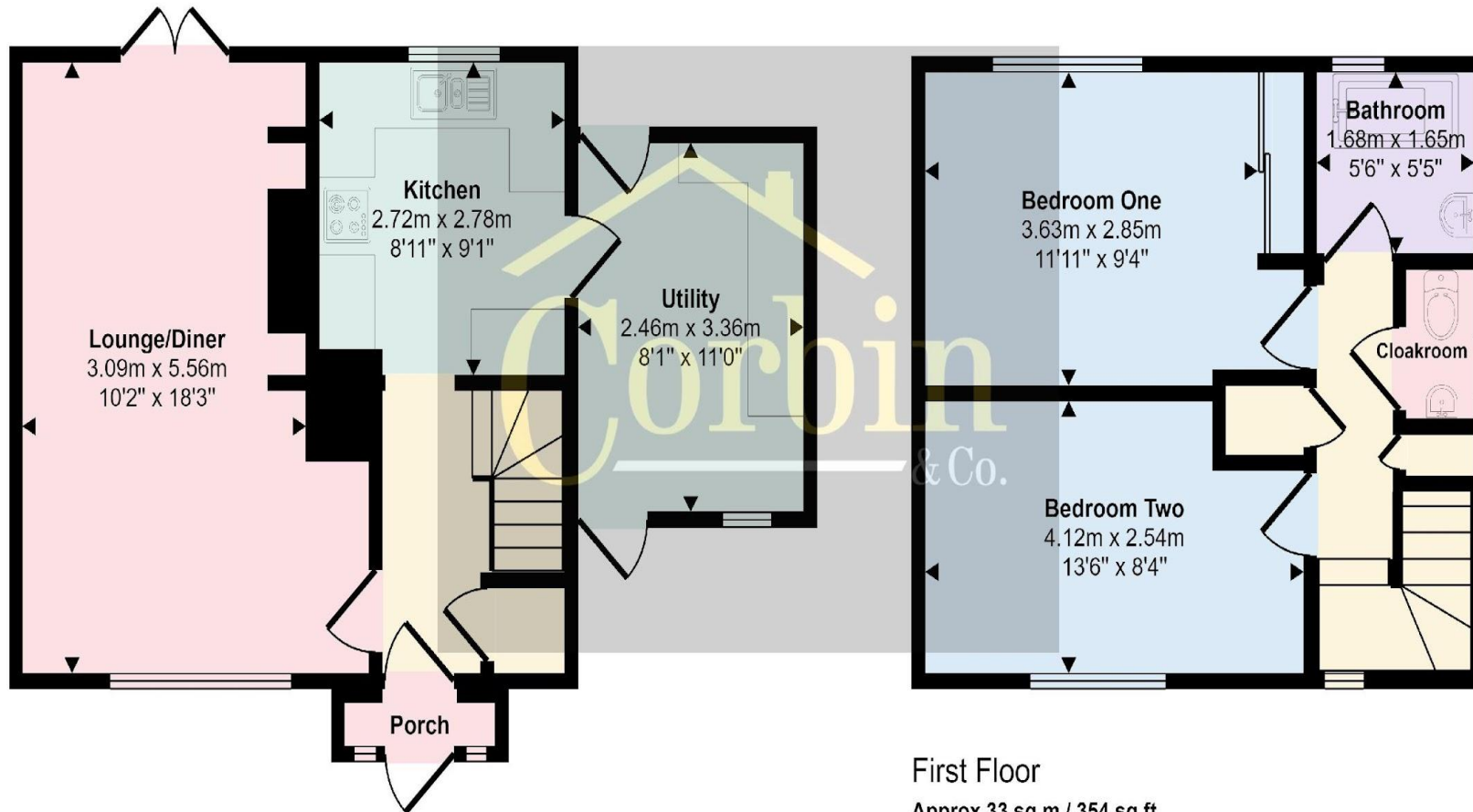


Corbin
& Co.



Corbin
& Co.

Approx Gross Internal Area
76 sq m / 815 sq ft



Ground Floor
Approx 43 sq m / 461 sq ft

First Floor
Approx 33 sq m / 354 sq ft

This floorplan is only for illustrative purposes and is not to scale. Measurements of rooms, doors, windows, and any items are approximate and no responsibility is taken for any error, omission or mis-statement. Icons of items such as bathroom suites are representations only and may not look like the real items. Made with Made Snappy 360.