



Goldcrest Avenue, Farington Moss

PR26 6AP



£1,150 pcm



Three-bedroom, three storey semi-detached property with three bathrooms, rear garden and close to all local amenities and transport links. Available to let now.

To the front the spacious lounge offers a warm welcome and plenty of space to be comfortable and relax. To the rear the kitchen diner has a range of wall and base units with complementary work surfaces and a range of fitted appliances including gas hob with extractor over, electric oven and grill, dishwasher, fridge and freezer. Patio doors open out on to the garden which is mainly laid to lawn with patio areas.

To the first floor are bedroom two and three and the elegant family bathroom with tiled flooring and elevations, panelled bath with shower over, soft close wc and wash hand basin. Leading to the second floor is a great landing space which is currently used as an office. Up the stairs is the fantastic master bedroom with built in wardrobe space and en-suite containing separate shower enclosure.

The attention to detail and quality on this property is clearly evident with fully programmable gas central heating system, energy saving double glazing, fully fitted alarm system, outdoor car charging socket, LED low energy light and high performance insulation.



The property requires a deposit of £1326, including holding deposit of £265. The Zero Deposit Scheme is also available.

Council Tax Band: C

EPC Rating: B

- Three bedrooms
- New build development
- Large private garden
- Zero Deposit Scheme Available
- Available now
- Excellent transport links



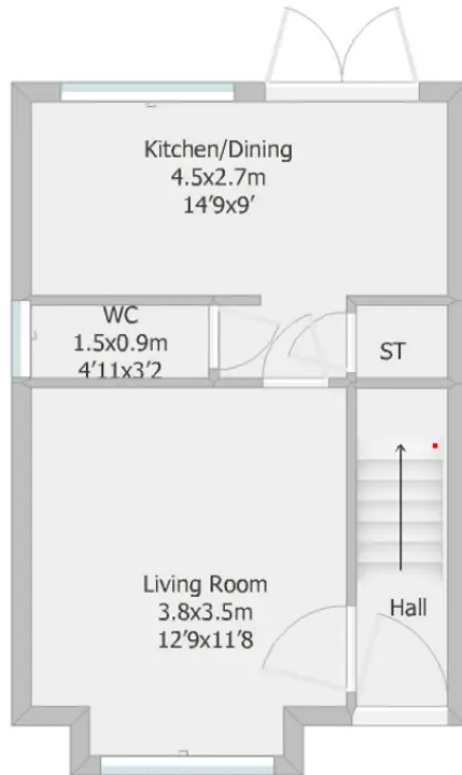
Eccleston Branch
265 The Green, Eccleston, PR7 5TF
01257 451673

Coppull Branch
244 Spendmore Lane, Coppull, PR7 5DE
01257 794588

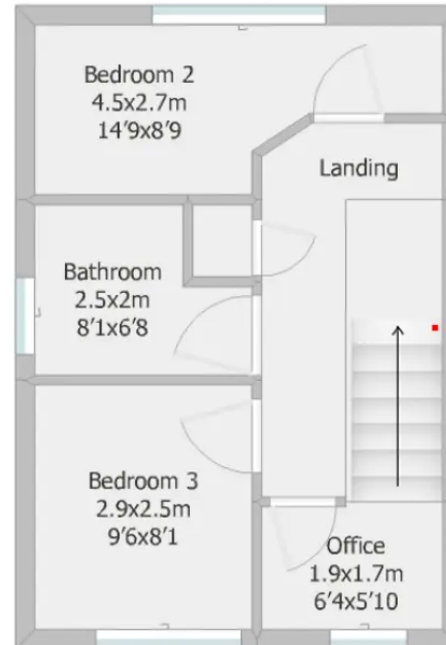
www.hometruthslancs.co.uk
office@hometruthslancs.co.uk



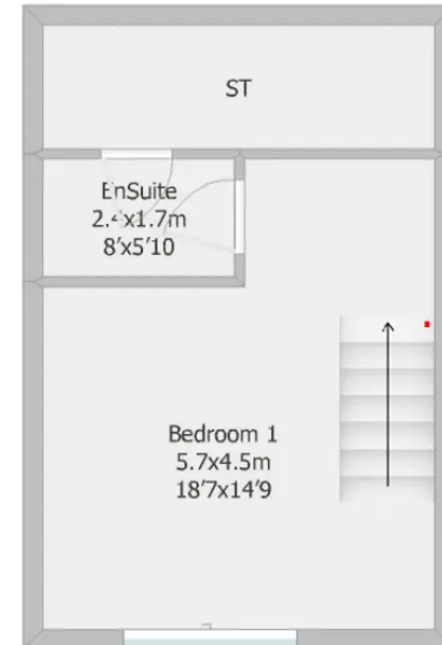
Ground Floor
29 sq m (approx)
312.2 sq f (approx)



First Floor
27.5 sq m (approx)
296 sq f (approx)



Second Floor
62.4 sq m (approx)
671.7 sq f (approx)



Drawing is for illustrative purposes only and is not to scale.
Drawn using RoomSketch.