

Snipewood, Ecclestone

PR7 5RQ



£295,000



Gorgeous semi detached property with three bedrooms, beautiful garden and almost 1300 square feet of versatile and sumptuous accommodation. Within easy reach of amenities, excellent schools and countryside walks on the doorstep this is a delightful home. The Indian stone driveway can accommodate at least two vehicles and leads to the main entrance. Step inside to the main entrance with cloak area and travertine tiled flooring that runs through much of the ground floor. The cloakroom has wc and floating wash hand basin. To the rear, the heart of the house combined the living room with vaulted ceiling and patio doors opening to the garden and the stylish kitchen comprising a range of wall and base units with granite work surfaces including circular breakfast bar and etched drainer, five burner range cooker, dishwasher, washing machine, wine cooler and space, power and plumbing for an American style refrigerator. A separate reception room makes an excellent place for formal dining and benefits from solid wood flooring and patio doors opening to a private terrace. Step outside into the delightful garden with Indian stone terrace, raised deck with porcelain tiles, beautiful cottage garden planting, water feature and raised beds with seating, and, if you don't want to sit outside the garden room is the perfect place to relax and entertain and, having power and light, also makes an excellent studio or home office. Two of the bedrooms are to the front with bedroom three currently used as a home office and bedroom one a lovely spacious room with fitted wardrobes. Bedroom two is on the first floor with natural light from Velux windows and benefits from en suite.

Gorgeous semi detached property with three bedrooms, beautiful cottage garden and almost 1300 square feet of versatile and sumptuous accommodation. Within easy reach of village amenities, excellent schools and countryside walks on the doorstep this is a delightful home.

Council Tax band: C

Tenure: Freehold

- Beautiful semi detached property
- Three bedrooms
- Wonderful family room
- Gorgeous bathrooms
- Cul de sac location
- Countryside walks on the doorstep



Eccleston Branch

265 The Green, Eccleston, PR7 5TF
01257 451673

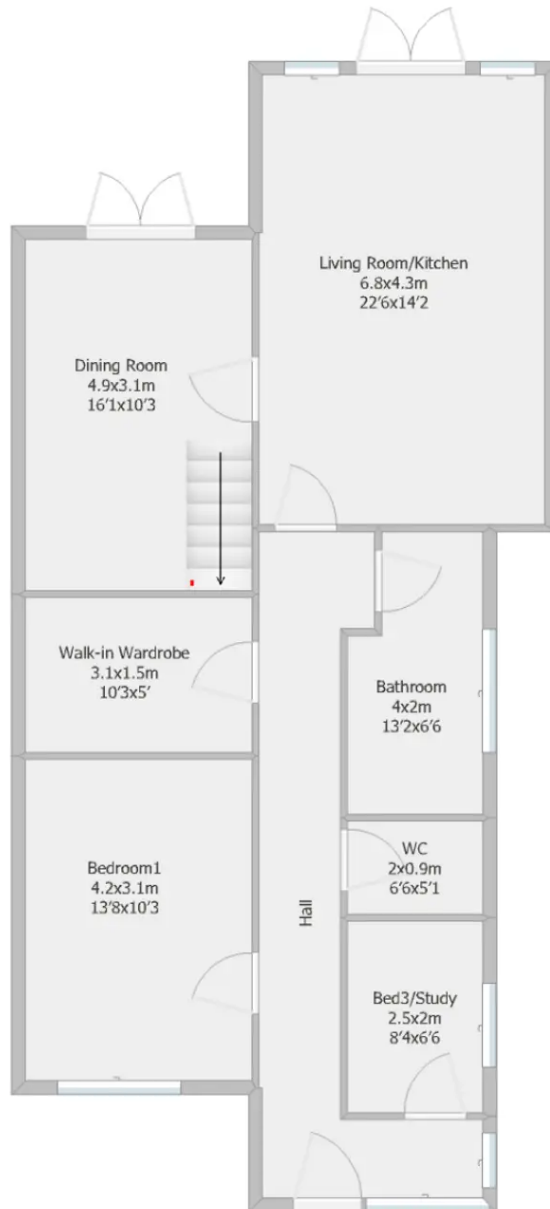
Coppull Branch

244 Spendmore Lane, Coppull, PR7 5DE
01257 794588

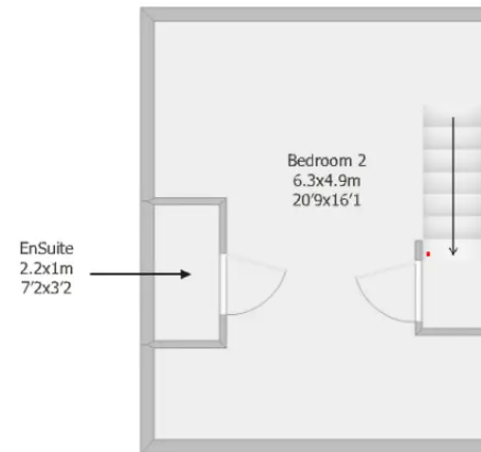
www.hometruthslancs.co.uk
office@hometruthslancs.co.uk



Ground Floor
86.1 sq m (approx)
926.8 sq ft (approx)



First Floor
33.6 sq m (approx)
361.7 sq f (approx)



Drawing not to scale and is for illustrative purposes only.
Plan produced by RoomSketcher.