



## Foxwood Cottage, 14 London Road, Tetbury, GL8 8JL

**£1,000 pcm**

A traditional Cotswold stone period cottage located in the very heart of the town with light and airy, well-presented accommodation.

## The Property

**DESCRIPTION** Foxwood Cottage is a traditional stone period cottage centrally located in the Cotswold market town of Tetbury. The cottage is tastefully presented with a modern extension complementing the charming character boasting cosy aesthetics and a town centre position. Whilst displaying this quintessential cottage style, the accommodation notably features high vaulted ceilings across the whole first floor and the dining area. The accommodation extends in all to 663 sq.ft.

The ground floor layout includes a front living room with fireplace, whilst to the rear there is an extended open plan kitchen/dining room filled with light through patio doors and skylights. On the first floor, there are two double bedrooms and a bathroom with shower over the bath. The rear garden is laid for easy maintenance with a patio terrace and steps up to an artificial lawn bound by planted borders. Within the garden there is a stone built store. Unrestricted on-street parking is available on London Road and there is whole range of amenities just a moments walk from the front door.

**LOCATION** Tetbury is a thriving and historic market town situated within an Area of Outstanding Natural Beauty surrounded by delightful Cotswold Countryside. The town centre offers a broad range of shops and amenities for everyday needs as well as a number of quality antique

shops, excellent hotels, restaurants and cafes. Further everyday needs include a large supermarket, hospital, surgeries and post office whilst there are also excellent schools catering for all ages.

Conveniently located less than half an hour from both the M4 and M5 motorway, there is good access to nearby Kemble Railway Station which provides regular fast services to London and other regional centres.

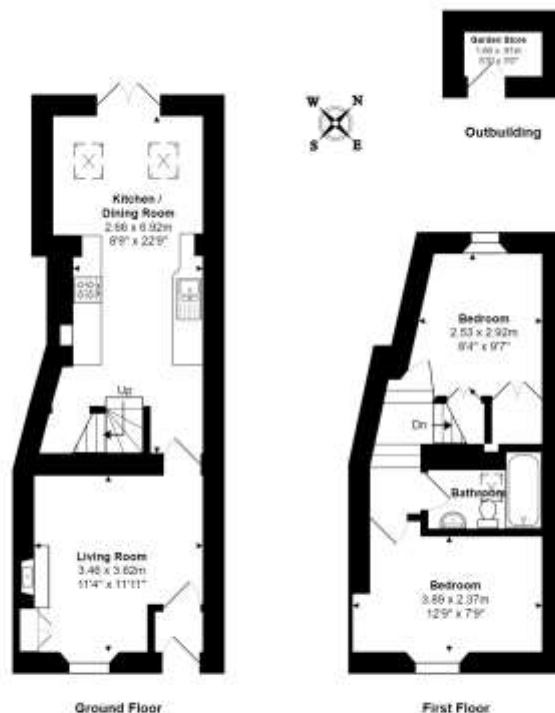
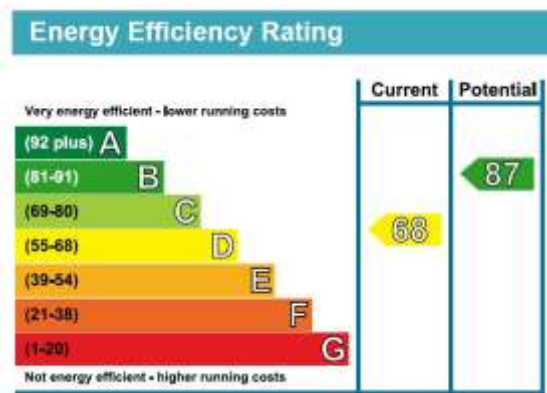
### Directions

From Tetbury Market Place, follow Long Street and as the road bends to the right into London Road, locate the property shortly afterwards on the left hand side. Sat nav postcode GL8 8JL

### Local Authority

Cotswold District Council

**Council Tax A** £1,413



Total Area: 61.6 m<sup>2</sup> ... 663 ft<sup>2</sup> (excluding garden store)

All measurements are approximate and for display purposes only