



220 Main Street, East Calder

Offers Over £155,000



220 Main Street

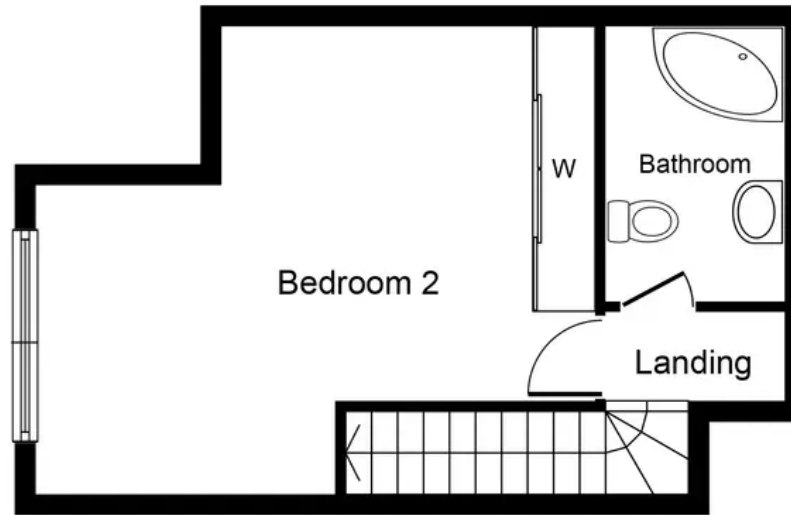
East Calder, Livingston

Charming village maisonette with spacious lounge, breakfasting kitchen, extensive storage, and elevated terrace providing breathtaking views. Communal garden, external out-house, and excellent commuter links. A true gem for those seeking a serene yet convenient home.

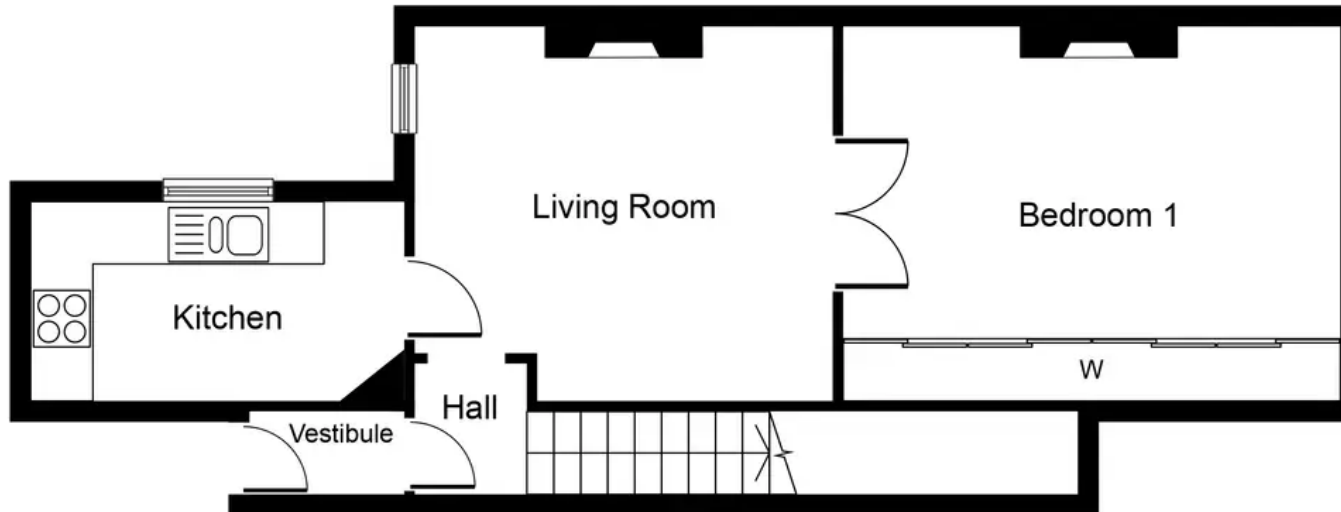
Tenure: Freehold

- Fabulously spacious Two Double Bedroom Maisonette
- Breakfasting Kitchen
- Well proportioned Lounge
- Extensive storage throughout
- Elevated external Terrace providing breath-taking views
- Lovely Village Location with excellent commuter links





Attic Floor
Approximate Floor Area
312 sq.ft.
(29.0 sq.m.)



First Floor
Approximate Floor Area
500 sq.ft.
(46.5 sq.m.)

Whilst every attempt has been made to ensure the accuracy of the floor plan contained here, measurements of doors, windows, rooms and any other items are approximate and no responsibility is taken for any error, omission, or mis-statement. The measurements should not be relied upon for valuation, transaction and/or funding purposes. This plan is for illustrative purposes only and should be used as such by any prospective purchaser or tenant.

The services, systems and appliances shown have not been tested and no guarantee as to their operability or efficiency can be given.



KnightBain Estate Agents

Knightbain, 4 Greendykes Road, Broxburn - EH52 5AG

01506 852000

info@knightbain.co.uk

www.knightbain.co.uk/

