



LAWRENCE RAND

15 Roundways, Ruislip

Guide Price **£700,000**

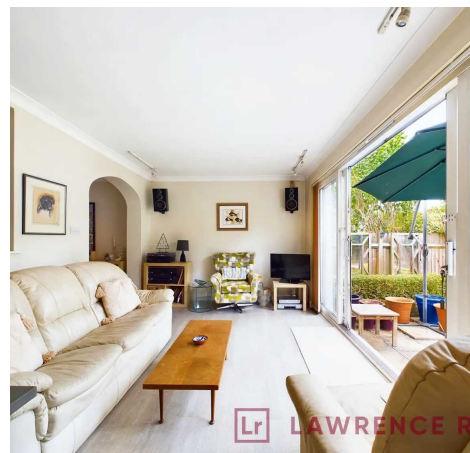
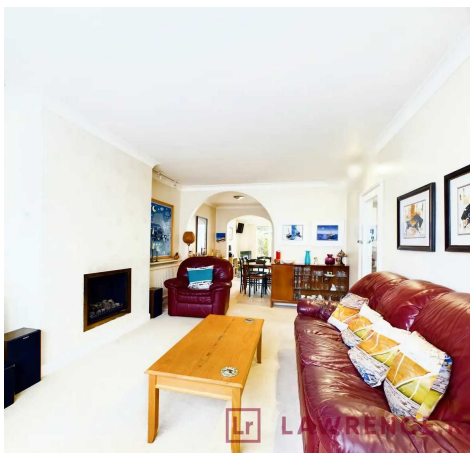


15 Roundways

Ruislip, Ruislip

Spacious four-bed semi-detached house with ample interior and exterior space. Features two reception rooms, off-street parking, and a stunning garden with patio and outbuilding, perfect for relaxing or entertaining. Ideal for a growing family or those seeking comfort and style.

- Semi Detached House
- Four Bedrooms
- Two Reception Rooms
- Off Street Parking
- Guest WC
- Utility Room
- Generous Garden
- Outbuilding/Office

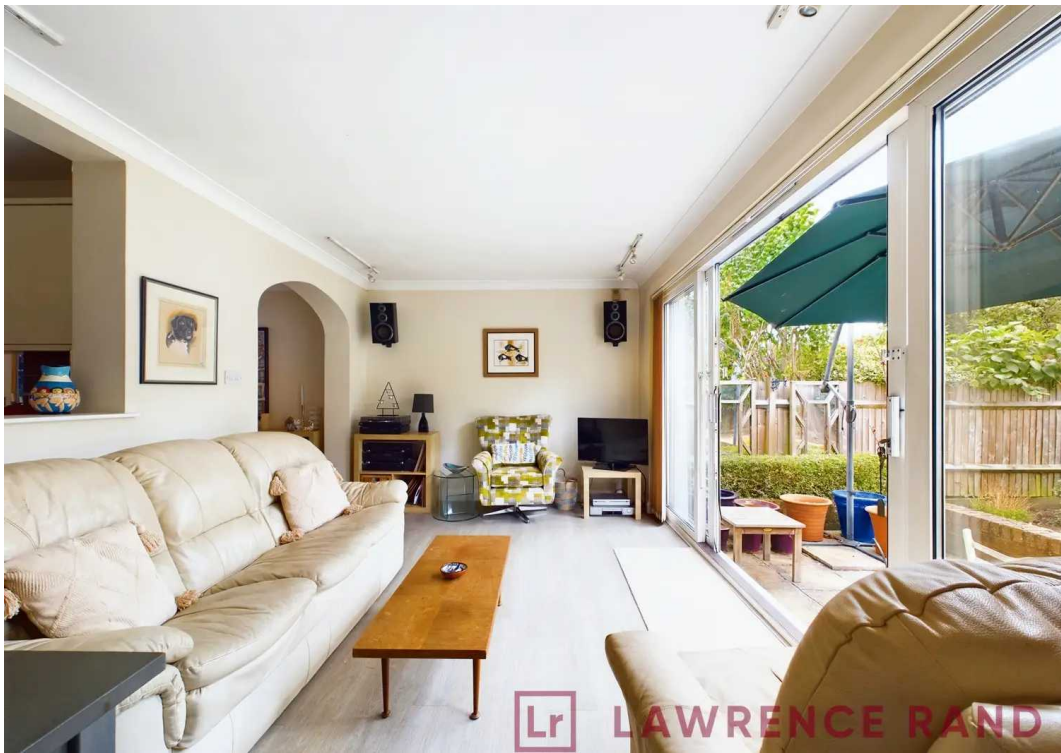




Lr LAWRENCE RAND



Lr LAWRENCE RAND



Lr LAWRENCE RAND



Lr LAWRENCE RAND



Ground Floor Building 1



Floor 1 Building 1



Ground Floor Building 2

Approximate total area⁽¹⁾

1193.07 ft²

110.84 m²

(1) Excluding balconies and terraces

While every attempt has been made to ensure accuracy, all measurements are approximate, not to scale. This floor plan is for illustrative purposes only.

GIRAFFE 360



Lawrence Rand

Lawrence Rand, 106 Victoria Road - HA4 0AL

01895 632211

Info@lawrence-rand.co.uk

www.lawrence-rand.co.uk/



LAWRENCE RAND