



Loose Road, Maidstone

£275,000



Loose Road

Maidstone

Charming 2-bed terraced property in popular village. Well-presented interior, cellar, and inviting outdoor space. Lounge, spacious kitchen, downstairs bathroom. 2 double bedrooms. Versatile cellar. Delightful rear garden. Local amenities. Arrange a viewing now!

Council Tax band: B

Tenure: Freehold

EPC Energy Efficiency Rating: D

EPC Environmental Impact Rating: D

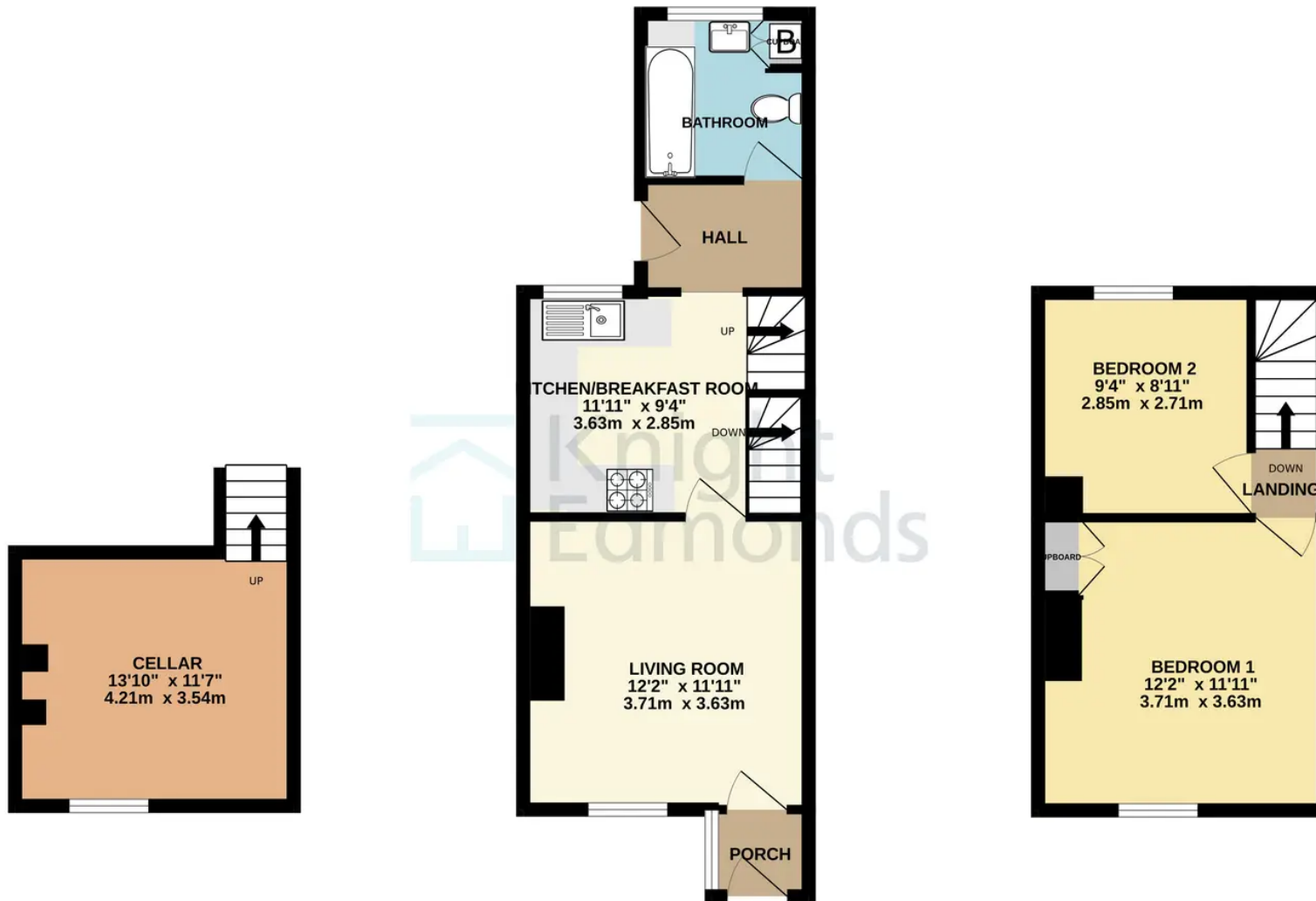
- Well Presented Throughout
- Popular Loose Location
- Nearby Secondary Schools & Ofsted Rated "Good" Loose Primary School
- Fantastic Transport Links & Amenities Nearby
- Downstairs Bathroom



BASEMENT
130 sq.ft. (12.1 sq.m.) approx.

GROUND FLOOR
346 sq.ft. (32.2 sq.m.) approx.

1ST FLOOR
248 sq.ft. (23.1 sq.m.) approx.



Scan to
view
online!



Scan to
book a
viewing!



TOTAL FLOOR AREA : 725 sq.ft. (67.3 sq.m.) approx.

Whilst every attempt has been made to ensure the accuracy of the floorplan contained here, measurements of doors, windows, rooms and any other items are approximate and no responsibility is taken for any error, omission or mis-statement. This plan is for illustrative purposes only and should be used as such by any prospective purchaser. The services, systems and appliances shown have not been tested and no guarantee as to their operability or efficiency can be given.
Made with Metropix ©2023

