



Pyrles Lane, Loughton

Loughton

Guide Price £625,000 – £650,000



43 Pyrles Lane

Loughton, Loughton

Stylish 3 bed semi-detached house in Loughton. Modern decor throughout, open-plan kitchen/dining/family room, spacious living room, landscaped garden. Ample parking, garage, potential to extend. Close to motorways, train station, and amenities. Guide Price £625,000 - £650,000. Call 0203 937 7733.

Council Tax band: E

Tenure: Freehold

EPC Energy Efficiency Rating: C

EPC Environmental Impact Rating:

- Stylish Three Bedroom Semi Detached House
- Recently Refurbished Throughout
- Stunning Open Plan Kitchen/Dining/Family
- Bespoke Fitted Kitchen With Quarts Worktops & Breakfast Bar
- Fully Tiled Family Bathroom
- Underfloor Heating Throughout The Groundfloor
- Landscaped Rear Garden With Porcelain Tiles
- Option To Extend Subject To Planning, Close To Amenities & School Catchments



Kitchen/Dining Room

22' 1" x 18' 6" (6.73m x 5.63m)

Living Room

13' 11" x 10' 9" (4.23m x 3.28m)

Utility room

7' 0" x 6' 9" (2.13m x 2.05m)

Bedroom 1

14' 2" x 10' 9" (4.31m x 3.28m)

Bedroom 2

10' 4" x 10' 0" (3.16m x 3.06m)

Bedroom 3

7' 3" x 6' 1" (2.22m x 1.86m)

Bathroom

5' 9" x 6' 6" (1.75m x 1.97m)

WC



GARDEN

62' 4" x 19' 9" (19m x 6.02m)

GARAGE

Single Garage

ON DRIVE

2 Parking Spaces





CAPLE
estates



CAPLE
estates



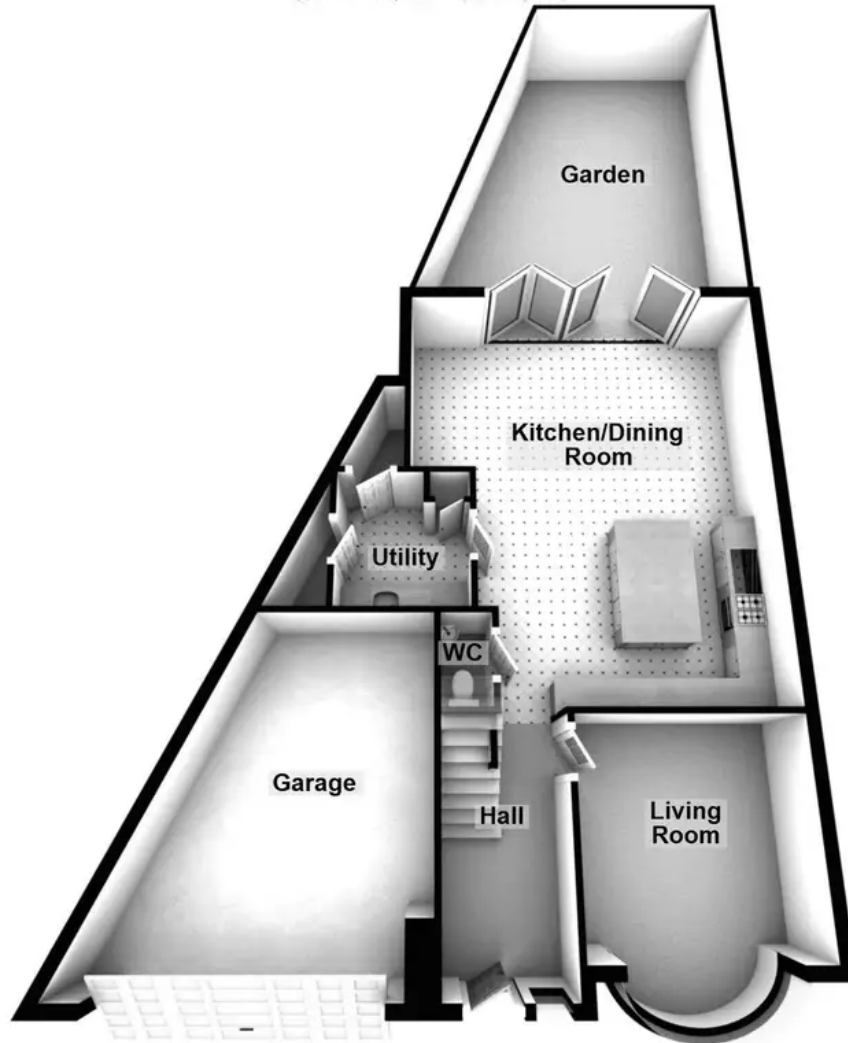
CAPLE
estates



CAPLE
estates

Ground Floor

Approx. 57.3 sq. metres (616.9 sq. feet)



First Floor

Approx. 34.0 sq. metres (365.9 sq. feet)



Main area: Approx. 91.3 sq. metres (982.8 sq. feet)
Plus garages, approx. 19.6 sq. metres (211.1 sq. feet)

You can include any text here. The text can be modified upon generating your brochure.