



## Hurst Road, Buckhurst Hill

Essex

Guide Price £750,000





## Hurst Road

Buckhurst Hill, Essex

Guide Price £750,000-£800,000. Fantastic 3 bed family home in Buckhurst Hill. Close to station, shops & Roding Valley Nature Reserve. 2 reception rooms, kitchen/breakfast room, south-facing garden. Detached garage & off-street parking. Potential to expand STPC. Call 0203 937 7733 to view.

Council Tax band: E

Tenure: Freehold

EPC Energy Efficiency Rating: C

EPC Environmental Impact Rating:

- Guide Price £750,000-£800,000
- Three Bedroom Semi Detached Family Home with Two Receptions
- Immaculate Presentation
- Kitchen/Breakfast Room
- Downstairs Cloakroom
- Delightful South Facing Garden
- Centrally Located - Walking Distance to Buckhurst Hill Station, Queens Rd & Roding Valley Nature Reserve
- Garage & Off Street Parking





### Living Room

Dimensions: 22' 7" x 10' 11" (6.88m x 3.32m).

### Kitchen/Breakfast Room

Dimensions: 16' 7" x 9' 11" (5.05m x 3.02m).

### Family Area

Dimensions: 16' 0" x 9' 11" (4.87m x 3.02m).

### Bedroom 1

Dimensions: 13' 3" x 9' 11" (4.04m x 3.02m).

### Bedroom 2

Dimensions: 12' 0" x 11' 0" (3.65m x 3.35m).

### Bedroom 3

Dimensions: 14' 11" x 7' 0" (4.54m x 2.13m).

### Bathroom

Dimensions: 6' 10" x 6' 1" (2.08m x 1.85m).







**GARDEN**


151' 3" x 119' 1" (46.1m x 36.3m)

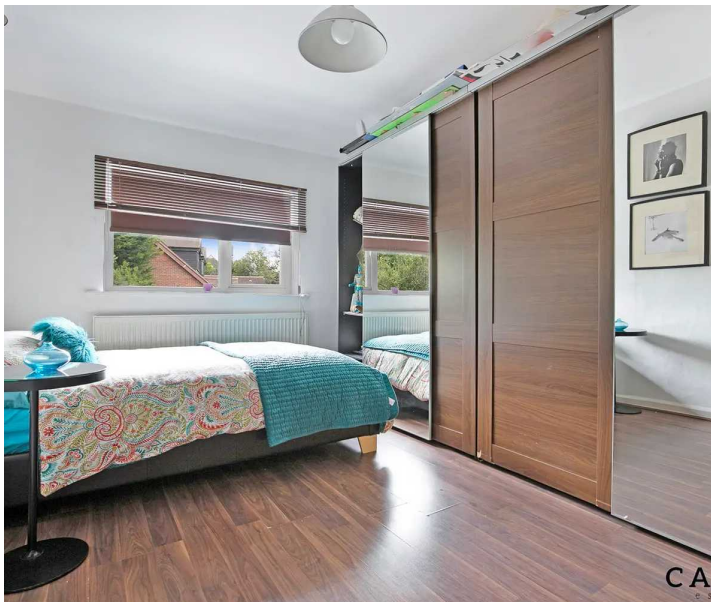
**GARAGE**

Double Garage

**ON DRIVE**

2 Parking Spaces

  
CAPLEN



CA



CA

  
**CAPLEN**  
e s t a t e s





CAPLE  
estates



CAPLE  
estates

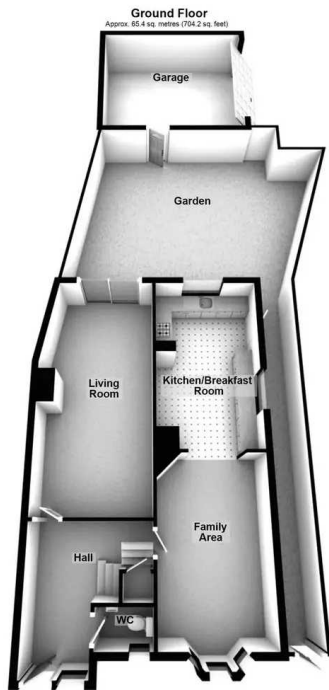


CAPLE  
estates



CAPLE  
estates



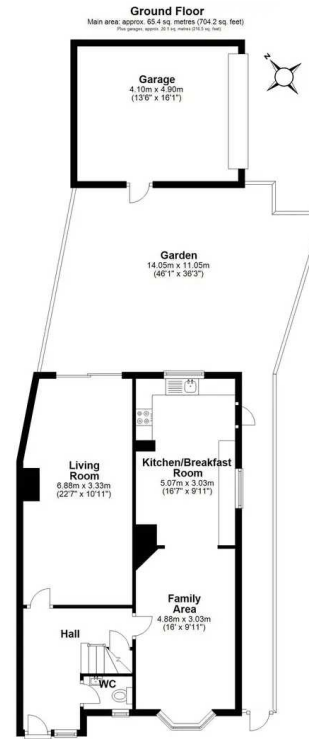


**Ground Floor**  
Approx. 65.4 sq. metres (704.2 sq. feet)



**First Floor**  
Approx. 44.2 sq. metres (475.5 sq. feet)

Total area: approx. 129.7 sq. metres (1396.2 sq. feet)



**Ground Floor**  
Main area: approx. 65.4 sq. metres (704.2 sq. feet)  
Plus garage: approx. 21.1 sq. metres (226.3 sq. feet)



**First Floor**  
Approx. 44.2 sq. metres (475.5 sq. feet)

Main area: Approx. 109.6 sq. metres (1179.8 sq. feet)  
Plus garage: approx. 20.1 sq. metres (216.3 sq. feet)

