



Magnolia Heights, 15B Manor Road, Chigwell

£595,000 | £2,395 pcm Share of Freehold

NEW BUILD APARTMENTS • SHARE OF FREEHOLD 999YRS / SERVICE CHARGE TBC • PRIVATE TERRACES & BALCONIES •
BESPOKE FITTED KITCHEN WITH INTEGRATED APPLIANCES • UNDERFLOOR HEATED HERRINGBONE OAK FLOORING
THROUGHOUT • LANDSCAPED COMMUNAL GARDENS


CAPLEN
estates





Apartment 3 Ground Floor

Caplen Estates welcomes to the market this stylish *New Build* two bedroom ground floor apartment which is situated within Magnolia Heights, Manor Road Chigwell, offering Share Of Freehold, within close proximity to transport links, Chigwell Private member Golf course and Gym facilities nearby.

This exceptional property which boasts modern features and a high specification throughout. When entering the property via secure entry system you are met by a spacious entrance hall with *walnut, oak* herringbone wood flooring which leads through in to an open plan kitchen/dining/living room. The bespoke fitted kitchen boasts ample storage, quartz worktops and integrated appliances. The open plan living space offers multiple electric point, tv/media points and doors leading to a private landscaped patio.

The main bedroom is complete with fitted wardrobe and a stylish ensuite shower room which is fully tiled. The second bedroom offers fitted wardrobes and shower room with access to a pass through w/c. Additionally the property offers a separate w/c, underfloor heating throughout, fast broadband, electric charger points, communal gardens and is available to view asap.

Lease Details - Share of Freehold. Lease Remaining - 998yrs. Service Charge Details TBC as property is a new build.

Call our Sales team on 0203 937 7733 to arrange a viewing.

Council Tax band: F

Tenure: Share of Freehold



Reception Dining Room Kitchen
18' 3" x 18' 6" (5.56m x 5.65m)

Bedroom 1
11' 4" x 14' 3" (3.45m x 4.34m)

Ensuite Shower Room

Bedroom 2
10' 2" x 9' 1" (3.10m x 2.77m)





BALCONY

7' 4" x 17' 1" (2.24m x 5.2m)

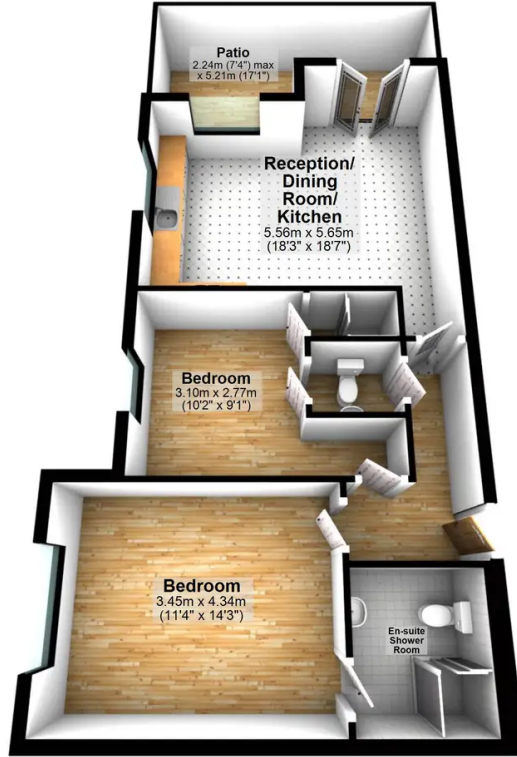
Terrace/Outdoor seating area, accessed through living area

SECURE GATED

1 Parking Space

Floor Plan

Approx. 67.1 sq. metres (722.7 sq. feet)



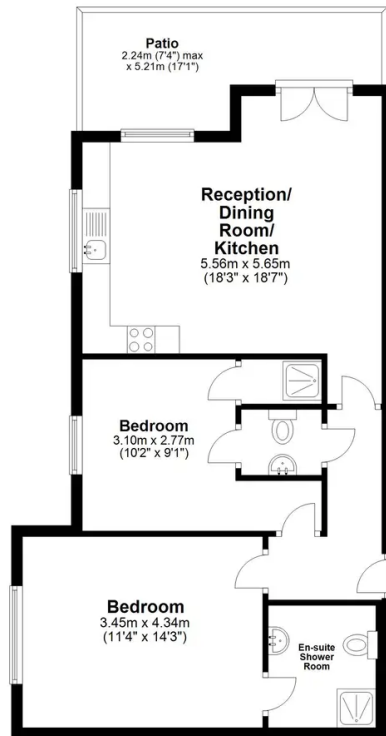
Total area: approx. 67.1 sq. metres (722.7 sq. feet)

For illustration purposes only.

www.modephoto.co.uk @modephotouk
Plan produced using PlanUp.

Floor Plan

Approx. 67.1 sq. metres (722.7 sq. feet)



Total area: approx. 67.1 sq. metres (722.7 sq. feet)

For illustration purposes only.

www.modephoto.co.uk @modephotouk
Plan produced using PlanUp.

You can include any text here. The text can be modified upon generating your brochure.