



## Magnolia Heights, Manor Road, Chigwell

Essex

£1,075,000 | £3,250 pcm



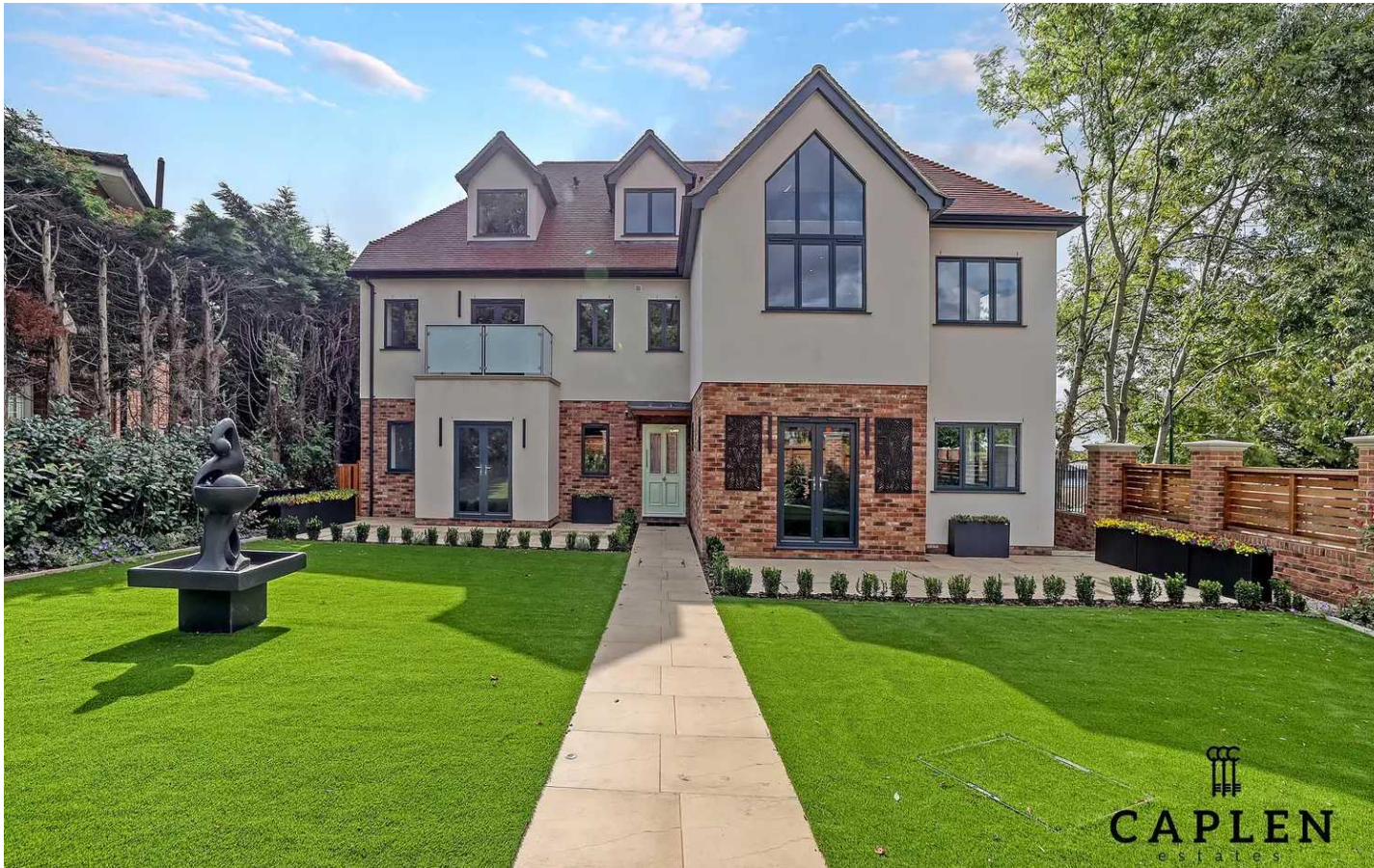
## Magnolia Heights, Manor Road

Chigwell, Essex

Stylish 2-bed ground floor apartment in Chigwell. Share of Freehold. Close to transport, golf course, and gym. Spacious open plan living with high spec kitchen. Private garden and terrace. Fitted wardrobes, ensuite, underfloor heating. Communal gardens. Viewing available. Call 0203 937 7733.

Tenure: Share of Freehold

- NEW BUILD APARTMENTS
- SHARE OF FREEHOLD 999YRS / SERVICE CHARGE TBC
- SECURE GATED DEVELOPMENT, ELECTRIC CHARGER POINTS & PARKING
- PRIVATE TERRACES & BALCONIES
- BESPOKE FITTED KITCHEN WITH INTEGRATED APPLIANCES
- UNDERFLOOR HEATED HERRINGBONE OAK FLOORING THROUGHOUT
- LANDSCAPED COMMUNAL GARDENS



**Reception Dining Room Kitchen**

24' 3" x 21' 1" (7.39m x 6.43m)

**Bedroom 1**

20' 1" x 21' 10" (6.13m x 6.65m)

**Ensuite Shower Room**

**Bedroom 2**

17' 0" x 11' 9" (5.18m x 3.58m)

**Ensuite Shower Room**

**WC**

  
**CAPLEN**  
estates

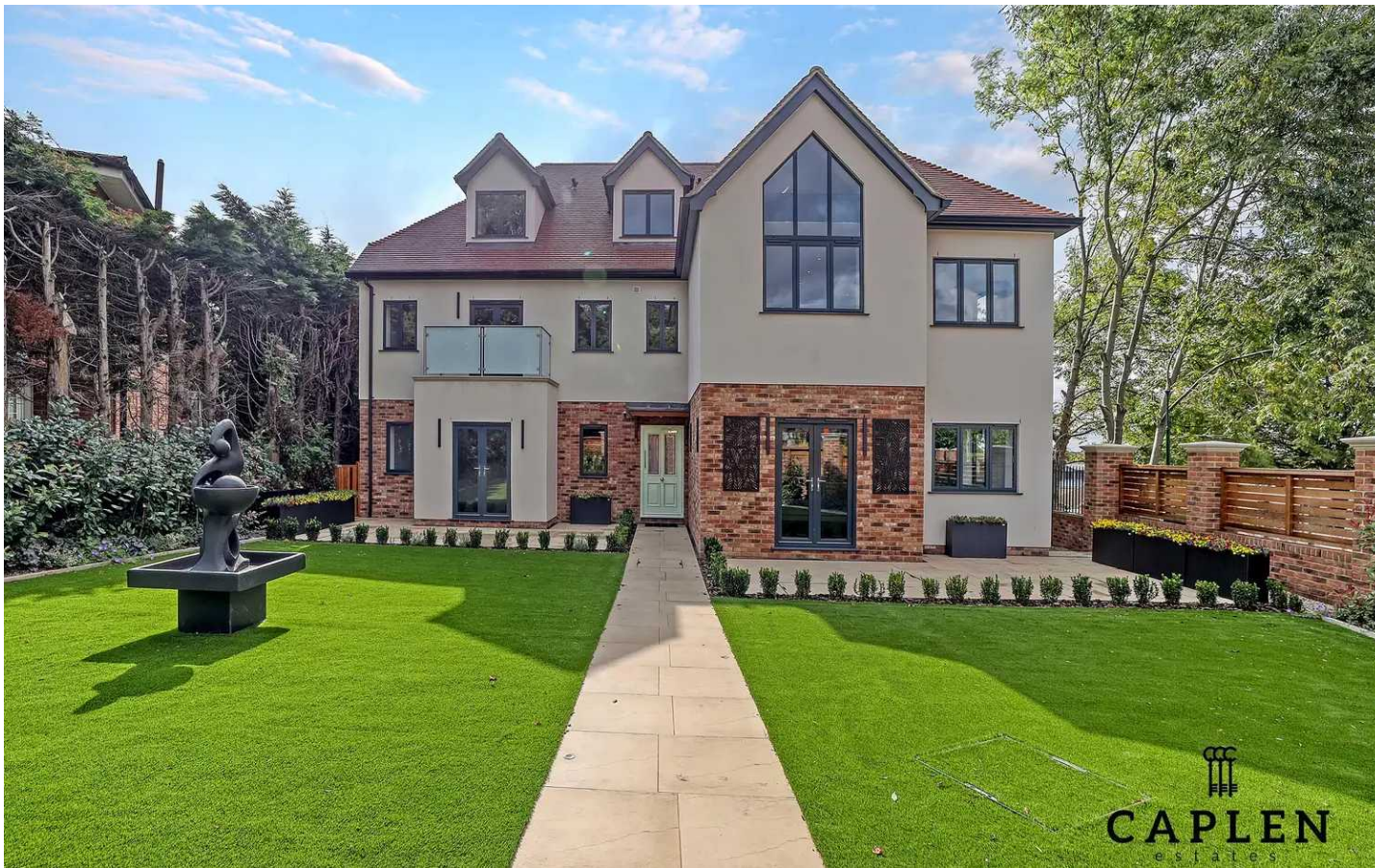


  
**CAPLEN**  
estates



  
**CAPLEN**  
estates

  
**CAPLEN**  
estates



**BALCONY**

7' 4" x 17' 1" (2.24m x 5.2m)

Private Garden/Terrace

**SECURE GATED**

1 Parking Space

  
**CAPLEN**  
estates



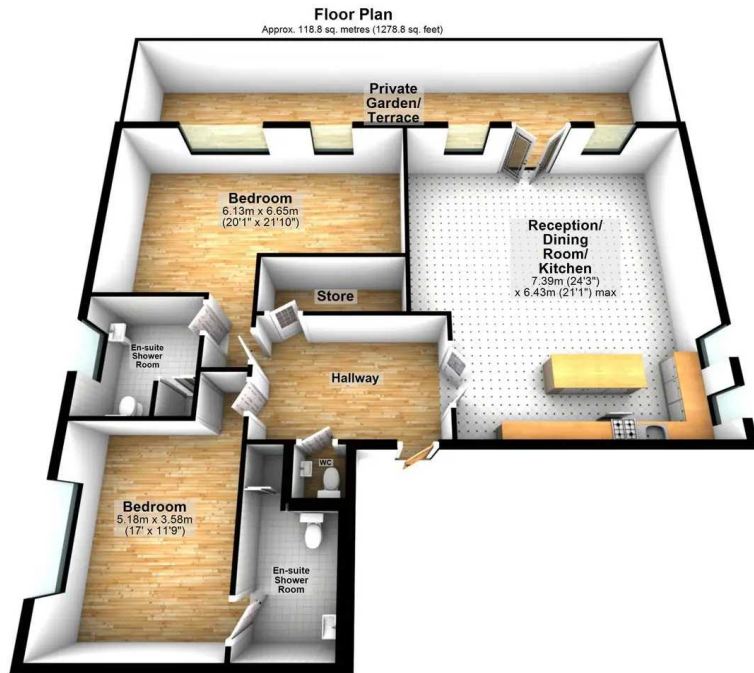
CAPLEN



CAPLEN

  
**CAPLEN**  
estates

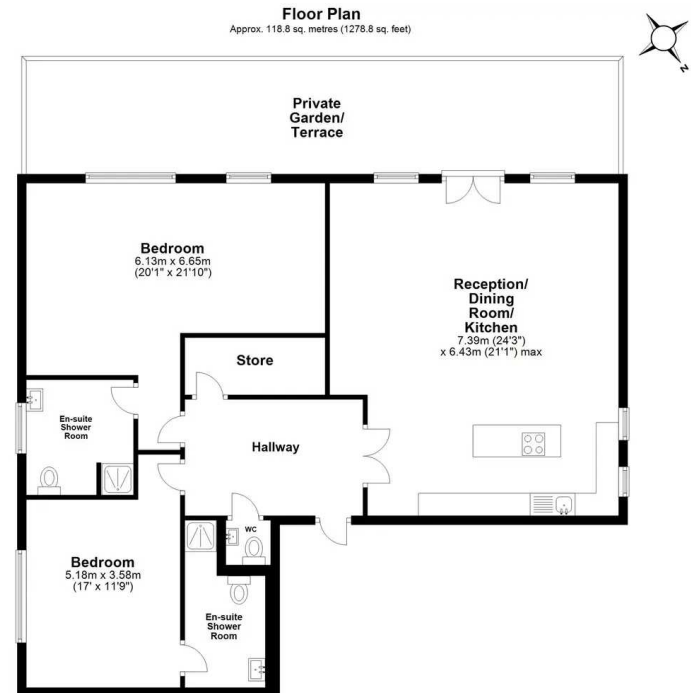




Total area: approx. 118.8 sq. metres (1278.8 sq. feet)

For illustration purposes only.

www.modaphoto.co.uk @modaphotok  
Plan produced using PlanUp.



Total area: approx. 118.8 sq. metres (1278.8 sq. feet)

For illustration purposes only.

www.modaphoto.co.uk @modaphotok  
Plan produced using PlanUp.