

Magnolia Heights, Manor Road, Chigwell

Essex

£1,385,000 | £5,000 pcm



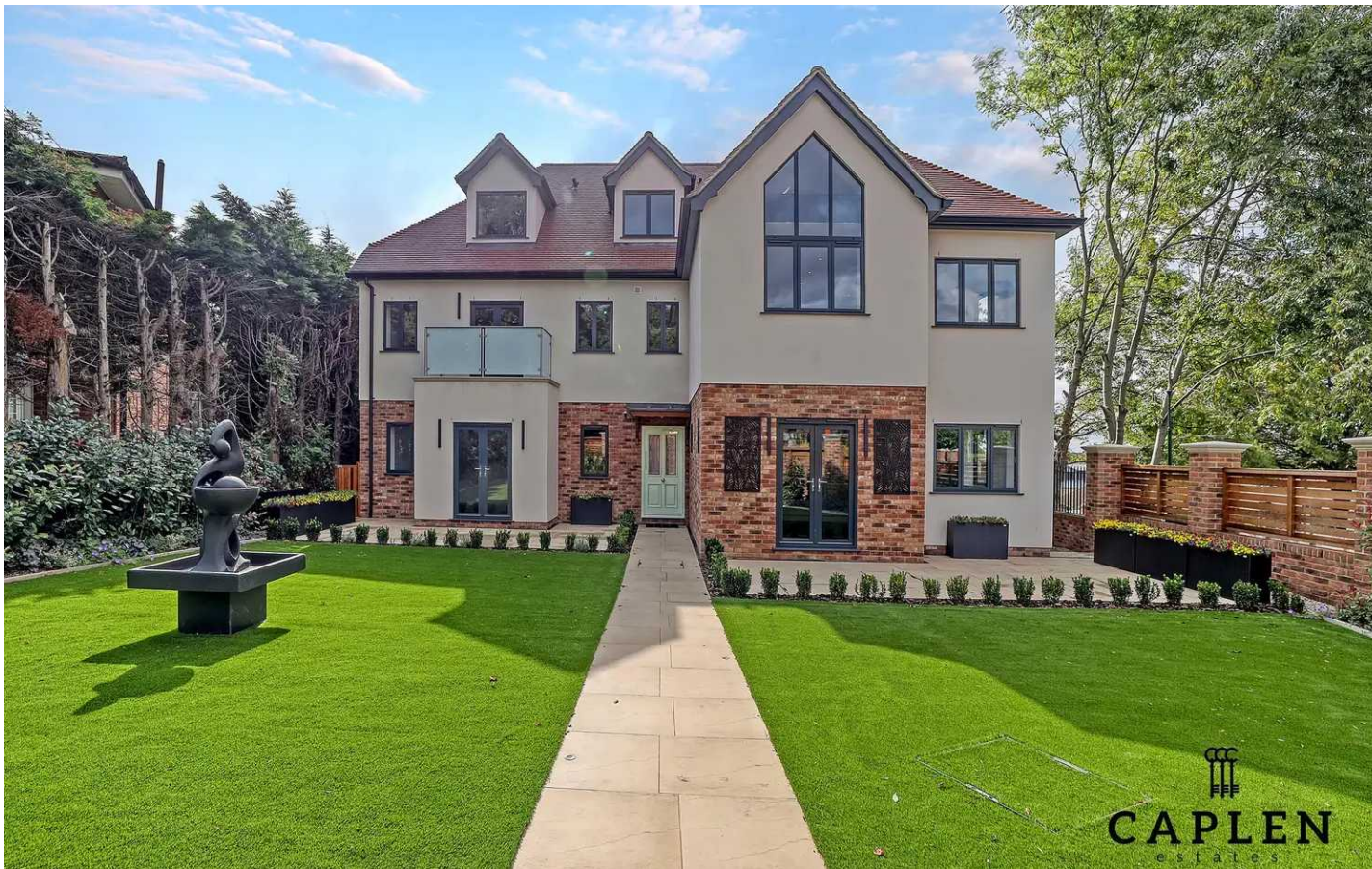
Magnolia Heights, Manor Road

Chigwell, Essex

Stylish 2-bed Penthouse in Magnolia House, Chigwell. Over 2100 sq ft, high spec throughout. Open plan kitchen/living area, spacious entrance hall. Fitted wardrobes in both bedrooms, ensuite shower room. Underfloor heating, fast broadband, communal gardens. Viewings available, call 0203 937 7733.

Tenure: Share of Freehold

- NEW BUILD APARTMENTS
- SECURE GATED DEVELOPMENT, ELECTRIC CHARGER POINTS & PARKING
- BESPOKE FITTED KITCHEN WITH INTEGRATED APPLIANCES
- UNDERFLOOR HEATED HERRINGBONE OAK FLOORING THROUGHOUT
- PRIVATE TERRACES & BALCONIES
- LANDSCAPED COMMUNAL GARDENS
- SHARE OF FREEHOLD 999YRS / SERVICE CHARGE TBC



Reception Kitchen Dining
32' 6" x 44' 6" (9.91m x 13.56m)

Utility room
6' 2" x 5' 11" (1.88m x 1.80m)

Bedroom 1

Ensuite Bathroom

Bedroom 2
15' 4" x 18' 10" (4.67m x 5.74m)

Ensuite Shower Room

WC


CAPLEN
estates

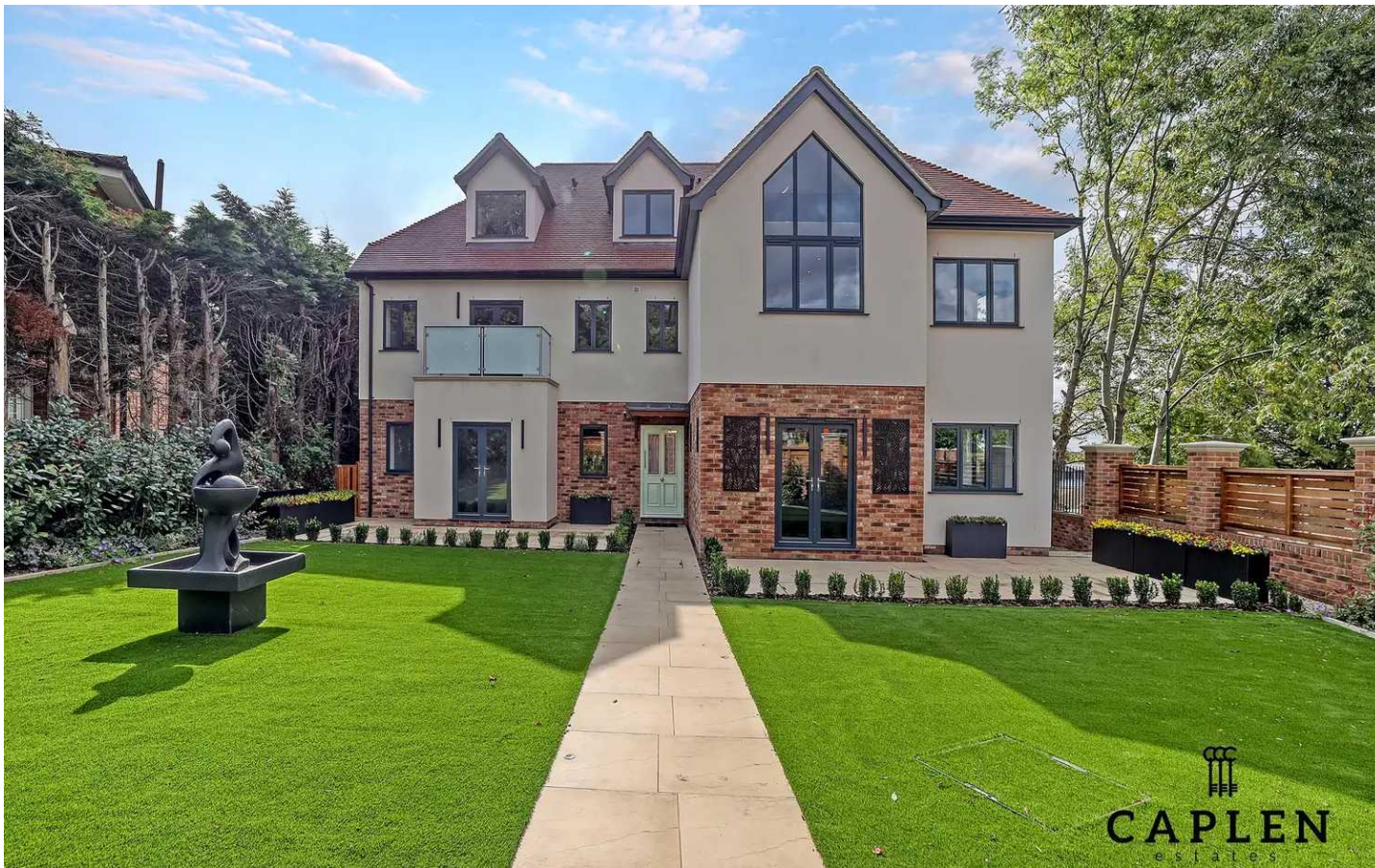


CAI
e s



CAI
e s


CAPLEN
estates



SECURE GATED

1 Parking Space


CAPLEN
e s t a t e s



CAI
e s t a t e s

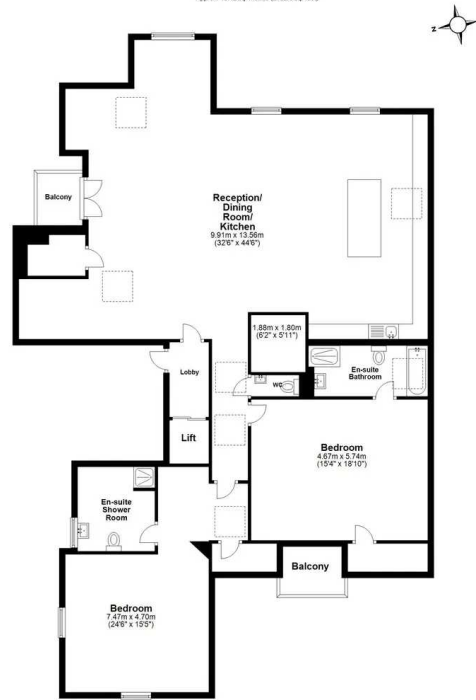


CAI
e s t a t e s


CAPLEN
e s t a t e s



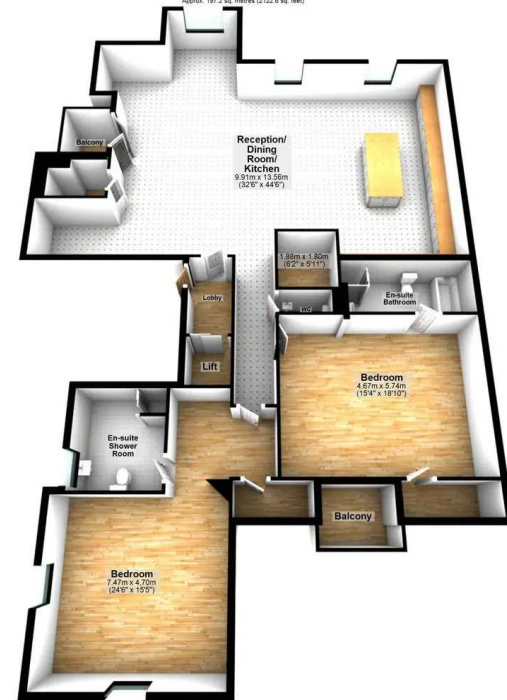
Floor Plan
 Approx. 197.2 sq. metres (2122.6 sq. feet)



Total area: approx. 197.2 sq. metres (2122.6 sq. feet)

For illustration purposes only.
 www.mcdphoto.co.uk @mcdphotovk
 Plan produced using Planific

Floor Plan
 Approx. 197.2 sq. metres (2122.6 sq. feet)



Total area: approx. 197.2 sq. metres (2122.6 sq. feet)

For illustration purposes only.
 www.mcdphoto.co.uk @mcdphotovk
 Plan produced using Planific