



**Princes Court, Higham Road, Woodford Green**

Essex

Guide Price **£370,000**



## Princes Court, Higham Road

Woodford Green, Essex

Ground floor 2-bed apartment in Woodford Green with separate kitchen, modern bathroom, spacious living room, private veranda, double bedrooms, double glazing, central heating, and garage. Close to Woodford Central Line Underground, shops, restaurants, and Epping Forest. Call 0203 937 7733 to view.

Council Tax band: C

Tenure: Leasehold

EPC Energy Efficiency Rating: D

EPC Environmental Impact Rating: D

- Two Bedroom Apartment
- Ground Floor Veranda
- Modern Bathroom
- Garage
- Gas Fired Central Heating
- Woodford Central Line Underground Station
- Approximate 104 years remaining on lease
- Service Charge Approximatly £1896/annum



**Lounge/Dining Room**  
14' 10" x 13' 0" (4.51m x 3.97m)

**Kitchen**  
10' 7" x 9' 2" (3.23m x 2.80m)

**Bedroom 1**  
12' 4" x 11' 8" (3.77m x 3.55m)

**Bedroom 2**  
10' 5" x 8' 5" (3.18m x 2.56m)

**Bathroom**  
7' 3" x 5' 5" (2.20m x 1.65m)





**BALCONY**

**GARAGE**

Single Garage

**OFF ROAD**

1 Parking Space

  
CAPLEN

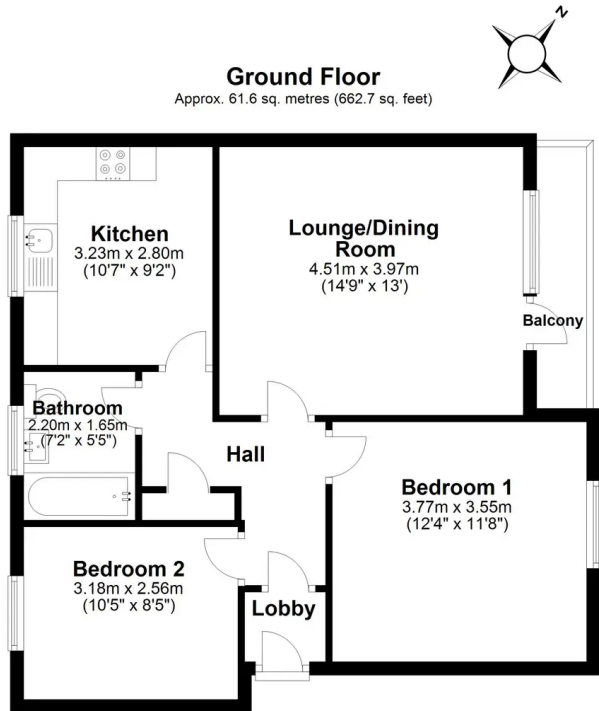


CA

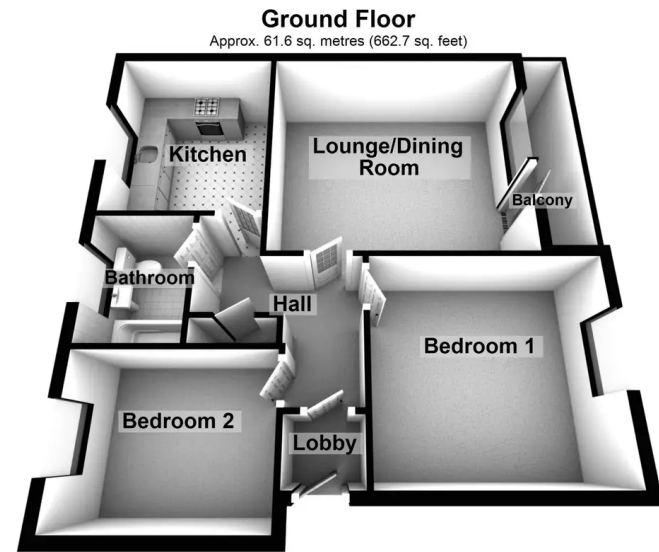


CA





Total area: approx. 61.6 sq. metres (662.7 sq. feet)



Total area: approx. 61.6 sq. metres (662.7 sq. feet)

