



Knight  
Frank  
London

## Linton Road, Loose

Offers Over £850,000



# Linton Road

Loose, Maidstone

Truly unique property in Loose with picturesque views, double garage, and spacious living areas. Features include a well-appointed kitchen/diner, four bedrooms, walk-in wardrobe, en-suite, reception room, garden room, and storage room. Beautifully landscaped garden, close to amenities and schools. Don't miss this rare opportunity.

Council Tax band: F

Tenure: Freehold

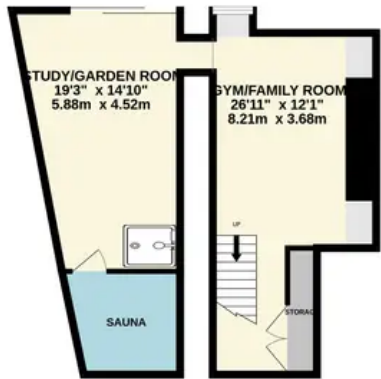
EPC Energy Efficiency Rating: D

EPC Environmental Impact Rating: E

- Stunning Views To Rear
- Double Garage
- Driveway For Multiple Vehicles
- Fantastic Transport Links & Amenities Nearby
- Versatile Living Arrangements



LOWER GROUND FLOOR  
522 sq.ft. (48.5 sq.m.) approx.



GROUND FLOOR  
1711 sq.ft. (159.0 sq.m.) approx.



1ST FLOOR  
306 sq.ft. (28.4 sq.m.) approx.



TOTAL FLOOR AREA : 2539 sq.ft. (235.9 sq.m.) approx.

Whilst every attempt has been made to ensure the accuracy of the floorplan contained here, measurements of doors, windows, rooms and any other items are approximate and no responsibility is taken for any error, omission or mis-statement. This plan is for illustrative purposes only and should be used as such by any prospective purchaser. The services, systems and appliances shown have not been tested and no guarantee as to their operability or efficiency can be given.  
Made with Metropix ©2023



Scan to  
book a  
viewing!



Scan to  
view  
online!

