



**Flat 6, Marlowe Court, 2 Petyward**  
**£3,950 pcm**

# Flat 6

Marlowe Court, London

A modern and spacious two double bedroom, two bathroom apartment, on the first floor (with lift) of this excellently located, secure, portered building in the very heart of SW3 just off Chelsea Green.

Council Tax band: G

Tenure: Leasehold

EPC Energy Efficiency Rating: C

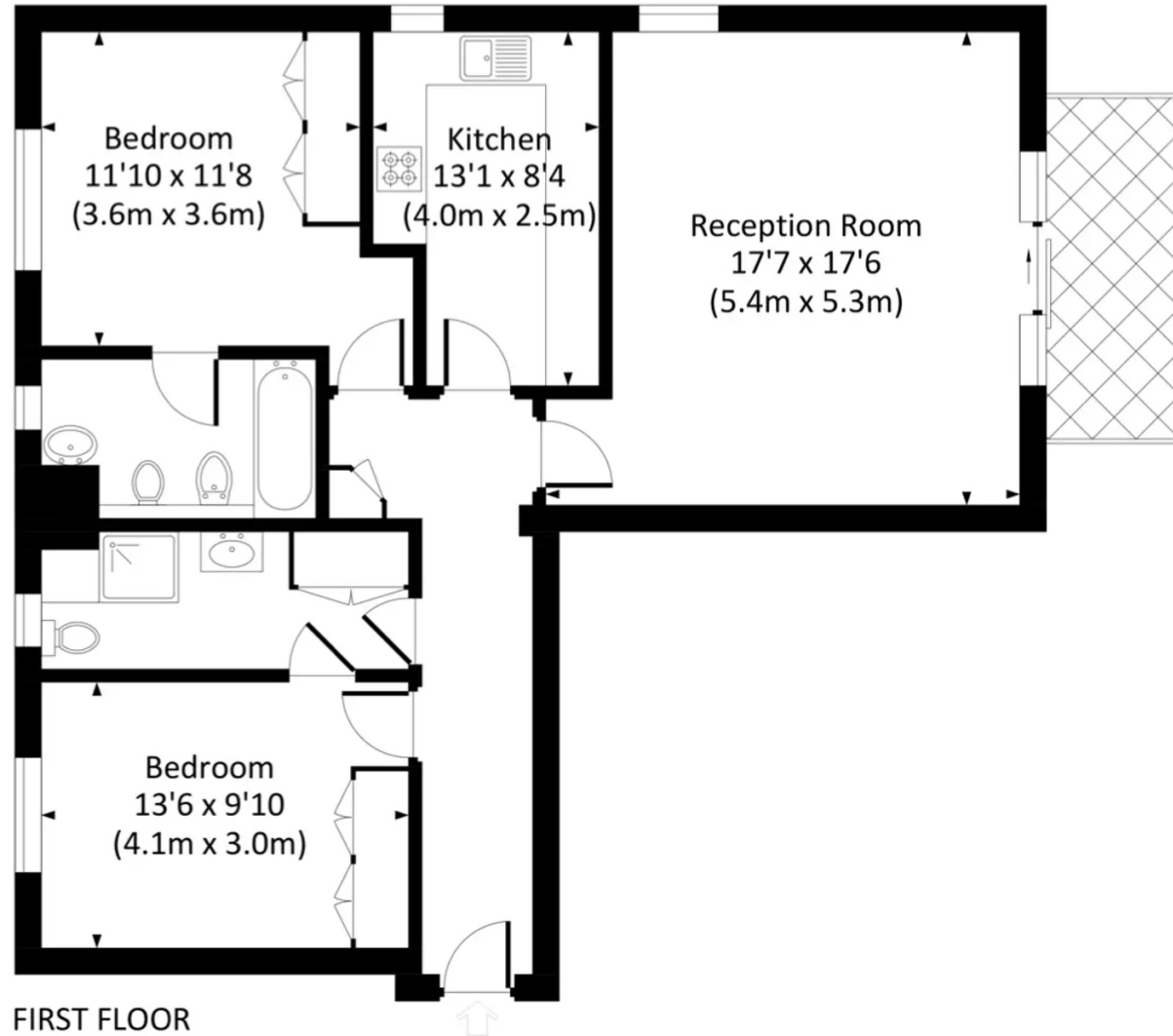
EPC Environmental Impact Rating: C

- Two double bedrooms, both with fitted storage
- First floor with lift
- Secure portered building
- Just off Chelsea Green
- Moments to the Kings Road
- Balcony
- Easy walk to Sloane Square and South Kensington
- Excellent condition throughout



# MARLOWE COURT, PETYWARD, CHELSEA, SW3

Approx. gross internal area  
942 Sq Ft. / 87.5 Sq M.





## Agent & Homes

136B Lancaster Road, London - W11 1QU

02035980808

[tim@agentandhomes.com](mailto:tim@agentandhomes.com)

[www.agentandhomes.com/](http://www.agentandhomes.com/)