



Bartholomew Court, South Street

£120,000

EPC Rating '82'

- ONE DOUBLE BEDROOM
- OVER 60'S DEVELOPMENT
- FIRST FLOOR APARTMENT
- RESIDENTS LOUNGE
- 19 FT LIVING/DINING ROOM
- TOWN CENTRE LOCATION
- COMMUNAL GARDENS
- ON SITE ESTATE MANAGER
- ALLOCATED PARKING
- CLOSE TO STUNNING COUNTRYSIDE



A lovely one bedroom first floor apartment for over 60's located within a private, quiet development in the centre of Dorking town centre. This property offers safety and security with an estate manager available on site as well as pull chords in every room which links to the 24-hour call centre.

The flat boasts a generously sized bedroom with built-in mirror sliding wardrobes, flooding the space with natural light. A fitted kitchen with ample space for a washer/dryer and fridge/freezer is included, while the reception room is also bright and airy. The flat is completed with a good-sized bathroom featuring a bath with hand held shower.

Leasehold

The Freehold and Managing Agent are RLHA (Retirement Lease Housing Association). The property features a 'non assignable' lease, which means once a purchase is complete, RLHA will issue a brand new 99 year lease to the purchaser, negating ever having to extend the lease. There is a service charge which is approximately £3,255.15 per annum and no ground rent to pay. There is also a sinking fund payable by the outgoing leaseholder, which is 0.25% of the sale price, for each for year of ownership. More information is available on request.

Location

Bartholomew Court is an appealing development comprising of ten two-bedroom and twenty-six one-bedroom apartments constructed in 1990. The location is superb, just off South Street and conveniently situated near the town centre. The development is well-equipped with a resident estate manager, an emergency alarm service, a residents' lounge, guest facilities, lift access, on-site parking, and attractive gardens and grounds. Dorking offers regular bus services to the major shopping centres of Guildford, Kingston, and Reigate/Redhill.

This property is Council Tax Band B.

VIEWING - Strictly by appointment through Seymours Estate Agents, Cummins House, 62 South Street, Dorking, RH4 2HD.

FIXTURES & FITTINGS - Items known as fixtures and fittings, whether mentioned or not in these sales particulars, are excluded from the sale but may be available by separate negotiation.

MISREPRESENTATION ACT - Whilst every care has been taken to prepare these sales particulars, they are for guidance purposes only and should not be relied upon. Potential buyers are advised to recheck the measurements.



Bartholomew Court, RH4

Approximate Gross Internal Area = 50.0 sq m / 538 sq ft

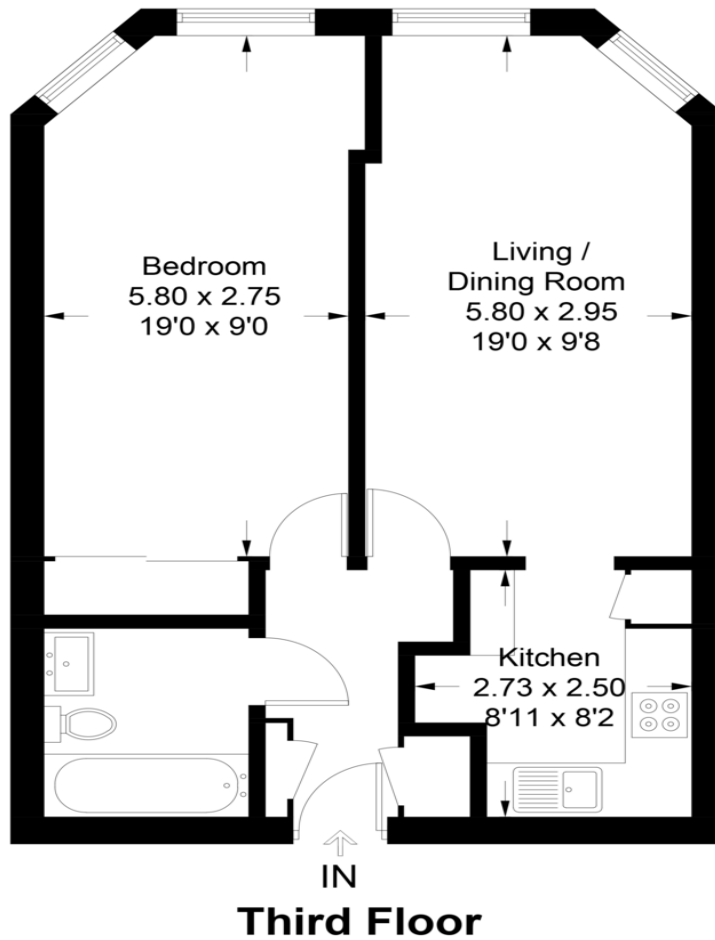


Illustration for identification purposes only, measurements are approximate, not to scale. floorplansUsketch.com © (ID1014595)

| Score | Energy rating | Current | Potential |
|-------|---------------|---------|-----------|
| 92+ | A | | |
| 81-91 | B | 82 B | 83 B |
| 69-80 | C | | |
| 55-68 | D | | |
| 39-54 | E | | |
| 21-38 | F | | |
| 1-20 | G | | |

COUNCIL TAX BAND

Tax Band B

TENURE

Leasehold

LOCAL AUTHORITY

Mole Valley District Council

CONTACT

Cummins House, 62 South
Street, Dorking, Surrey,
RH4 2HD

www.seymours-estates.co.uk
sales@seymours-dorking.co.uk
01306 776674

