



Wattleton Road, Beaconsfield



Ashington Page



In a sought-after residential area, this 3-bedroom semi-detached house provides the perfect blend of comfort and contemporary design. Boasting an exceptional level of quality throughout, this home offers a truly luxurious living experience. Situated in Beaconsfield Old Town, it is within walking distance to local amenities and railway station, provides easy access to the road network and is in catchment for primary and secondary schools.

The welcoming entrance hall leads to the extensive downstairs accommodation. The lounge offers a space to relax, and adjacent is a large study with window to the side. The spacious open-plan living and kitchen area is an absolute delight. The room is flooded with natural light from the floor to ceiling bi-folds, which lead out to the terrace, blurring the boundary between house and garden. The hand-crafted kitchen features sleek countertops and ample storage, whilst the high-end appliances include a 6-ring gas burner with double oven, large American-style fridge freezer, wine fridge and dishwasher. A convenient utility room and a guest WC complete the ground floor.

Ascending the elegant oak staircase, the first floor reveals a principal bedroom with built-in wardrobes and en suite bathroom. There are two additional well-appointed double bedrooms, one with an en suite, plus a further family bathroom. All the bedrooms are tastefully decorated and offer comfortable spaces to unwind.

With the perfect combination of underfloor heating, double glazing and high quality construction, this home has achieved an impressive EPC B rating.





Outside space:

To the rear of the property is a well-maintained garden with an inviting patio area perfect for al fresco dining during warm summer evenings. The block-paved driveway provides parking for multiple vehicles.

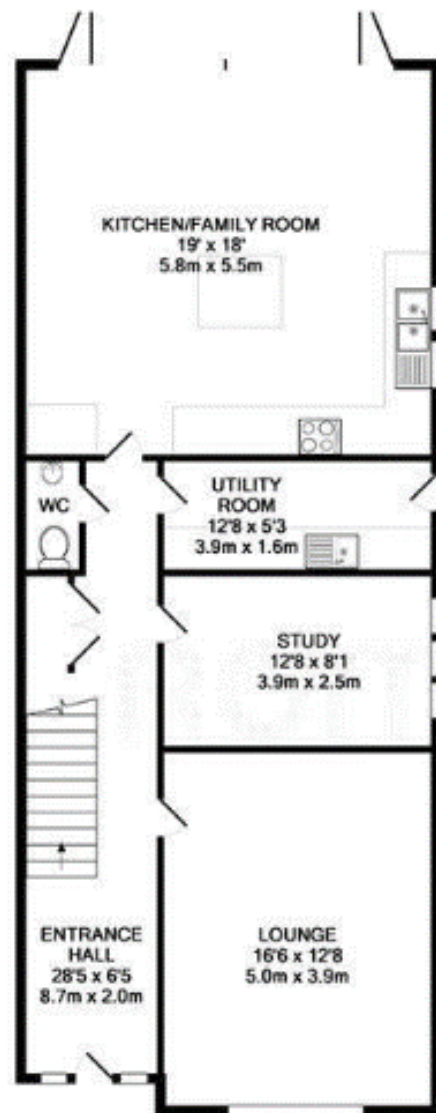
EPC B

Council Tax G

Freehold

Sat Nav HP9 1RW





GROUND FLOOR



1ST FLOOR

Whilst every attempt has been made to ensure the accuracy of the floor plan contained here, measurements of doors, windows, rooms and any other items are approximate and no responsibility is taken for any error, omission, or mis-statement. This plan is for illustrative purposes only and should be used as such by any prospective purchaser. The services, systems and appliances shown have not been tested and no guarantee as to their operability or efficiency can be given.
 Made with Metropix ©2016





For an appointment to view this property, please contact
Ashington Page on
01494 680 018

Email info@ashingtonpage.co.uk



Should you decide to use James Walton, Park Grove Mortgages Limited, you should know that we would normally receive a referral fee from him on completion of a transaction. An average referral fee is typically

www.AshingtonPage.co.uk

Important Notice: These particulars are for guidance only. They are prepared and issued in good faith and are intended to give a fair summary of the property. Any description or information should not be relied on as a statement or representation of fact or that the property or its services are in good condition. The photographs show only certain parts of the property at the time they were taken. Any areas, measurements or distance given are approximate only. Any reference to alterations to or use of, any part of the property is not a statement that any necessary planning, building regulations or other consent has been obtained. These matters must be verified by an intending purchaser. All statements contained in these particulars in relation to the property are made without responsibility of Ashington page or its clients. Neither Ashington Page (nor any joint agents) nor any of their employees has any authority to make or give any representation or warranty whatsoever in relation to the property.

Ashington Page