



26 Greville Road, Banbury
Banbury

 **RDR DASSAUR**

£320,000



26 Greville Road

Banbury, Banbury

Discover the perfect family home in the Miller Homes development in the North of Banbury, Wroxton ward. Welcome to 26 Greville Road, OX16 1HG, a beautifully presented mid-terraced three-bedroom residence that effortlessly combines modern comfort with timeless elegance.

Council Tax band: C

Tenure: Freehold

- No Chain
- Modern and sleek property
- Downstairs w.c.
- Garage
- Beautiful location
- Parking at rear and on road
- Kitchen diner
- Near to shops, parks, pubs, restaurants and other amenities



26 Greville Road

Banbury, Banbury

Spacious Living: As you step inside, you'll be greeted by a spacious carpeted entrance hall, providing access to the linoleum floored downstairs WC having a side elevation opaque window, a generously proportioned lounge, and the inviting kitchen/diner. Ascend the stairs to the first floor, where you'll find the sleeping quarters.

Kitchen/Diner: The heart of the home, the kitchen/diner is a linoleum floored culinary haven with contemporary fittings and ample white counter space with integrated Zanussi appliances with contrasting dark worktops. It's the ideal spot for shared meals and memorable gatherings with a front elevation window.



26 Greville Road

Banbury, Banbury

Lounge:

The carpeted lounge is a warming retreat for relaxing in, having UPVC French doors to the rear garden.

If we ascend up the stairs, we have a well-located side elevation window bringing illumination and ease of use. Bring us to the storage area that houses the modern Potterton boiler.

Three Bedrooms: The property offers three well-appointed bedrooms, each providing a haven of comfort and tranquillity. The master bedroom to the front elevation stands out with its en-suite, adding a touch of luxury to your daily routine.

Master en-suite shower room incorporates a 3 piece set of modern sanitary wear with a window to the front elevation.

Family Bathroom: The family bathroom which is ceramic floor tiled is tastefully designed, offering both a bathtub and overhead shower which is supported by a fully tiled tub to ceiling design. Levitating sink of modern design also adds to the sleekness of this facility.

Private Garden: Step outside to discover a delightful private garden with a patio area and a manicured lawn. It's the perfect space for gardening enthusiasts and those who love to soak up the sun.



26 Greville Road

Banbury, Banbury

Garage and Off-Road Parking: With a garage reachable from the outside of the property and via the rear garden and off-road parking, you'll have ample space for your vehicles and additional storage.

Location: Situated in a sought-after area, this property is in proximity to schools, parks, and local amenities, making it ideal for families seeking a vibrant community.

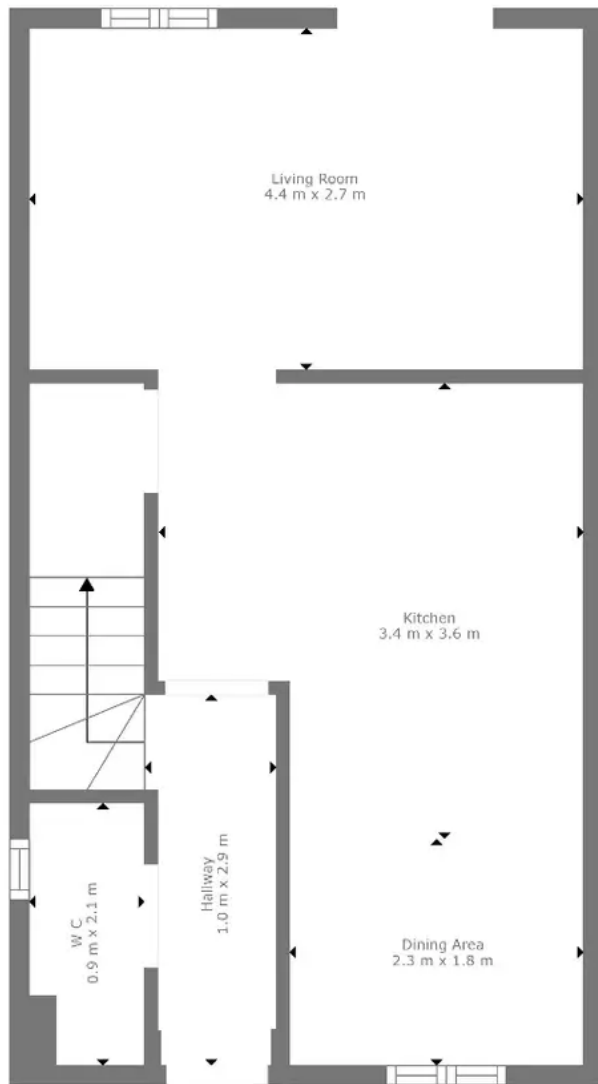
Excellent Transport Links: Commuting is a breeze, with Banbury train station conveniently nearby, connecting you to major cities.

Potential: There's great potential to put your personal stamp on this property, making it truly your own.

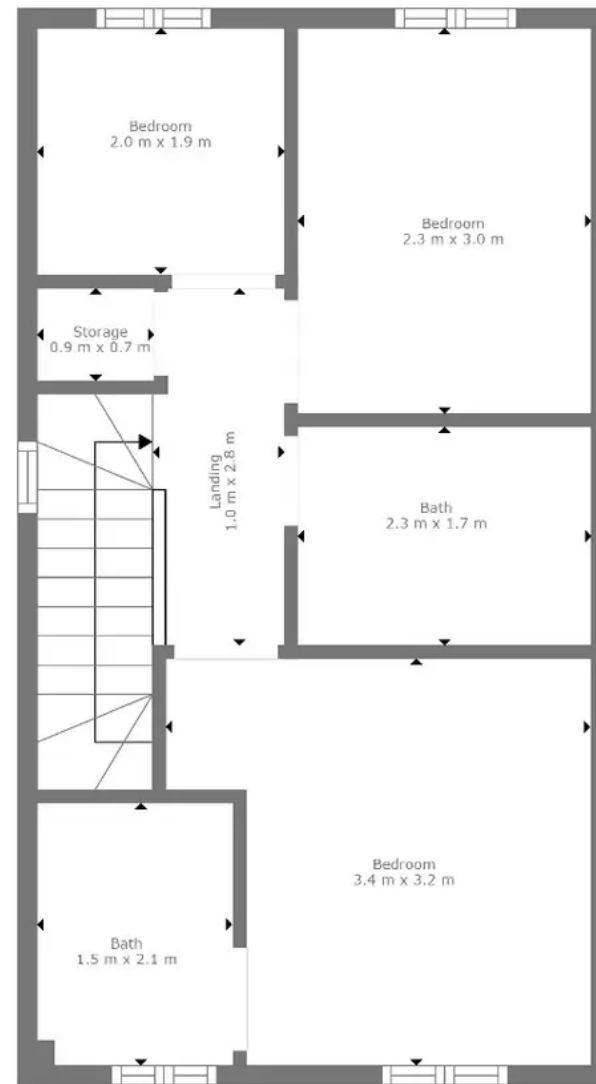
This beautifully presented mid-terraced family home in the Miller Homes development in the North of Banbury offers not only comfortable living spaces but also the potential to customize it according to your tastes and preferences.

Don't miss out on the opportunity to make 26 Greville Road, Banbury, OX16 1HG, your new home. Arrange an internal viewing to fully appreciate all that this property has to offer.





Floor 1



Floor 2



GROSS INTERNAL AREA
 FLOOR 1: 36 m², FLOOR 2: 35 m²
 EXCLUDED AREAS: STORAGE: 1 m²
 TOTAL: 71 m²

Measurements Are Calculated By Cubicasa Technology. Deemed Highly Reliable But Not Guaranteed.



RDR Dassaur estate agents

Unit 2 Nelson Dale Wharf Street, Warwick - CV34 5LB

01926268989

Admin@RDRDassaur.co.uk

rdrdassaur.co.uk/

