

Love Homes



1d West End Road, Silsoe, Bedfordshire, MK45 4DU

A charming three bedroom semi detached home situated in the heart of this popular village. Upon entering, you'll find a well-thought out layout that includes a downstairs cloakroom, living room and a farmhouse-style kitchen/diner with French doors that open up to the rear garden. Heading upstairs, you'll discover three bedrooms including the main one with built in wardrobes and an ensuite shower room. There is also a family bathroom. Outside a low maintenance rear garden, perfect for outdoor relaxation. Additionally, there is an outbuilding with light and power and off-road parking that is secured by a gate.



This property is presented by Mark Dumbrell - a Love Homes property expert with over 25 years' experience.

Find out more about this property by scanning the QR code.



6.7m



3



1

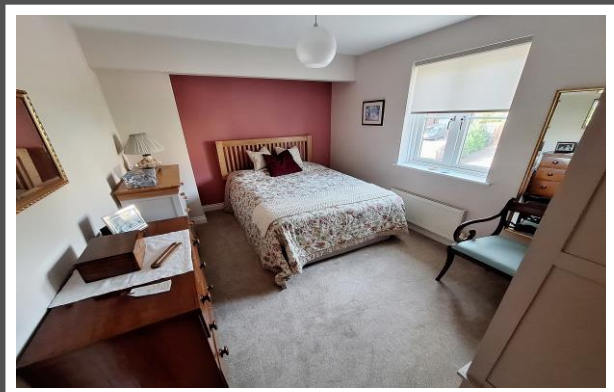


2

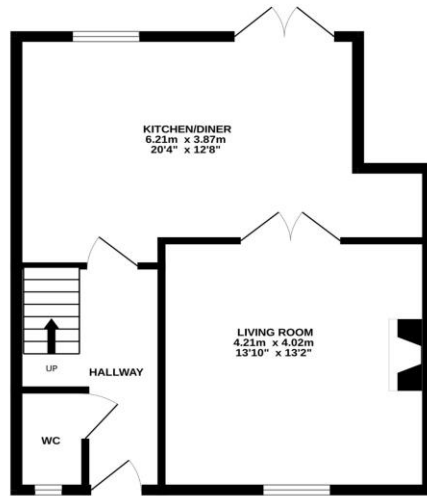
Tenure: Freehold Council Tax Band: D



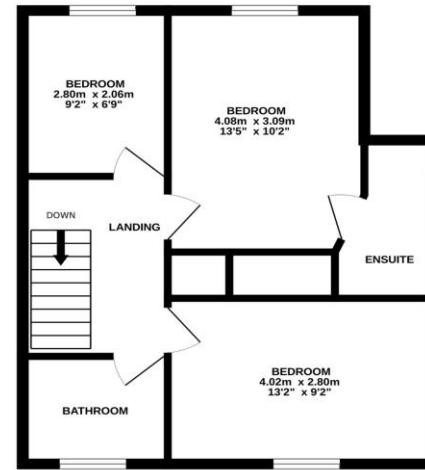
The village of Silsoe is situated along the A6 corridor between Bedford and Luton and offers a delightful village lifestyle. Notable, the historic 'Wrest Park' is just moments away, inviting you to explore one of regions most treasured and well known gardens.



GROUND FLOOR

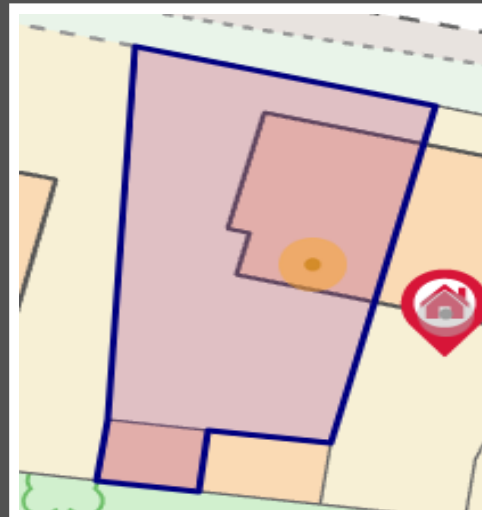


1ST FLOOR



Whilst every attempt has been made to ensure the accuracy of the floorplan contained here, measurements of doors, windows, rooms and any other items are approximate and no responsibility is taken for any error, omission or mis-statement. This plan is for illustrative purposes only and should be used as such by any prospective purchaser. The services, systems and appliances shown have not been tested and no guarantee as to their operability or efficiency can be given.
Made with Metropix ©2023

Score	Energy rating	Current	Potential
92+	A		
81-91	B		89 B
69-80	C	77 C	
55-68	D		
39-54	E		
21-38	F		
1-20	G		



These particulars are set out as a general outline in accordance with the Property Misdescriptions Act (1991) only for the guidance of intending purchasers or lessees, and do not constitute any part of an offer or contract. Details are given without any responsibility, and any intending purchasers, lessees or third parties should not rely on them as statements or representations of fact but must satisfy themselves by inspection or otherwise as to the correctness of each of them. We have not carried out a structural survey and the services, appliances and specific fittings have not been tested. All photographs, measurements, floor plans and distances referred to are given as a guide only and should not be relied upon for the purchase of carpets or any other fixtures or fittings. Gardens, roof terraces, balconies, and communal gardens as well as tenure and lease details cannot have their accuracy guaranteed for intending purchasers. Lease details, service ground rent (where applicable) is given as a guide only and should be checked and confirmed by your solicitor prior to exchange of contracts. No person in the employment of Love Homes has any authority to make any representation or warranty whatever in relation to this property. Purchase prices, rents or other prices quoted are correct at the date of publication and, unless otherwise stated, are exclusive of VAT. We retain the copyright in all advertising material used to market this Property.

2a Sharpenhoe Road, Barton-le-Clay, MK45 4SD
Tel: 01582 882440
Email: bartonleclay@lovehomes.uk
www.lovehomes.uk



Love Homes