



## Maple Lodge Roding Lane, Buckhurst Hill

£435,000

Essex



## Maple Lodge Roding Lane

Essex

Well presented 2 bed apartment in Buckhurst Hill. Close to station & shops. Open plan living/kitchen with integrated appliances. Juliette balcony with communal gardens view. Gated parking. Lease remaining 169yrs. £0 ground rent. Service charge £2160/yr. Call 0203 937 7733 to view.

Council Tax band: E

Tenure: Leasehold

EPC Energy Efficiency Rating: C

EPC Environmental Impact Rating:

- Two Bedroom Apartment
- Two Bathrooms
- Modern Decor
- Fitted Kitchen With Appliances
- Secure Allocated Parking
- Located within Walking Distance of Central Line station and Local Amenities
- Lease Remaining - 169yrs / Ground Rent - £0 - peppercorn / Service Charge - £180pm



**Loung/Diner**

15' 9" x 12' 7" (4.80m x 3.84m)

**Kitchen**

9' 2" x 8' 3" (2.79m x 2.51m)

**Bedroom One**

18' 9" x 9' 11" (5.72m x 3.02m)

**En-suite Shower Room**

6' 2" x 5' 3" (1.88m x 1.60m)

**Bedroom Two**

12' 6" x 10' 6" (3.81m x 3.20m)

**Bathroom**

6' 9" x 6' 7" (2.06m x 2.01m)





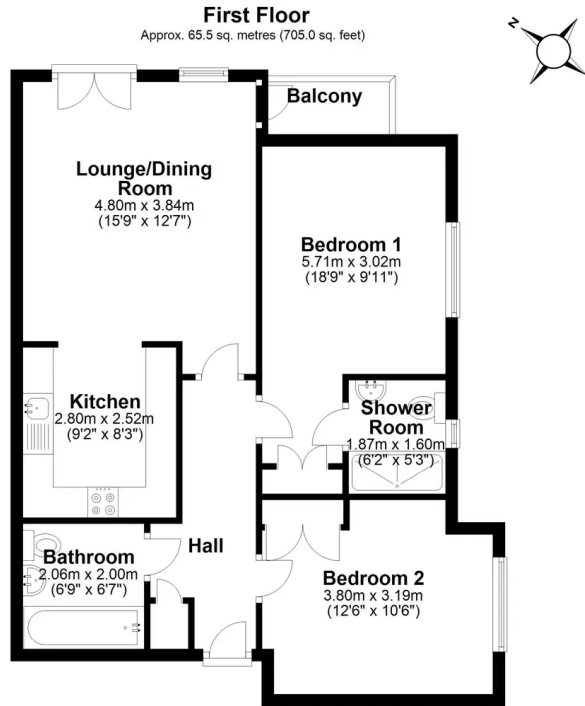
**COMMUNAL GARDEN**

**ALLOCATED PARKING**

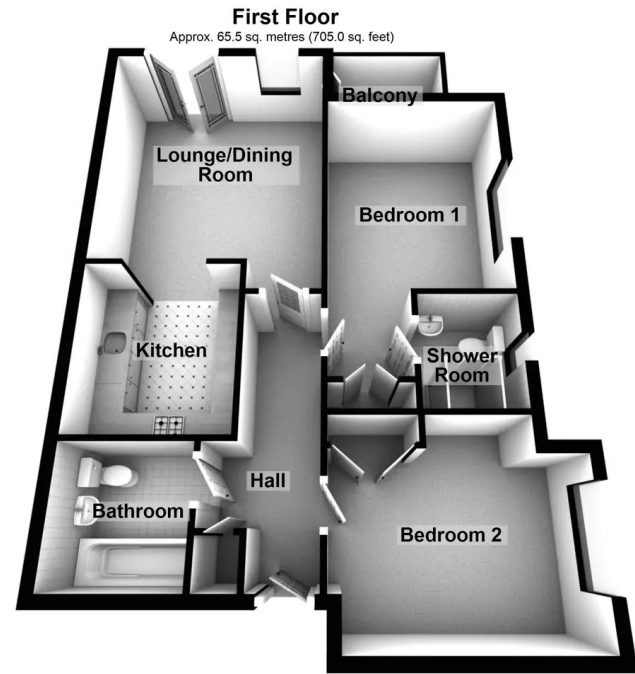
1 Parking Space







Total area: approx. 65.5 sq. metres (705.0 sq. feet)



Total area: approx. 65.5 sq. metres (705.0 sq. feet)

