



# Chapel Square,

Virginia Park, Virginia Water, Surrey. GU25 4SZ

BARTON · WYATT

# Chapel Square,

Virginia Park, Virginia Water, Surrey. GU25 4SZ.

*Superbly situated town house in Virginia Park with a pretty outlook and private garden*

- ◇ Prestigious gated development
- ◇ Communal facilities, including indoor pool, gymnasium and tennis court
- ◇ Delightful drawing room
- ◇ Double garage and driveway parking
- ◇ 24-hour security
- ◇ 3/4 bedrooms, three bath/shower rooms
- ◇ Excellent kitchen/breakfast room and conservatory
- ◇ Private garden with rear access
- ◇ Communal gardens with family facilities

## Situation

Virginia Park is situated in an ultra-convenient position only a short level walk from the picturesque shopping parades of Virginia Water with its excellent shops for day to day needs, restaurants and mainline railway station with a fast service of trains to Waterloo in approximately 42 minutes. There is an excellent Waitrose in Sunningdale and for more extensive shopping facilities, the towns of Windsor, Egham, Guildford and Kingston are all close at hand. Junction 13 of the M25 is just 3.5 miles away giving access to London, Heathrow and the motorway network. Other than the world-renowned Wentworth Club, country clubs are abound in the area such as Foxhills, Queenwood, Sunningdale and the Royal Berkshire. Delightful walks can be enjoyed around Virginia Water Lake which leads up to the Polo fields at Smiths Lawn and is adjacent to Savill Gardens and Windsor Great Park beyond for riding. The area is also very well catered for by a huge choice of private prep schools, as well as two international schools, ACS in Egham and TASIS in Thorpe.

## Fixtures and Fittings

Carpets, curtains, and light fittings available by separate negotiation.

## Services

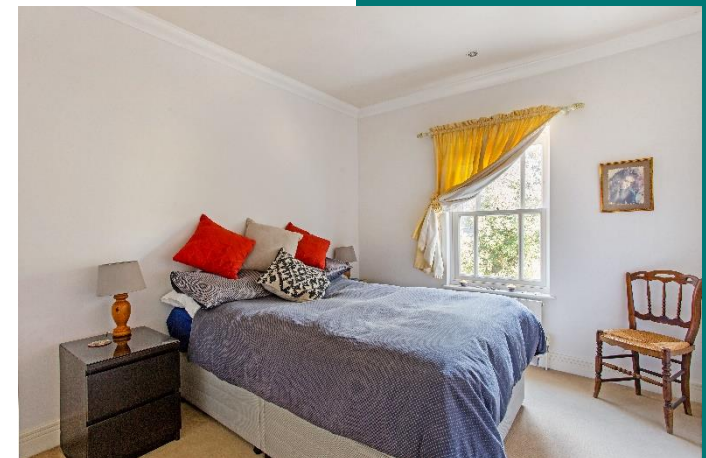
The property has mains gas, electricity, and water.

## Energy Rating

C74

## Local Authority

Runnymede Borough Council – 01932 828383





Approximate Area = 199.2 sq m / 2144 sq ft (Including Garage)

Store = 2.2 sq m / 24 sq ft

Total = 201.4 sq m / 2168 sq ft

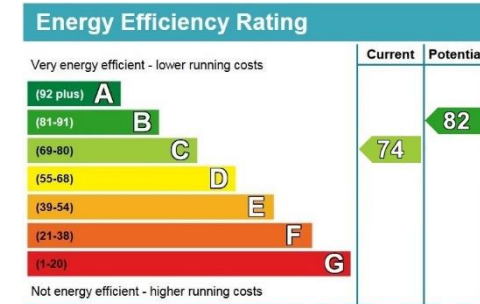


Ground Floor

First Floor

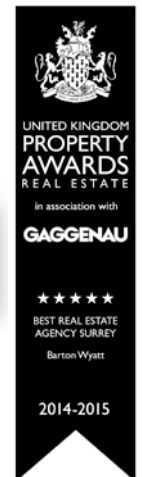
Second Floor

Surveyed and drawn in accordance with the International Property Measurement Standards (IPMS 2: Residential)  
fourwalls-group.com 325748



The Estate Office, 2 Station Approach,  
Virginia Water, Surrey, GU25 4DL  
Tel: 01344 843000

Email: homes@bartonwyatt.co.uk  
www.bartonwyatt.co.uk



Important Information: These particulars are for guidance only. They are prepared and issued in good faith and are intended to give a fair summary of the property. Any description or information should not be relied on as a statement or representation of the fact that the property, or its services, are in good condition. The photographs show only certain parts of the property at the time they were taken. Any areas, measurements or distances given are approximate only. Any reference to alterations to or us of any part of the property is not a statement that any necessary planning, building regulations or other consent has been obtained. These matters must be verified by the intending purchaser. All statements contained in these particulars in relation to the property are made without the responsibility of Barton Wyatt or its clients. Neither Barton Wyatt (nor any joint agents) nor any of their employees has any authority to make or give any representation or warranty whatsoever to the property.