



The Oliphant

Four Bedroom Home

The Oliphant is the smaller of the four bedroom properties we are building. As with all our homes it has generous open plan living space, and an abundance of natural light and good storage.

Entrance vestibule, designed with lovers of the great outdoors in mind, perfect for muddy dogs, prams/buggies or to kick off your shoes after a long walk.

Large downstairs WC with optional upgrade to shower room, subject to build timescale.

The hallway leads into your living area with a handy storage cupboard under the stairs. Spacious open plan kitchen/dining area with patio doors out onto the private garden.

The master bedroom benefits from large fitted wardrobes and features an en-suite shower room, finished in a clean and contemporary style.

Bedroom two and three are good size double bedrooms, and Bedroom four with double doors could be your perfect home office.

Family bathroom with shower over bath and back to wall white porcelain sanitaryware and chrome fittings.



www.whiteburn.co.uk/viewforth Tel : 01592 382300 Email : viewforthsales@whiteburn.co.uk

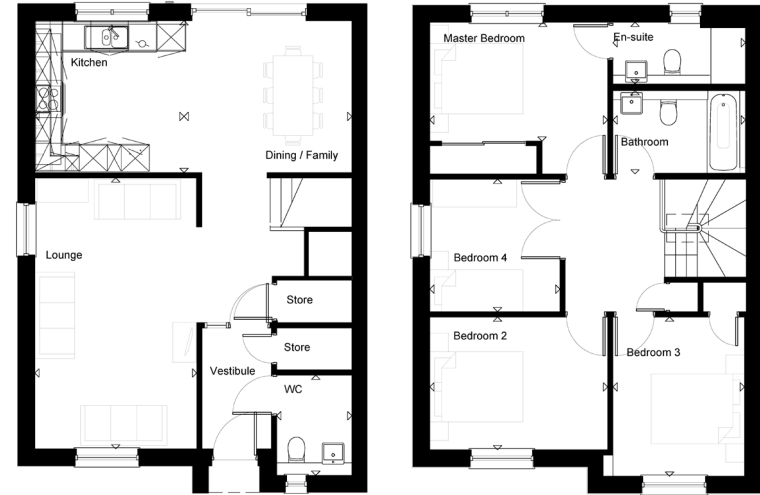




viewforth

The Oliphant

Floor plans 1320 sqft



Olliphant	Length mm	width mm	Length	Width
Vestibule	2589	1404	8' 6"	4' 7"
Dining / Kitchen	6584	3463	21' 7"	11' 4"
WC	2160	1621	7' 1"	5' 4"
Lounge	5815	3134	19' 1"	10' 3"
Master Bedroom	3825	3060	12' 7"	10' 0"
Bedroom 2	3813	2481	12' 6"	8' 2"
Bedroom 3	3413	2819	11' 2"	9' 3"
Bedroom 4 / Study	2843	2790	9' 4"	9' 2"
En-suite	1330	2842	4' 4"	9' 4"

Elevation treatments may vary. Please contact our sales team for plot specific details.
All furniture layouts are indicative.



www.whiteburn.co.uk/viewforth Tel : 01592 382300 Email : viewforthsales@whiteburn.co.uk

