

Grove Street, Castleford, West Yorkshire

Modern specification | Garden bar | Rural and riverside walks nearby | AWARD WINNING NAVIGATION POINT DEVELOPMENT | Close to amenities | Driveway | Stunning bathroom | Ready to move in

Two Bedroom Terraced House | Asking Price: £850 Per month

Rosedale
& Jones



Grove Street, Castleford, West Yorkshire

DESCRIPTION

Two large bedrooms, an open plan design to the ground floor, with a stunning rear garden/patio space and plenty of parking . All within a very popular residential development.

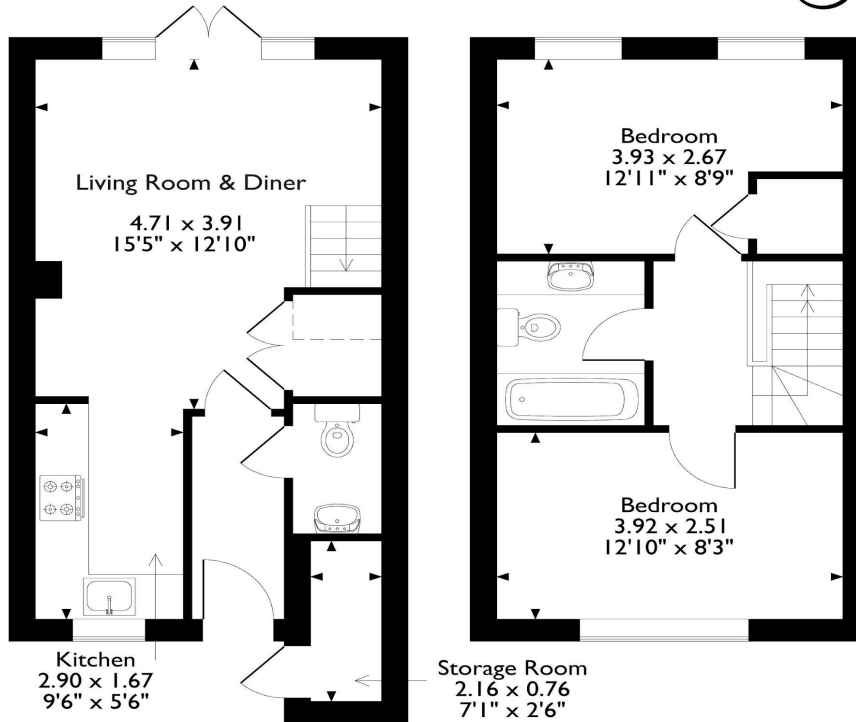
Key Features

- Modern specification
- Garden bar
- Rural and riverside walks nearby
- AWARD WINNING NAVIGATION POINT DEVELOPMENT
- Close to amenities
- Driveway
- Stunning bathroom
- Ready to move in





Grove Street, Castleford
 Approximate Gross Internal Area
 Main House = 57 Sq M/613 Sq Ft
 Outside Storage Room = 2 Sq M/22 Sq Ft
 Total = 59 Sq M/635 Sq Ft



Ground Floor

First Floor

Please note that the location of doors, windows and other items are approximate and this floorplan is to be used for illustrative purposes only. Unauthorized reproduction is prohibited.

Energy Performance Certificate

The energy efficiency rating is a measure of the overall efficacy of a home. The higher the rating the more energy efficient the home is and the lower the fuel bills will be.

Energy Efficiency Rating		Current	Potential
Very energy efficient - lower running costs			
(92-100) A			96
(81-91) B		82	
(69-80) C			
(55-68) D			
(39-54) E			
(21-38) F			
(1-20) G			
Not energy efficient - higher running costs			
England, Scotland & Wales		EU Directive 2002/91/EC	

DISCLAIMER

These particulars are intended to give a fair and reliable description of the property but no responsibility for any inaccuracy or error can be accepted and do not constitute an offer or contract. We have not tested any services or appliances (including central heating if fitted) referred to in these particulars and the purchasers are advised to satisfy themselves as to the working order and condition. If a property is unoccupied at any time there may be reconnection charges for any switched off/disconnected or drained services or appliances - All measurements are approximate.

Do you have a property
to sell or let?

If you are thinking of selling your home or just curious to discover the value of your property, We would be pleased to provide free, no obligation sales and marketing advice. Even if your home is outside the area covered by our local offices we can arrange a Market Appraisal through our national network of estate agents.



- 01924 792796
- www.rosedaleandjones.co.uk
- info@rosedaleandjones.co.uk