



38 Hillview Place, Broxburn

Offers Over £179,500



38 Hillview Place

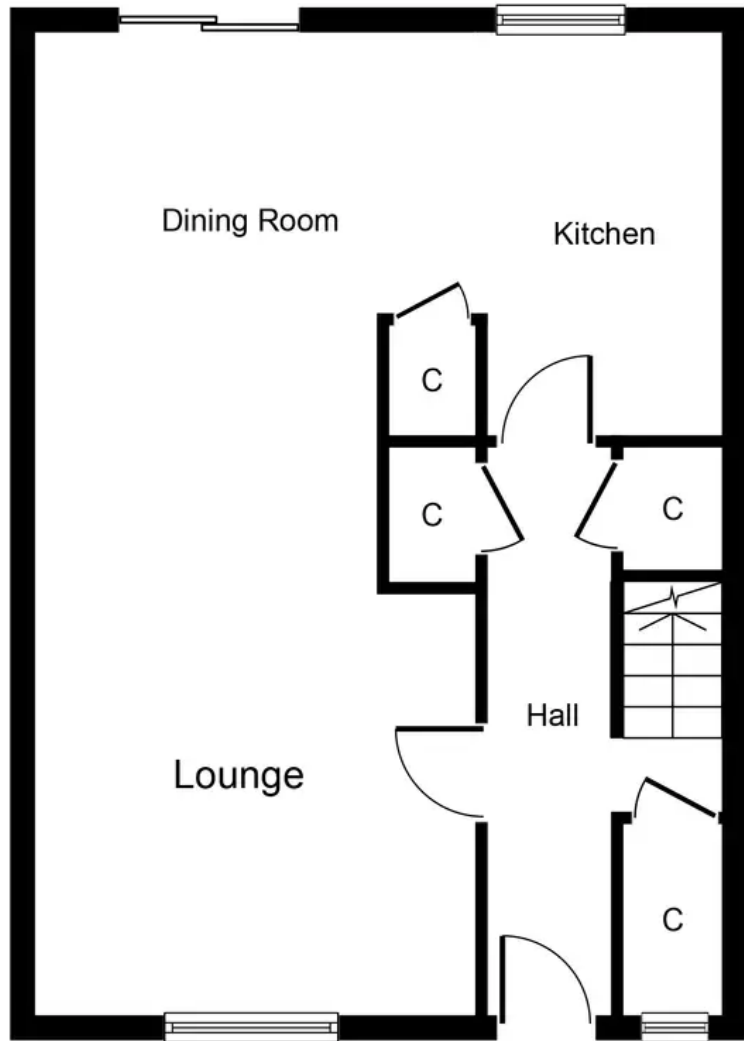
Broxburn, Broxburn

Spacious 4-bed end terraced house in sought-after location. Modern Howden's fitted kitchen, open plan dining/kitchen. South facing lounge, Generously proportioned double Bedrooms. Enclosed front/rear garden with patio, summerhouse. Ideal for families. Ample on street parking close-by Contact for viewing.

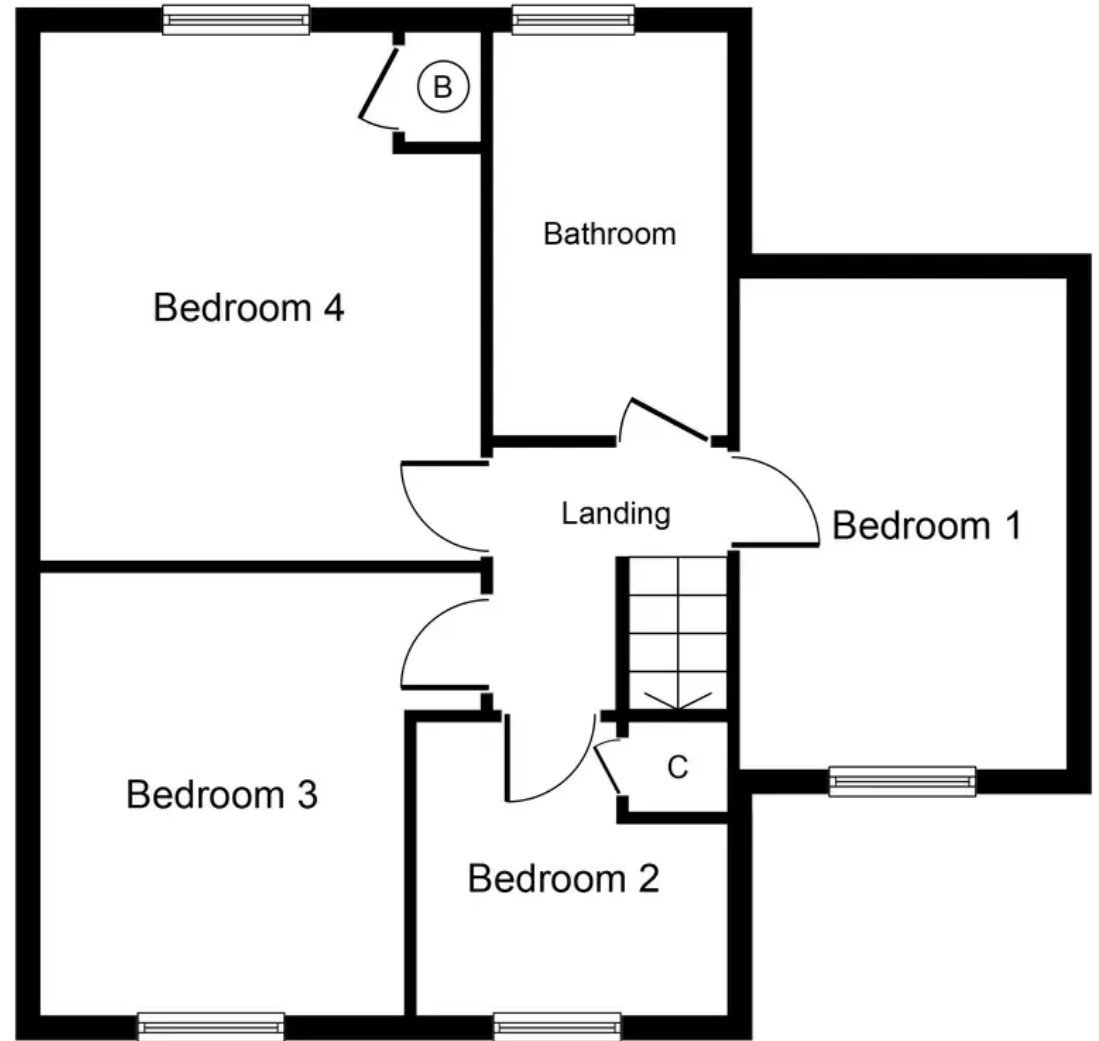
Tenure: Freehold

- Spacious Four Double Bedroom End Terraced House
- Desirable and well sought after location
- Modern Howden's High Gloss White Kitchen
- Sociable Dining area with open arch to Lounge the perfect family entertainment area
- Abundance of Storage cupboards on lower level
- Spacious Lounge with South facing light
- Ample parking bays within close proximity to property with easy access from rear garden gate





Ground Floor
Approximate Floor Area
478 sq. ft.
(44.4 sq. m.)



First Floor
Approximate Floor Area
596 sq. ft.
(55.3 sq. m.)

Whilst every attempt has been made to ensure the accuracy of the floor plan contained here, measurements of doors, windows, rooms and any other items are approximate and no responsibility is taken for any error, omission, or mis-statement. The measurements should not be relied upon for valuation, transaction and/or funding purposes. This plan is for illustrative purposes only and should be used as such by any prospective purchaser or tenant. The services, systems and appliances shown have not been tested and no guarantee as to their operability or efficiency can be given.



KnightBain Estate Agents

Knightbain, 4 Greendykes Road, Broxburn - EH52 5AG

01506 852000

info@knightbain.co.uk

www.knightbain.co.uk/

