



20 Hopeswood Park, Gloucester Road, Longhope, GL17 0LF

£130,000 Leasehold

Park Home • Bathroom • Kitchen • Lounge/Dining Room • Front and Rear Gardens

BIDMEAD COOK

8 Broad Street, Ross-on-Wye, Herefordshire, HR9 7EA
Tel: 01989 763553 Email: rossonwye@bidmeadcook.co.uk
www.bidmeadcook.co.uk

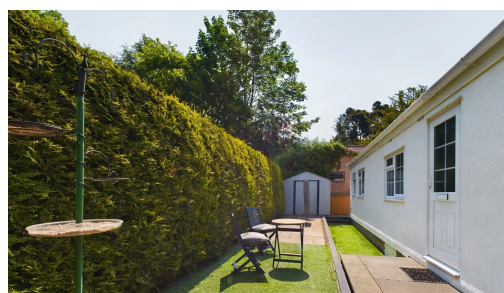
A smartly presented two bedroom park home for the over 50s, situated on a popular residential park to the outskirts of Longhope, having pleasant gardens and LPG heating. The accommodation comprises an entrance hall, kitchen which includes a range of cream Shaker-style cabinets, built-in oven and plumbing for washing machine. Lounge/dining room with French doors to the garden. Two bedrooms, the master having built-in wardrobes. Bathroom with three piece white suite including shower over the bath. To the front is gated access leading into the garden having paving and artificial grass, flower borders, young fruit trees and trellis fencing. At the side is a storage area with shed. The rear garden has patio and artificial grass, side access gate and hedged boundaries.

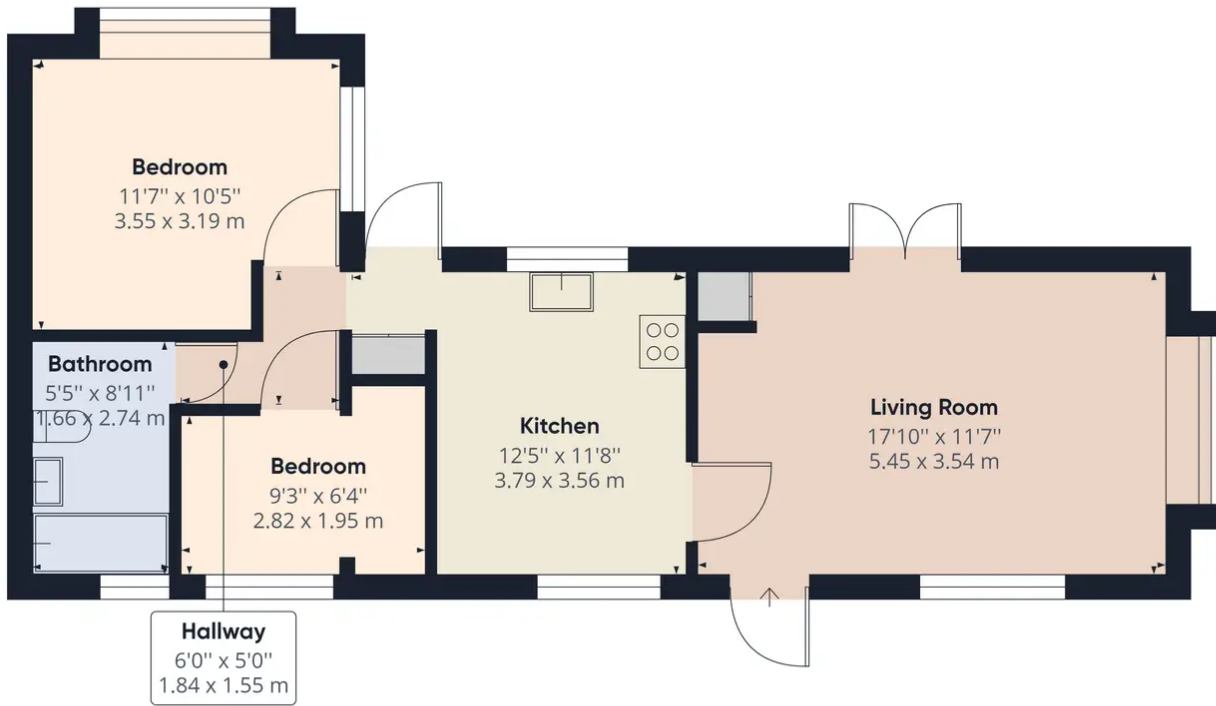
Agents Note: We are advised the tenure is Leasehold, a perpetual lease. Ground Rent: Currently £199.38 Ground Rent Review Period: Annually during March. Service Charge: Not applicable.



Council Tax band: A

Tenure: Leasehold





Approximate total area⁽¹⁾
593.49 ft²
55.14 m²

(1) Excluding balconies and terraces

While every attempt has been made to ensure accuracy, all measurements are approximate, not to scale. This floor plan is for illustrative purposes only.

GIRAFFE360



No statement in these details is to be relied upon as representation of fact, and purchasers should satisfy themselves by inspection or otherwise as to the accuracy of the statements contain within. These details do not constitute any part of any offer or contract. Bidmead Cook and their employees and agents do not have any authority to give warranty or representation whatsoever in respect of this property. These details and all statements herein are provided without any responsibility on the part of Bidmead Cook or the vendors. Equipment: Bidmead Cook has not tested the equipment or central heating system mentioned in these particulars and the purchaser are advised to satisfy themselves as to the working order and condition. Measurements: Great care is taken when measuring, but measurements should not be relied upon for ordering carpets, equipment etc. The Laws of copyright protect this material. Bidmead Cook is the owner of the copyright. This property sheet forms part of our database and is protected by the database right and copyright laws. No unauthorised copying or distribution without permission.

Bidmead Cook is a trading name of trading name of BC Acquisition Ltd. Registered in England No.14967217