



25 Grasmere Drive, Aberdare, CF44 0HP

£220,000



26 Whitcombe Street, Aberdare, Rhondda Cynon Taff, CF44 7AU
Tel: 01685 886086 Email: aberdare@bidmeadcook.co.uk
www.bidmeadcook.co.uk

25 Grasmere Drive

Aberdare, Aberdare

- Popular Location
- Semi-Detached Property
- Two Reception Rooms
- Kitchen with Integrated Appliances
- Three Double Bedrooms
- Shower Room
- Gardens
- Off Road Parking and Garage

A bay-fronted semi-detached property having convenient access to local amenities. The accommodation comprises a covered entrance leading to a spacious hallway, reception room one having bi-fold doors leading out to the rear garden and glazed doors lead into the second reception room having a bay window. Kitchen having integrated oven, hob, fridge/freezer and washing machine, and double glazed window having views over the garden to the hills beyond.

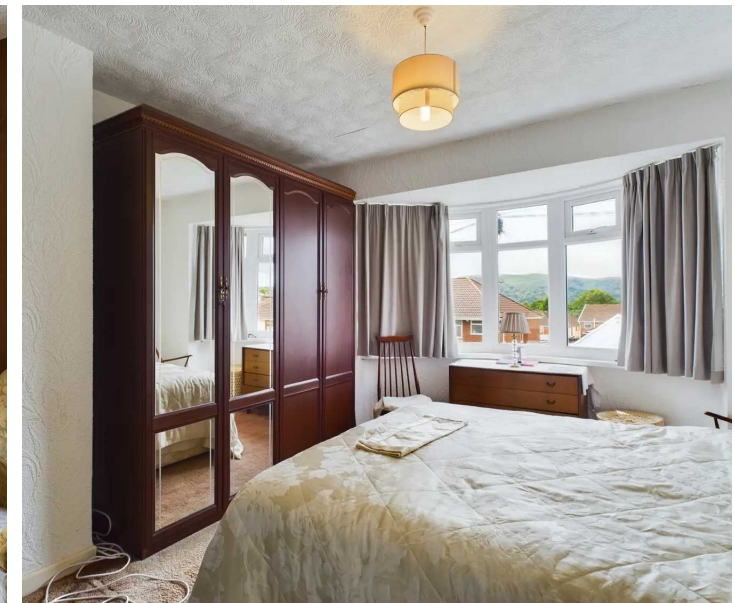
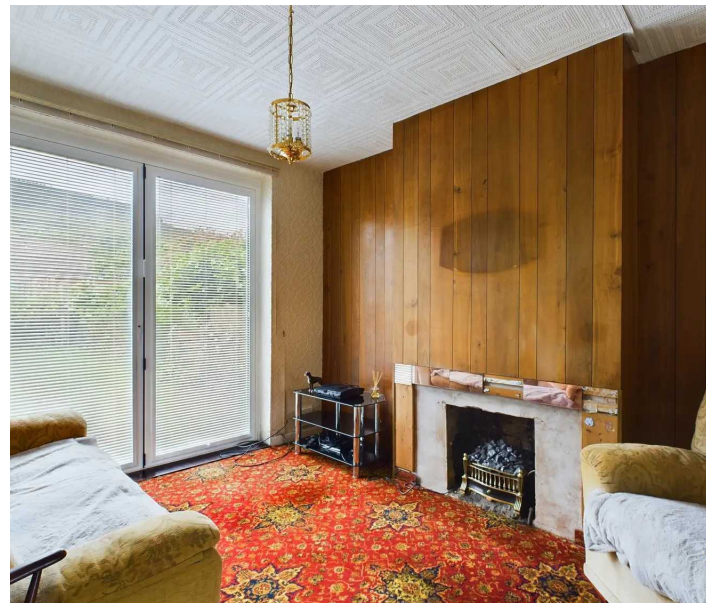
To the first floor are three double bedrooms, one having fitted cupboards. Shower room having a double shower, vanity sink unit, W.C. and tiled flooring.

To the front of the property is a lawned garden, driveway providing off road parking leading to the garage. At the rear is a lawned garden with lawn and a greenhouse.

Council Tax band: D

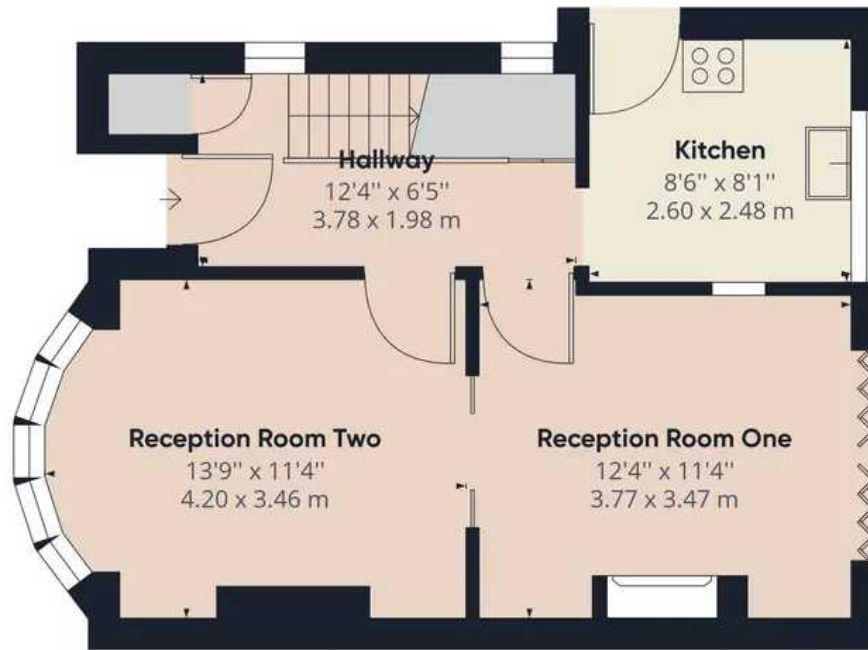
Tenure: Freehold

EPC Energy Efficiency Rating: C

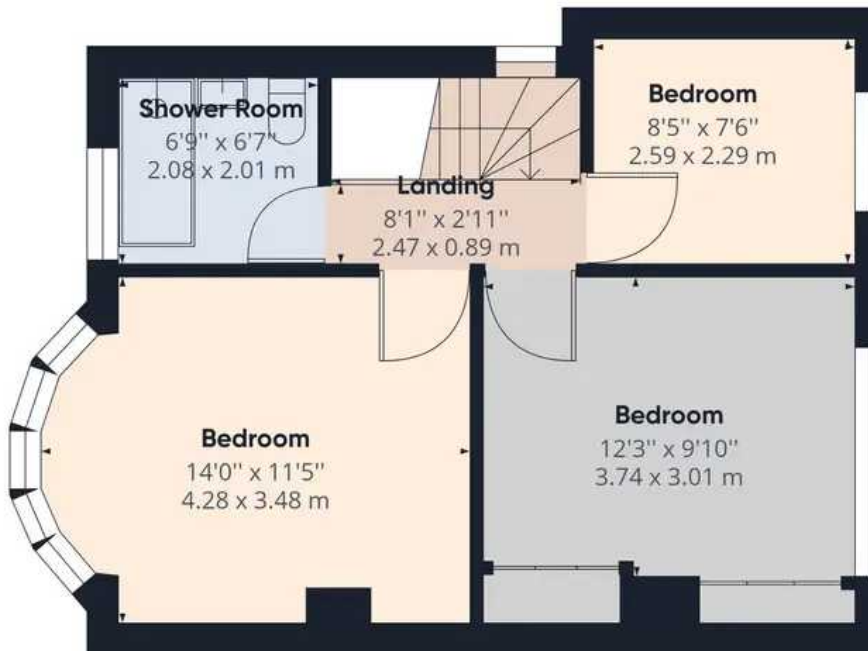








Ground Floor



Floor 1

Approximate total area⁽¹⁾

856.98 ft²

79.62 m²

(1) Excluding balconies and terraces

While every attempt has been made to ensure accuracy, all measurements are approximate, not to scale. This floor plan is for illustrative purposes only.



No statement in these details is to be relied upon as representation of fact, and purchasers should satisfy themselves by inspection or otherwise as to the accuracy of the statements contain within. These details do not constitute any part of any offer or contract. Bidmead Cook and their employees and agents do not have any authority to give warranty or representation whatsoever in respect of this property. These details and all statements herein are provided without any responsibility on the part of Bidmead Cook or the vendors. Equipment: Bidmead Cook has not tested the equipment or central heating system mentioned in these particulars and the purchaser are advised to satisfy themselves as to the working order and condition. Measurements: Great care is taken when measuring, but measurements should not be relied upon for ordering carpets, equipment etc. The Laws of copyright protect this material. Bidmead Cook is the owner of the copyright. This property sheet forms part of our database and is protected by the database right and copyright laws. No unauthorised copying or distribution without permission.

Bidmead Cook is a trading name of trading name of BC Acquisition Ltd. Registered in England No.14967217