



## 7 Greenfield Crescent, Beaufort, NP23 5PF

£185,000 Freehold

Semi-Detached Property • Lounge • Dining Room • Kitchen/Breakfast Room • Three Bedrooms • Bathroom • Gardens • Driveway

**BIDMEAD COOK**

1 Bethcar Street, Ebbw Vale, Gwent, NP23 6HH  
Tel: 01495 302301 Email: [ebbwvale@bidmeadcook.co.uk](mailto:ebbwvale@bidmeadcook.co.uk)  
[www.bidmeadcook.co.uk](http://www.bidmeadcook.co.uk)



A semi-detached property in the sought after village of Beaufort. The accommodation comprises an entrance hallway, lounge, dining room and kitchen/breakfast room. To the first floor are three bedrooms, bathroom and separate W.C.. The property benefits a gas central heating system, UPVC double glazing, front and rear gardens, and gated driveway to the front providing off road parking.



Council Tax band: B

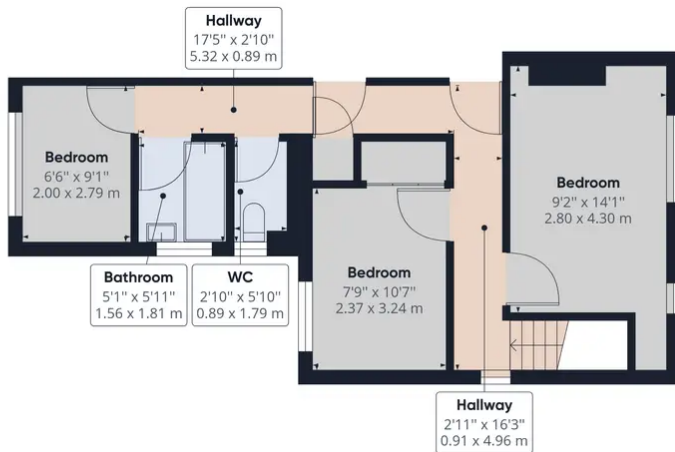
Tenure: Freehold

EPC Energy Efficiency Rating: C





Ground Floor



Floor 1

Approximate total area<sup>(1)</sup>

936.72 ft<sup>2</sup>  
87.02 m<sup>2</sup>

Reduced headroom

10.39 ft<sup>2</sup>  
0.97 m<sup>2</sup>

(1) Excluding balconies and terraces

Reduced headroom  
(below 1.5m/4.92ft)

While every attempt has been made to ensure accuracy, all measurements are approximate, not to scale. This floor plan is for illustrative purposes only.

GIRAFFE360



No statement in these details is to be relied upon as representation of fact, and purchasers should satisfy themselves by inspection or otherwise as to the accuracy of the statements contain within. These details do not constitute any part of any offer or contract. Bidmead Cook and their employees and agents do not have any authority to give warranty or representation whatsoever in respect of this property. These details and all statements herein are provided without any responsibility on the part of Bidmead Cook or the vendors. Equipment: Bidmead Cook has not tested the equipment or central heating system mentioned in these particulars and the purchaser are advised to satisfy themselves as to the working order and condition. Measurements: Great care is taken when measuring, but measurements should not be relied upon for ordering carpets, equipment etc. The Laws of copyright protect this material. Bidmead Cook is the owner of the copyright. This property sheet forms part of our database and is protected by the database right and copyright laws. No unauthorised copying or distribution without permission.

Bidmead Cook is a trading name of trading name of BC Acquisition Ltd. Registered in England No.14967217