



5 Clos Lon Fawr, Beaufort, NP23 5TB

£500,000

BIDMEAD COOK

1 Bethcar Street, Ebbw Vale, Gwent, NP23 6HH
Tel: 01495 302301 Email: ebbwvale@bidmeadcook.co.uk
www.bidmeadcook.co.uk

5 Clos Lon Fawr

Beaufort

- Detached Property
- Three Reception Rooms
- Kitchen/Breakfast Room
- Utility
- Bathroom and Two En-suites
- Five Bedrooms
- Driveway and Garage

A detached residence, built by the current owner during 2007. The property is approached via double gates leading on to a paved courtyard/driveway providing off road parking for several vehicles and a two-storey garage.

The accommodation comprises an entrance lobby, hallway, cloakroom/W.C., lounge, dining room, sitting room, kitchen/diner, utility room and conservatory. To the first floor are five bedrooms, two having en-suite facilities, and a bathroom.

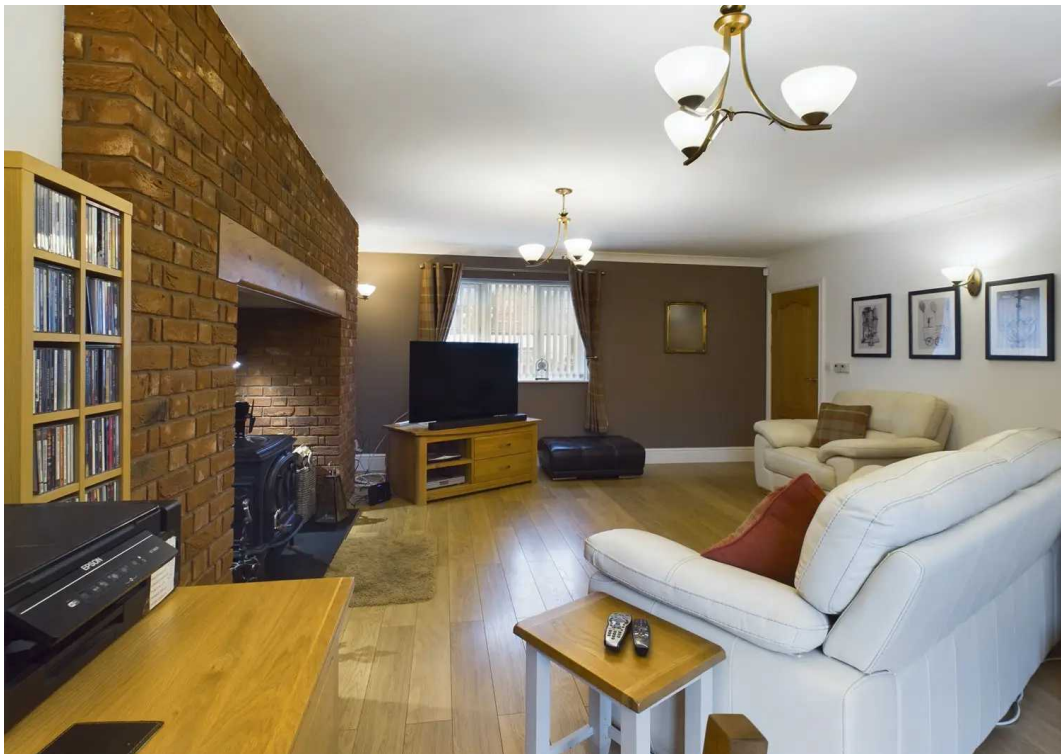
Benefits include UPVC double glazing, a gas central heating system and surrounding gardens having storage sheds.

Council Tax band: F

Tenure: Freehold

EPC Energy Efficiency Rating: B









Ground Floor



Floor 1

Approximate total area⁽¹⁾

2644.99 ft²
245.73 m²

Reduced headroom

60.18 ft²
5.59 m²

(1) Excluding balconies and terraces

☒ Reduced headroom
(below 1.5m/4.92ft)

While every attempt has been made to ensure accuracy, all measurements are approximate, not to scale. This floor plan is for illustrative purposes only.



BIDmead COOK



No statement in these details is to be relied upon as representation of fact, and purchasers should satisfy themselves by inspection or otherwise as to the accuracy of the statements contain within. These details do not constitute any part of any offer or contract. Bidmead Cook and their employees and agents do not have any authority to give warranty or representation whatsoever in respect of this property. These details and all statements herein are provided without any responsibility on the part of Bidmead Cook or the vendors. Equipment: Bidmead Cook has not tested the equipment or central heating system mentioned in these particulars and the purchaser are advised to satisfy themselves as to the working order and condition. Measurements: Great care is taken when measuring, but measurements should not be relied upon for ordering carpets, equipment etc. The Laws of copyright protect this material. Bidmead Cook is the owner of the copyright. This property sheet forms part of our database and is protected by the database right and copyright laws. No unauthorised copying or distribution without permission.

Bidmead Cook is a trading name of trading name of BC Acquisition Ltd. Registered in England No.14967217