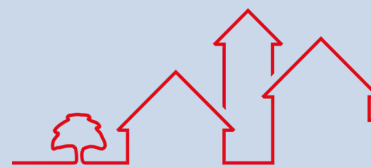




18 Westfield Road, Backwell

Guide Price **£280,000**



Parker's

Estate Agents & Property Lettings



18 Westfield Road

Backwell, Bristol

A wonderful semi-detached house on Westfield Road in the heart of Backwell, ideal for first-time buyers or those looking to start a life in this lovely village.

Upon entering, you'll find a spacious hallway with storage space under the stairs. The living room overlooks the front garden, providing a pleasant view. To the rear, there's a practical kitchen/diner with ample space for meals and gatherings.

Upstairs, you'll discover three bedrooms, each with its unique character. The rear bedroom offers good storage options, and there's a separate toilet and bathroom. Additional storage can be found in the landing.

The low-maintenance rear garden is perfect for outdoor relaxation, and a brick-built outbuilding provides extra storage. The extensive front garden features a lawn and a pond, creating a peaceful atmosphere.

This semi-detached house on Westfield Road is a great opportunity for settling into Backwell and is also available for sale with no onward chain.

18 Westfield Road

Backwell, Bristol

Nestled in the enchanting North Somerset countryside, Backwell is a delightful village with a strong sense of community. Backwell boasts excellent transport links, providing easy access to nearby towns and cities while retaining a peaceful ambience that offers a welcome respite from urban life. Families are drawn to Backwell for its outstanding schools and recreational facilities, fostering a safe and nurturing environment for children to grow. With a range of amenities, including local shops, cafes, and pubs, residents can savour a leisurely pace of life without sacrificing convenience. Whether you're looking for a cosy cottage, a spacious family home, or a tranquil retreat, Backwell offers a diverse selection of properties to suit all tastes and desires. Embrace the idyllic beauty of Backwell and discover the enchanting lifestyle it has to offer.

Council Tax band: B

Tenure: Freehold



Hall

11' 10" x 5' 11" (3.60m x 1.80m)

Lounge

12' 2" x 12' 6" (3.70m x 3.80m)

Kitchen/Diner

10' 2" x 19' 0" (3.10m x 5.80m)

Landing

8' 2" x 5' 11" (2.50m x 1.80m)





Bedroom

10' 10" x 10' 10" (3.30m x 3.30m)

Bedroom 2

8' 10" x 10' 10" (2.70m x 3.30m)

Bedroom 3

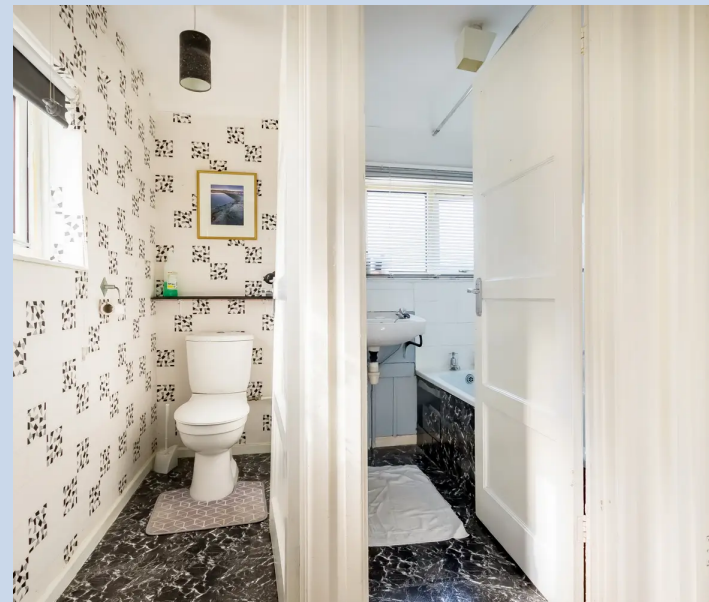
7' 10" x 8' 6" (2.40m x 2.60m)

Bathroom

5' 7" x 4' 7" (1.70m x 1.40m)

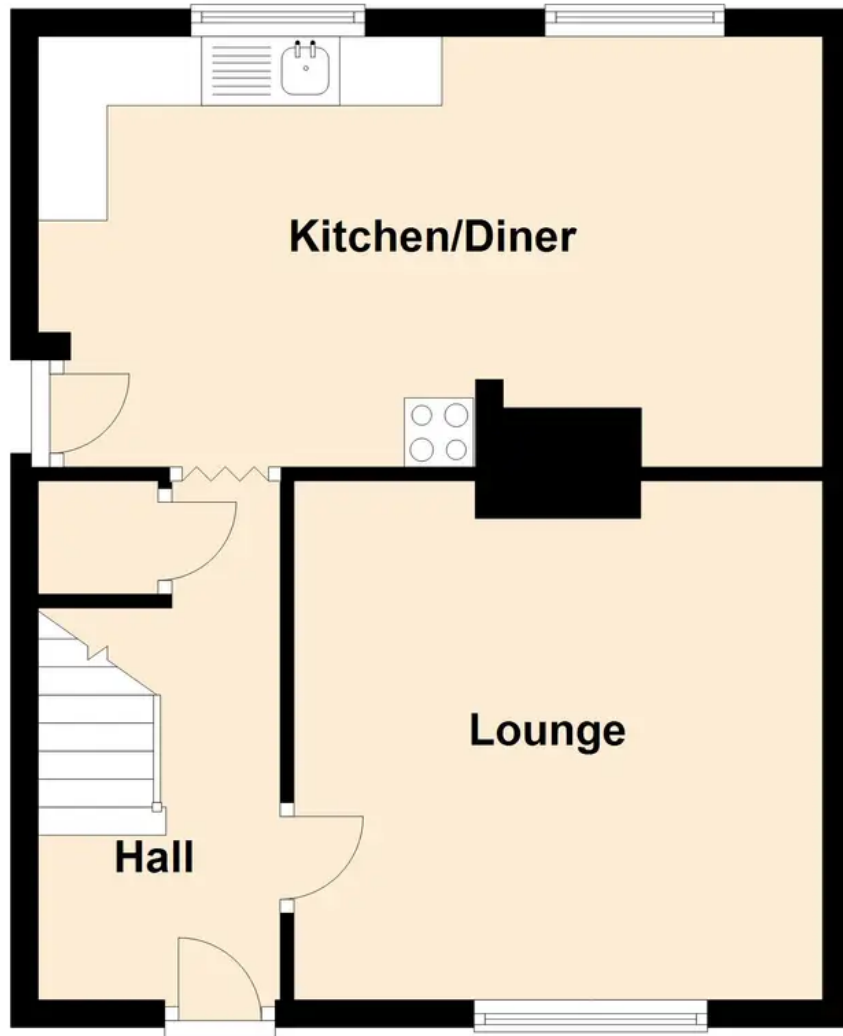
Wc

5' 7" x 4' 7" (1.70m x 1.40m)

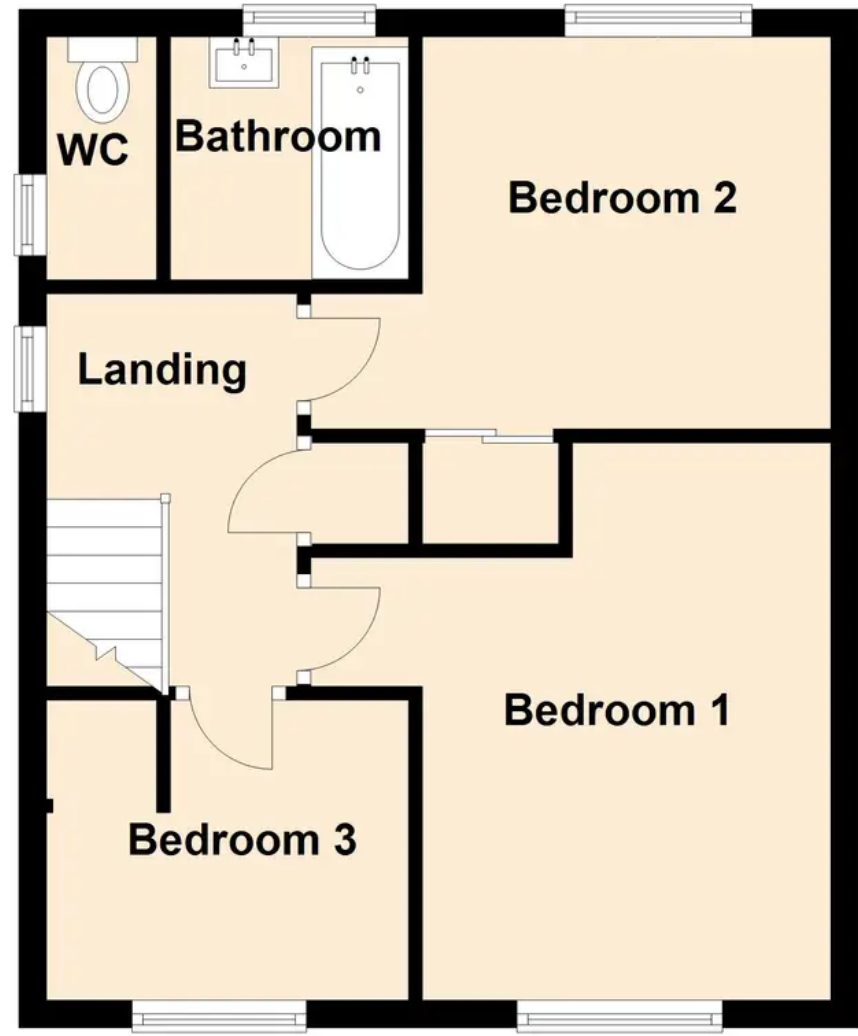




Ground Floor



First Floor



Sketch plan for illustrative purposes only
Plan produced using PlanUp.

18 Westfield Road, Backwell



Parker's Estate Agents

Parkers Property Services, 1-3 Station Road - BS48 3NW

01275 463096 • sales@parkers-ea.co.uk • www.parkers-ea.co.uk/

