



106 St. Andrews Road, Southsea

Offers in Region of £595,000

 chinneckshaw



106 St. Andrews Road

Southsea

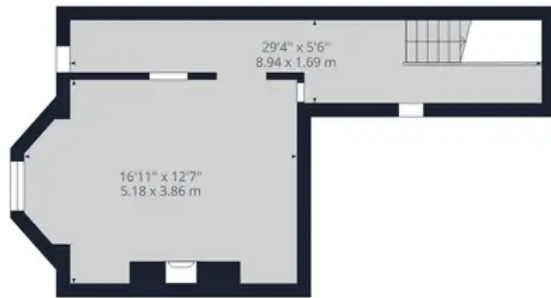
If you're in search of a property full of character, ready for you to move in and call it home, your search ends here. This exquisite semi-detached 4-bedroom home has been tastefully extended, boasting a brand-new kitchen and the addition of bi-fold doors. To truly grasp the beauty this property offers, you must see it in person.

As you step inside, you'll find an entrance hall that leads to an open-plan lounge and dining area. This inviting space features custom-made wooden shutters, an elegant ceiling rose, picture rail, a functional fireplace for cozy winter evenings, and original floorboards throughout. The dining room also offers rear access.

Additional highlights include a downstairs W.C., access to a basement for extra storage, with a window providing potential for conversion into additional living space. To the rear of the property lies a stunning extension, often referred to as 'the hub of the home.' It boasts a newly fitted kitchen and boiler with integrated appliances, while the bi-fold doors open up to the rear garden creating one large entertaining space in the summer months. The low-maintenance private rear garden is thoughtfully landscaped with stone and decking, adorned with a sleeper-edged border featuring trees and plants, creating a serene garden space ideal for entertaining or relaxing with family. It also offers side property access to and from the front forecourt.

Moving to the first floor, you'll discover a newly fitted walk-in shower room and a generously sized bedroom. On the upper floor, there's another spacious bedroom and a large master bedroom, featuring made-to-measure wooden shutters, a ceiling rose, picture rail, a fireplace, and wooden floorboards throughout.





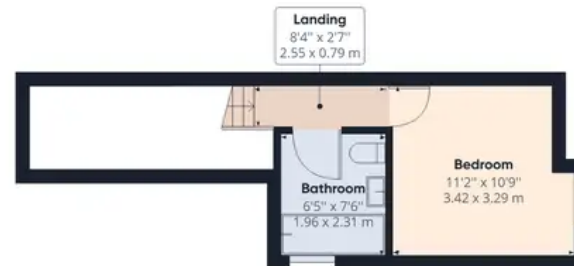
Floor -1



Ground Floor



Floor 1



Floor 2

Approximate total area⁽¹⁾

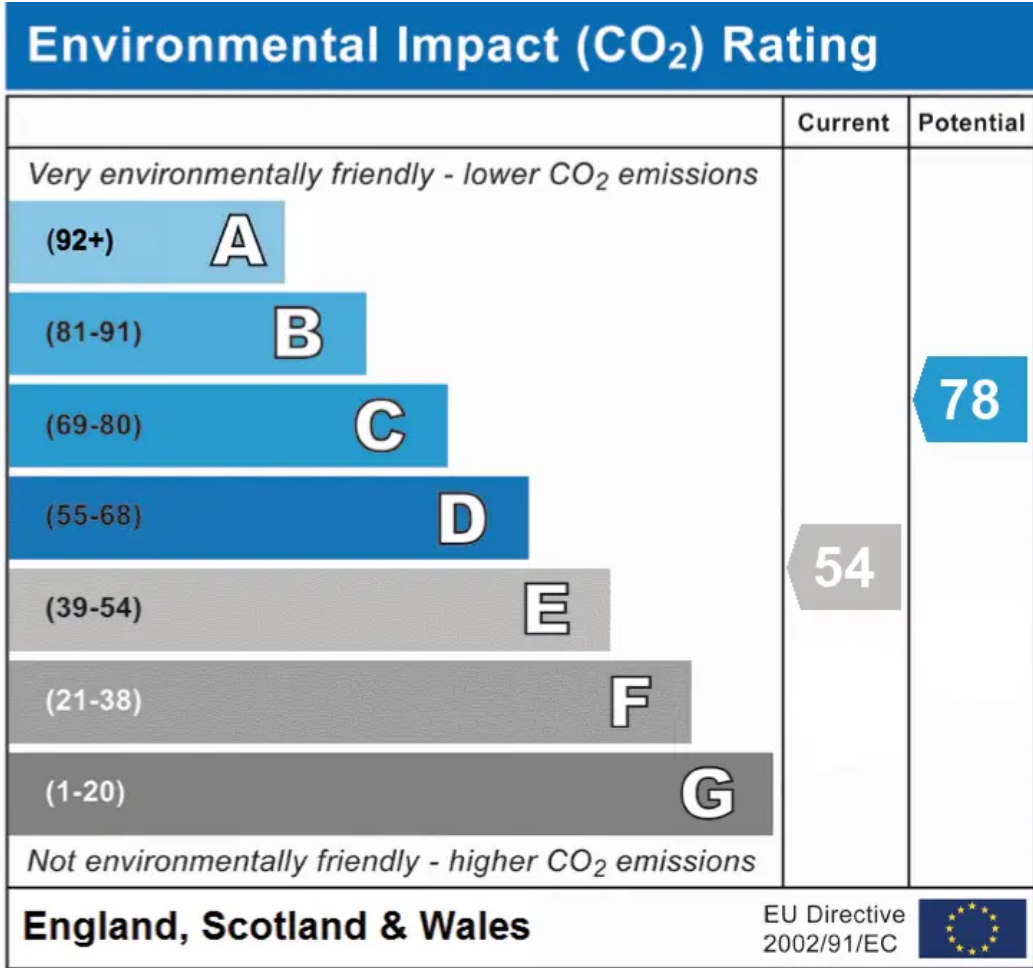
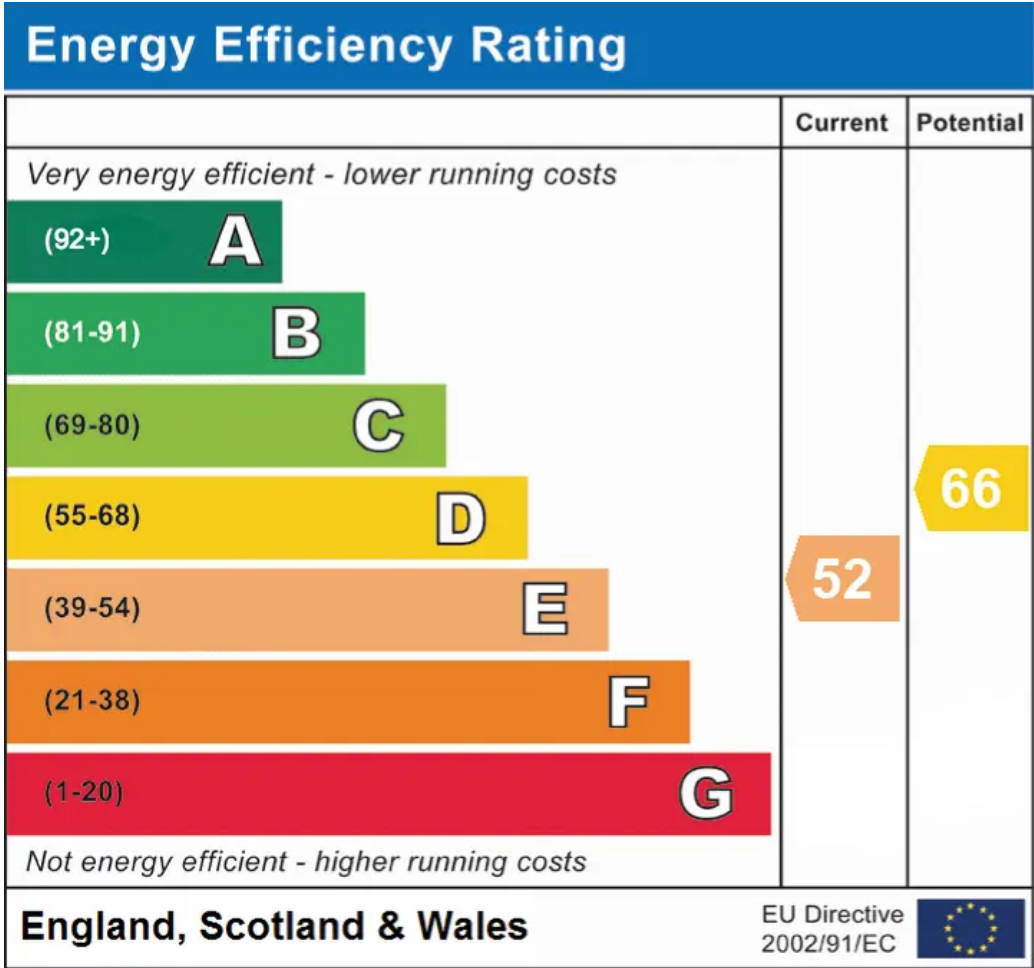
1776.63 ft²

165.05 m²

(1) Excluding balconies and terraces

While every attempt has been made to ensure accuracy, all measurements are approximate, not to scale. This floor plan is for illustrative purposes only.

GIRAFFE360



Chinneck Shaw

Bridge House, Milton Road, Portsmouth – PO3 6AN

023 9282 6731

hello@chinneckshaw.co.uk

www.chinneckshaw.co.uk/

Chinneck Shaw, Bridge House, Milton Road, PO3 6AN Consumer Protection from Unfair Trading Regulations 2008: These details are for guidance only and complete accuracy cannot be guaranteed. If there is any point which is of particular importance, verification should be obtained. The do not constitute a contract or part of a contract. All measurements are approximate. No guarantee can be given with regard to planning permissions or fitness for purpose. No apparatus, equipment, fixture or fitting has been tested. Items shown in the photographs are NOT necessarily included. Interested Parties are advised to check availability and make an appointment to view before travelling to see a property.