



A beautifully presented three-bedroom period home with a modern stylish kitchen, a bright living room leading into a dining room, a sizeable bathroom with a rolled edge bath and a rear garden with views across the neighbouring rooftops. A viewing is highly recommended.

90 Barewell Road | Torquay | TQ1 4PA





PROPERTY TYPE

Mid Terraced House  
Freehold



SIZE

1020 sq ft



LOCATION  
Town



AGE

Victorian (1837 - 1901)



BEDROOMS

3



RECEPTION ROOMS

2



BATHROOMS

1



WARMTH

Gas Central Heating



PARKING

On Road Parking



OUTSIDE SPACE

Garden



EPC RATING

61 D



COUNCIL TAX BAND

TBC



### in a nutshell...

- Mid Terraced Period Home
- Three Bedrooms
- Bright Living Room
- Dining Room
- Stylish, Modern Kitchen
- Generous Bathroom
- On Road Parking
- Rear Garden with views
- Popular Area of Saint Marychurch
- NO CHAIN







## the details...

A beautifully presented period property with three bedrooms, a stunning bathroom with rolled edge bath, living room, dining room and a modern kitchen benefiting from some lovely character features and a rear garden. The house enjoys a warm feeling from the gas central heating.

You enter the property into a hallway where stairs rise to the first floor and doors give access to the downstairs accommodation. The living room sits to the front of the property with a return door to the hallway. A large window overlooks the front aspect and allows natural light to flood the room. There is a large open fireplace with shelving and cupboards built on either side.

The living room opens to the dining room, which has a further, possibly original, fireplace and more storage. It is a well-sized room with space for a family table and chairs. A door leads into the hallway.

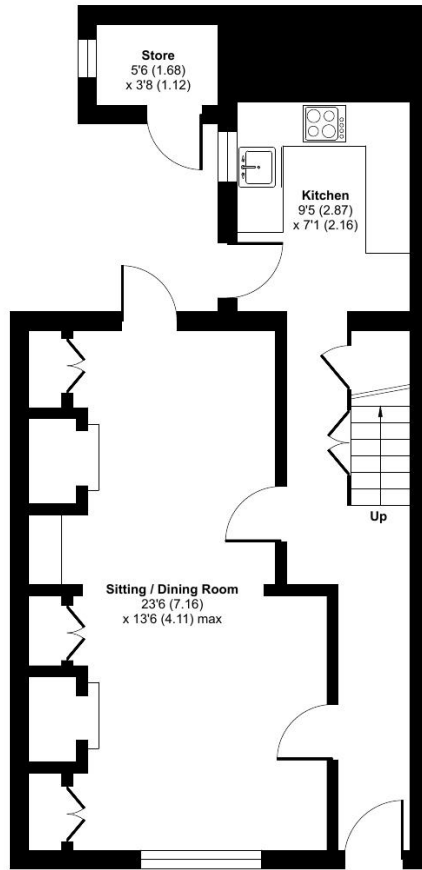
The kitchen is a bright room with a large window and a door onto the rear garden. It has been fitted with powder blue floor cupboards with a solid worktop, integrated dishwasher, electric oven and hob, extractor hood and space for a fridge/freezer.

On the first-floor landing is the generous bathroom, fitted with a rolled edge freestanding bath, separate shower unit, a WC and basin. A window allows for natural light and ventilation. Back on the landing, further stairs lead to the bedrooms. The main bedroom and bedroom two are sizeable double rooms with large windows and space for wardrobes. The third bedroom is a bright single room.

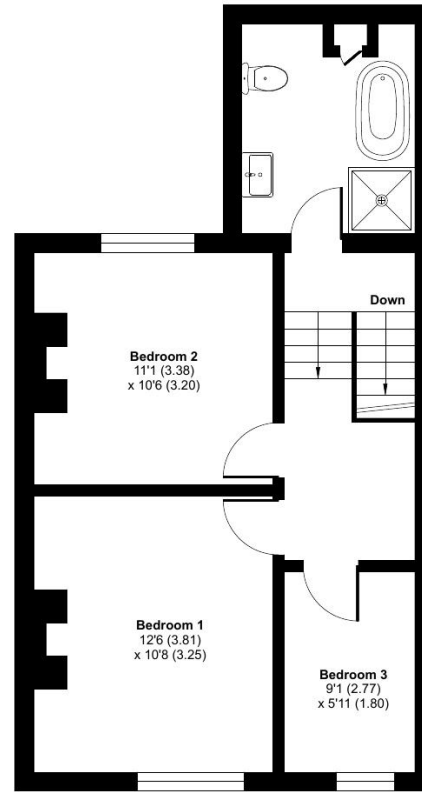
Outside, adjacent to the property is a courtyard, currently laid to artificial lawn. Steps lead up to the remainder of the garden which is also laid to low maintenance artificial lawn, enclosed by low level fencing and mature trees. This area is ideal as a seating/alfresco dining space with views across the roof tops.

Tenure – Freehold  
Council Tax Band - TBC





GROUND FLOOR



FIRST FLOOR

## Barewell Road, Torquay, TQ1

Approximate Area = 1000 sq ft / 92.9 sq m

Outbuilding = 20 sq ft / 1.8 sq m

Total = 1020 sq ft / 94.7 sq m

For identification only - Not to scale



**Certified  
Property  
Measurer**

Floor plan produced in accordance with RICS Property Measurement Standards incorporating International Property Measurement Standards (IPMS2 Residential). © nrichcom 2023. Produced for Ashtons Complete (Complete Property). REF: 1047432



Our note. For clarification we have prepared these sales particulars as a general guide and have not carried out a detailed survey nor tested the services, appliances or fittings. Room sizes should not be relied upon for carpets or furnishings. If there are any important matters which are likely to affect your decision to buy, please contact us before viewing this property. These particulars, whilst believed to be accurate, are set out as a general outline only for guidance and do not constitute any part of an offer or contract. Intending purchasers should not rely on them as statements of representation of fact, but must satisfy themselves by inspection or otherwise as to their accuracy. No person in the employment of Complete Property Services has the authority to make or give any representation or warranty in respect of the property.

**SKETCH PLAN FOR ILLUSTRATIVE PURPOSES ONLY.** All measurements and sizes and locations of walls, doors, window fittings and appliances are shown conventionally and are approximate only and cannot be regarded as being a representation either by the Seller or his Agent. We hope that these plans will assist you by providing you with a general impression of the layout of the accommodation. The plans are not to scale nor accurate in detail. © Unauthorised reproduction prohibited.

As part of the service we offer we may recommend ancillary services to you which we believe will help with your property transaction. We wish to make you aware that should you decide to proceed we will receive a referral fee. This could be a fee, commission, payment or other reward. We will not refer your details unless you have provided consent for us to do so. You are not under any obligation to provide us with your consent or to use any of these services, but where you do you should be aware of the following referral fee information. You are also free to choose an alternative provider. To find out more about this, please speak to a member of the team.



## the location...

Torquay is a seaside resort town on the English Channel in Devon, Southwest England. Known for beaches such as Babbacombe and cliffside Oddicombe, its coastline is nicknamed the English Riviera. Torquay Harbour near the town centre offers shops, cafes and a marina.

### Shopping

Late night pint of milk: Sainsbury's Local 0.4 miles

Supermarket: Asda 1.4 miles

Town Centre: Torquay 2.5 miles

### Relaxing

Beach: Babbacombe Beach 1.3 miles

Tessier Gardens: 0.5 miles

Riviera International Centre: 1.8 miles

Torquay Golf Club: 0.5 miles

### Travel

Train station: Torquay 2 miles

Main travel link: A380 2.3 miles

Airport: Exeter Airport 24.5 miles

### Schools

Torquay Girls'/Boy's Grammar Schools: 1.7 miles

St Margaret's Primary Academy: Approx 50 ft

The Spires College: 0.6 miles

Warberry Church of England Academy: 1.4 miles

Please check Google maps for exact distances and travel times.

Property postcode: **TQ1 4PA**





The Property  
Ombudsman

Need a more complete  
picture? Get in touch with  
your local branch...

Tel [01626 870 870](tel:01626870870)  
Email [teignmouth@completeproperty.co.uk](mailto:teignmouth@completeproperty.co.uk)  
Web [completeproperty.co.uk](http://completeproperty.co.uk)

Complete  
13 Wellington Street  
Teignmouth  
Devon  
TQ14 8HW

Are you selling a property too? Call us to get a set of property details like these...

selling

letting

land &  
new homes

signature  
homes

complete.