

Love Homes



Durham Close, Flitwick, Bedfordshire MK45 1UR

The property has been thoughtfully extended and enhanced by the current owners to offer spacious and versatile living spaces. As you step inside, you're greeted by a generous entrance hall featuring a convenient walk-in cloaks storage cupboard. The 15'8" living room boasts bi-fold doors that seamlessly connect to a sprawling 25'1" x 16'9" open-plan kitchen, dining, and family room, which also enjoys the luxury of bi-fold doors leading to the rear garden.

In addition to the main living areas, there is a practical home office or kids' den, a dedicated laundry room, and a downstairs cloakroom, ensuring that the house caters to modern family life. Ascending to the first floor you'll find four spacious double bedrooms, including an en-suite shower room and family bathroom.



This property is presented by Duncan Stead - a Love Homes property expert with over 25 years' experience.

Find out more about this property by scanning the QR code.



0.8m

Tenure: Freehold



4



3



2

Council Tax: D

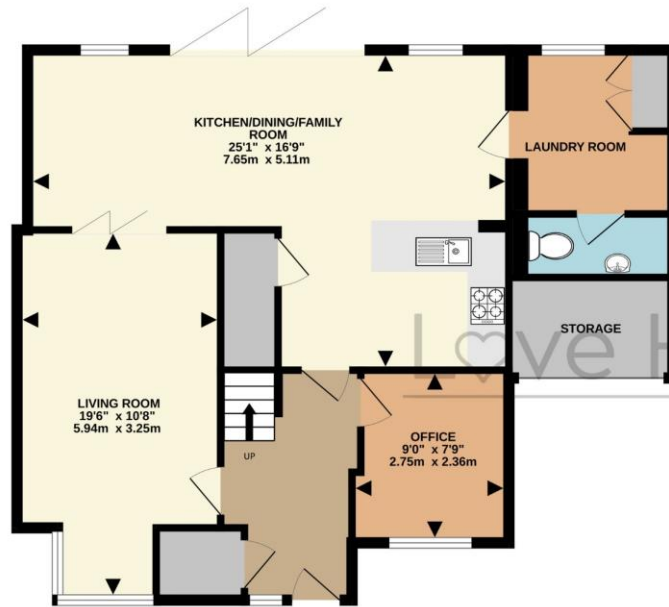




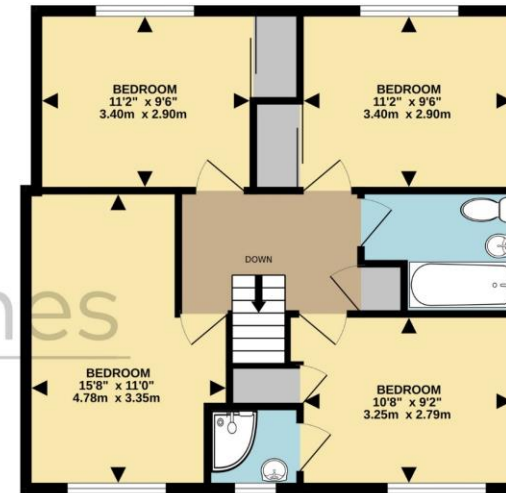
"For us, when we bought Durham Close a few years ago it was all about the location and the potential. Being within walking distance to the train station and schools was a big priority for us having previously lived in a small village. We've extended the property from a small 3 bed house to a much more versatile family home with four double bedrooms and a huge open plan kitchen/dining/family room with wide opening bi-fold doors to the garden and useful home office for the days we work from home. Finishing off the kitchen was the last job however timescales and circumstances have meant that a new owner will now have an opportunity to finish it off to suit their own taste and style".



GROUND FLOOR
841 sq.ft. (78.1 sq.m.) approx.



1ST FLOOR
638 sq.ft. (59.3 sq.m.) approx.



Score	Energy rating	Current	Potential
92+	A		
81-91	B		
69-80	C		
55-68	D		
39-54	E		
21-38	F		
1-20	G		

EPC RATING TO FOLLOW



These particulars are set out as a general outline in accordance with the Property Misdescriptions Act (1991) only for the guidance of intending purchasers or lessees, and do not constitute any part of an offer or contract. Details are given without any responsibility, and any intending purchasers, lessees or third parties should not rely on them as statements or representations of fact but must satisfy themselves by inspection or otherwise as to the correctness of each of them. We have not carried out a structural survey and the services, appliances and specific fittings have not been tested. All photographs, measurements, floor plans and distances referred to are given as a guide only and should not be relied upon for the purchase of carpets or any other fixtures or fittings. Gardens, roof terraces, balconies and communal gardens as well as tenure and lease details cannot have their accuracy guaranteed for intending purchasers. Lease details, service ground rent (where applicable) are given as a guide only and should be checked and confirmed by your solicitor prior to exchange of contracts. No person in the employment of Love Homes has any authority to make any representation or warranty whatever in relation to this property. Purchase prices, rents or other prices quoted are correct at the date of publication and, unless otherwise stated, are exclusive of VAT. We retain the copyright in all advertising material used to market this Property. All information is as advised by the seller and subject to change. Council tax bands can be subject to change by the local council.

5 The Russell Centre, Coniston Road, Flitwick, MK45 1QY
Tel: 01525 713111

Email: flitwick@lovehomes.uk

www.lovehomes.uk



Love Homes