



## IMMACULATE 4 BEDROOM, 2 BATHROOM HOUSE

Johns Close, Ashford, Surrey, TW15 1BD

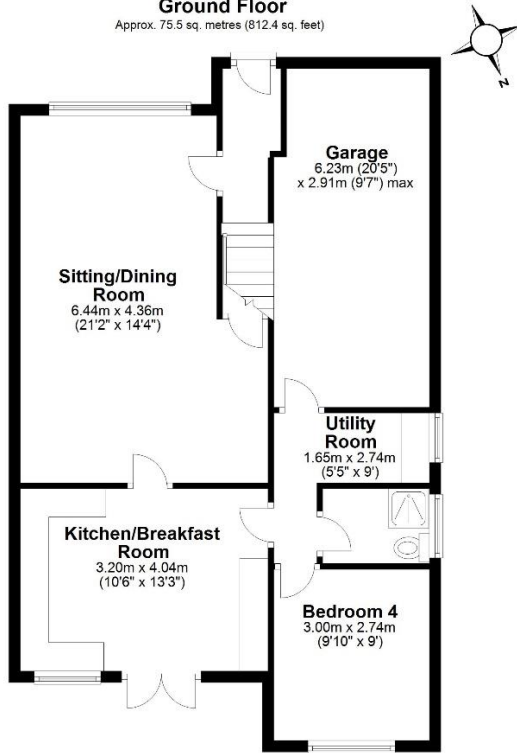
Indulge in suburban elegance with this captivating semi-detached residence. Offering not just a house but a lifestyle, this property boasts 4 generous bedrooms, 2 exquisitely appointed bathrooms, and an open plan sitting/dining room. The heart of the home is a fitted kitchen with breakfast bar, complemented by a convenient utility room. As you step outside, you'll be entranced by the meticulously landscaped garden. A symphony of natural beauty, it features an extensive deck, perfect for al fresco dining, an inviting patio area for relaxation, lush lawns for endless play, a charming summer house and a practical shed for storage. Ensuring both convenience and luxury, this property also offers the convenience of a single garage and off-road parking for three cars, all nestled within the tranquility of a private road. A viewing is highly recommended.



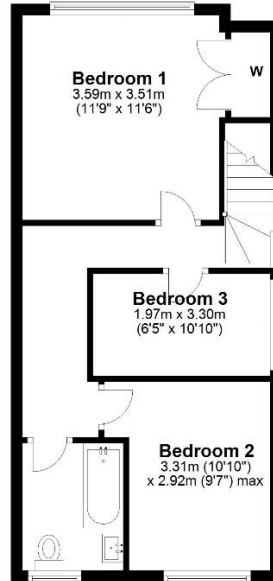
lewis  
white



**Ground Floor**  
Approx. 75.5 sq. metres (812.4 sq. feet)



**First Floor**  
Approx. 42.1 sq. metres (452.6 sq. feet)



Total area: approx. 117.5 sq. metres (1265.1 sq. feet)

Produced by Lewis White, not to scale and indicative only  
Plan produced using PlanUp.



Council tax band: E EPC: D

Lewis White Estate Agents, Somers House, Linkfield Corner, RH1 1BB. 01737 245779 info@lewiswhite.net www.lewiswhite.net