



CENTURY 21
Ealing

GUIDE PRICE £672,500
ORCHARD AVENUE, TW5



PROPERTY
ORCHARD AVENUE, TW5

5 bedroom semi-detached family home



Rare opportunity to grab! Century 21 are delighted to illustrate this well presented five bedrooms semi-detached family home.

This spacious property boasts 2 reception rooms perfect to entertain the family/ guest with adequate dining space. It also has guest WC, fully fitted kitchen, side extended ground floor bedroom with en-suite and utility room.

To the first floor you are welcomed to exceptional three double size bedrooms with fitted wardrobes, a generous size single room which share a family bathroom.

The garden offers a lawn with a decked area, whilst the front driveway offers ample parking space for three cars.

Situated within close proximity of Hounslow Train Station, bus station, including all your convenient amenities near-by, it is also a short drive away from the M4, M25.





PROPERTY
ORCHARD AVENUE, TW5

At a glance:

- off - street parking
- gas central heating
- rear garden

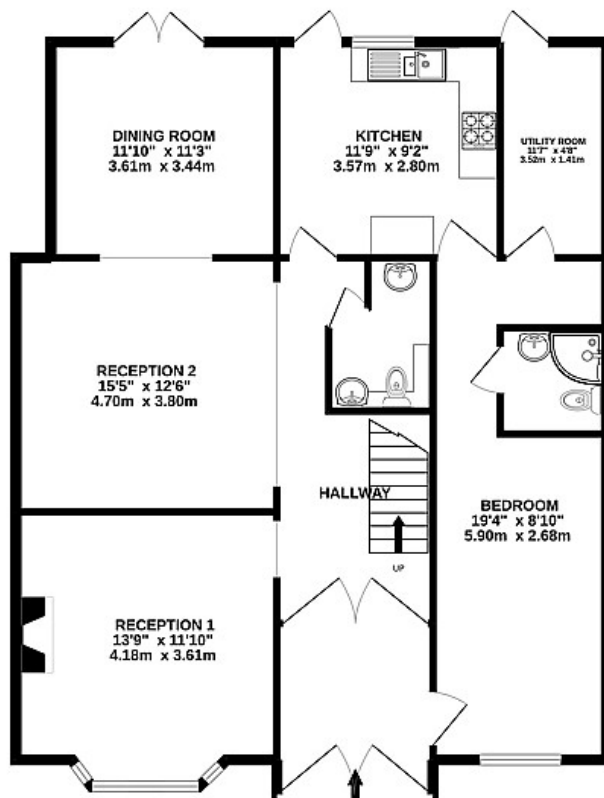
Communications

ORCHARD AVENUE, TW5

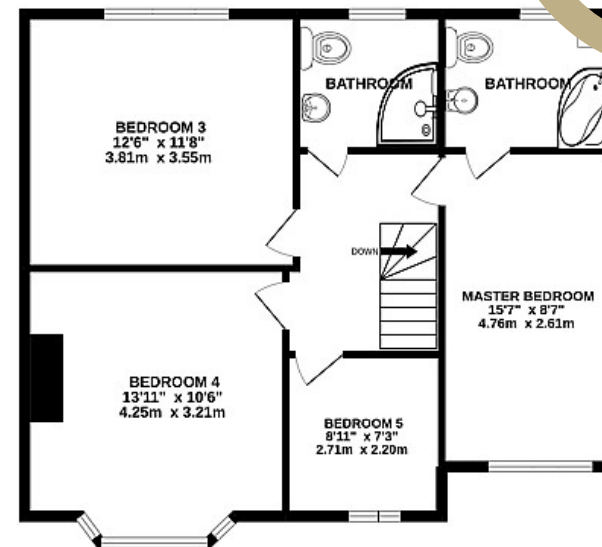
Utilities:

Internal Area:

GROUND FLOOR
1163 sq.ft. (108.1 sq.m.) approx.



1ST FLOOR
794 sq.ft. (73.7 sq.m.) approx.



Energy Efficiency Rating		Current	Potential
Very energy efficient - lower running costs			
(92-100) A			
(81-91) B			
(69-80) C			
(55-68) D			
(39-54) E			
(21-38) F			
(1-20) G			
Not energy efficient - higher running costs			
		0	0
England, Scotland & Wales		EU Directive 2002/91/EC	

TOTAL FLOOR AREA: 1957 sq.ft. (181.8 sq.m.) approx.

Whilst every attempt has been made to ensure the accuracy of the floorplan contained here, measurements of doors, windows, rooms and any other items are approximate and no responsibility is taken for any error, omission or mis-statement. This plan is for illustrative purposes only and should be used as such by any prospective purchaser. The services, systems and appliances shown have not been tested and no guarantee as to their operability or efficiency can be given.
Made with Metropix ©2022



CENTURY 21
Ealing

CENTURY 21
Ealing

12 Central Parade, Heston, TW5 0LQ

T: 020 4529 5646
E: ealing@century21uk.com