

Hartland, Skelmersdale, WN8 6QE



Sale : £95,000

Offered for sale with no chain, this four bedroom mid terraced house, is an ideal investment or first time buy for a growing family. The living space is a good size, with down stairs WC, lounge and dining kitchen to the ground floor and four bedrooms plus bathroom to the first floor. There is an enclosed garden to the rear and the property is close to local schools and bus routes. Viewings are now being arranged, contact us today to book your early appointment.

Entrance Hallway

Entrance door and window to the front, staircase to the first floor and central heating radiator.

WC

Low level WC, wash hand basin, window to the front.

Lounge

Large lounge, with UPVC double glazed windows to the front and side. Central heating radiator.

Dining Kitchen

Wall and base units, UPVC double glazed window and door to the rear and central heating radiator.

Landing

Access to all first floor bedrooms, window to the front.

Bedrooms 1-4

All bedrooms have UPVC double glazed window and central heating radiator.

Bathroom

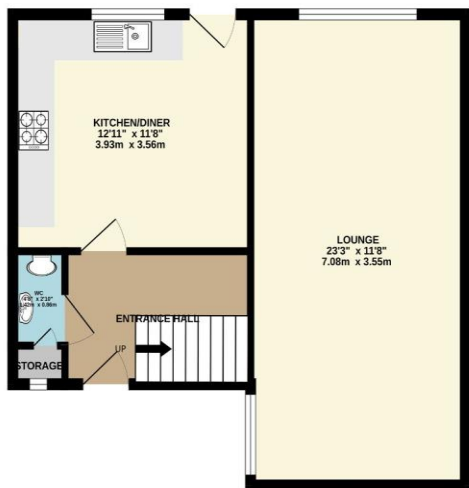
Low level WC, wash hand basin and panel bath. UPVC double glazed window.

Exterior

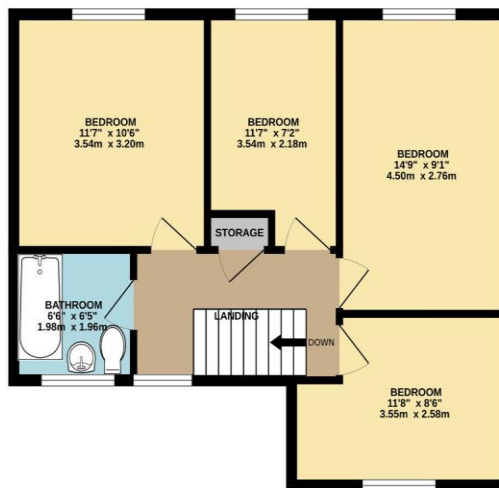
Enclosed garden to the rear.



GROUND FLOOR
506 sq.ft. (47.0 sq.m.) approx.

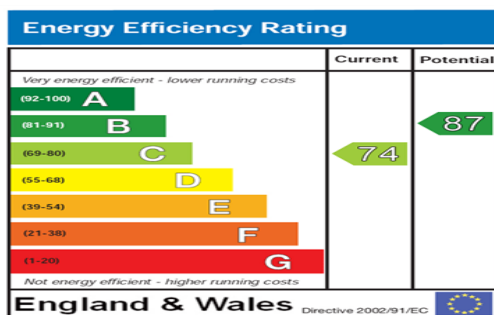


1ST FLOOR
542 sq.ft. (50.4 sq.m.) approx.



TOTAL FLOOR AREA : 1048 sq.ft. (97.4 sq.m.) approx.

Whilst every attempt has been made to ensure the accuracy of the floorplan contained here, measurements of doors, windows, rooms and any other items are approximate and no responsibility is taken for any error, omission or mis-statement. This plan is for illustrative purposes only and should be used as such by any prospective purchaser. The services, systems and appliances shown have not been tested and no guarantee as to their operability or efficiency can be given.
Made with Metropix ©2023



The energy efficiency rating is a measure of the overall efficiency of a home. The higher the rating the more energy efficient the home is and the lower the fuel bills will be.