



CHALET A5 CAMBER SANDS HOLIDAY PARK,
LYDD ROAD, CAMBER, EAST SUSSEX, TN31 7RT

ANDERSON
 HACKING

CHALET A5, CAMBER SANDS HOLIDAY PARK, CAMBER, EAST SUSSEX, TN31 7RT

GUIDE PRICE £48,000

A well presented 2 bedroom chalet bungalow benefitting from a quiet tucked away position in the Camber Sands Holiday Park. The property is in walking distance of all the park amenities and also being within close proximity to the famous Camber Sands Beach.

- Entrance Hall
- Open Plan Living Room
- Kitchen
- Shower Room /WC
- 2 Double Bedrooms
- Communal Gardens
- Off Street Car Parking
- Quiet Location
- 5 minutes Walk of Camber Sands Beach

Chalet A5 is a tucked away 2 bedroom chalet situated within Camber Sands Holiday Park that offers use of the chalet throughout the year. The chalet has been refurbished by the current owners and now presents a fabulous opportunity to let out as a holiday chalet. The property is offered in good condition throughout, with all fixtures and fittings included as part of the sale. The Chalet is located in a quiet location while benefiting from all the park amenities which are within a five minutes walk. The chalet looks over open communal lawn area ideal for sitting out in while nearby is the famous Camber Sands beach a short walk away. The Park offers a range of activities, entertainment and facilities including cycle hire, four heated indoor pools with flume, crazy golf, high wire walkways, kids trampolines, Showbar, The Boathouse Bar and Restaurant and wet outdoor play area.





Situation: Chalet A5 is situated within the Parkden Resorts, Camber Sands Holiday Park with easy access of the beach at Camber. Camber village has a number of cafes, two general stores, a post office and two public houses/restaurants, whilst approximately 4 miles away is the ancient Cinque Ports town of Rye, with its pretty cobbled streets and period buildings that offer shops, recreational and cultural facilities. The historic Old Town of Hastings is 16 miles away with its seafront and promenade, whilst inland are the market towns of Tenterden with its tree lined high street and Ashford with its large McArthur Glen designer outlet retail park. Leisure activities in the area include a local thriving tennis, sailing, and links golf clubs as well as opportunities for riding, kite surfing on the nearby Camber Sands Beach and walking in the surrounding countryside.

Travel and Transport: Rye train station, approximately 3.5 miles distant, offers direct links to Hastings and Brighton as well as the high-speed service from Ashford to London St. Pancras (with Rye to London St. Pancras 1hr 8 minutes), and link to the Eurostar trains from Ashford International. The M20 can be joined at Ashford via the A259 and A2070 with connections to the M25, Eurotunnel and Dover Ferry Port.



General Information:

Services: Mains Water, Mains Drainage, Mains Electricity,

Ground Rent Costs 2024: £5,681.42 per annum

Water Charge 2024: £238.44

Council Tax: Band A

Tenure: Leasehold, 50 years lease from 1st December 2006

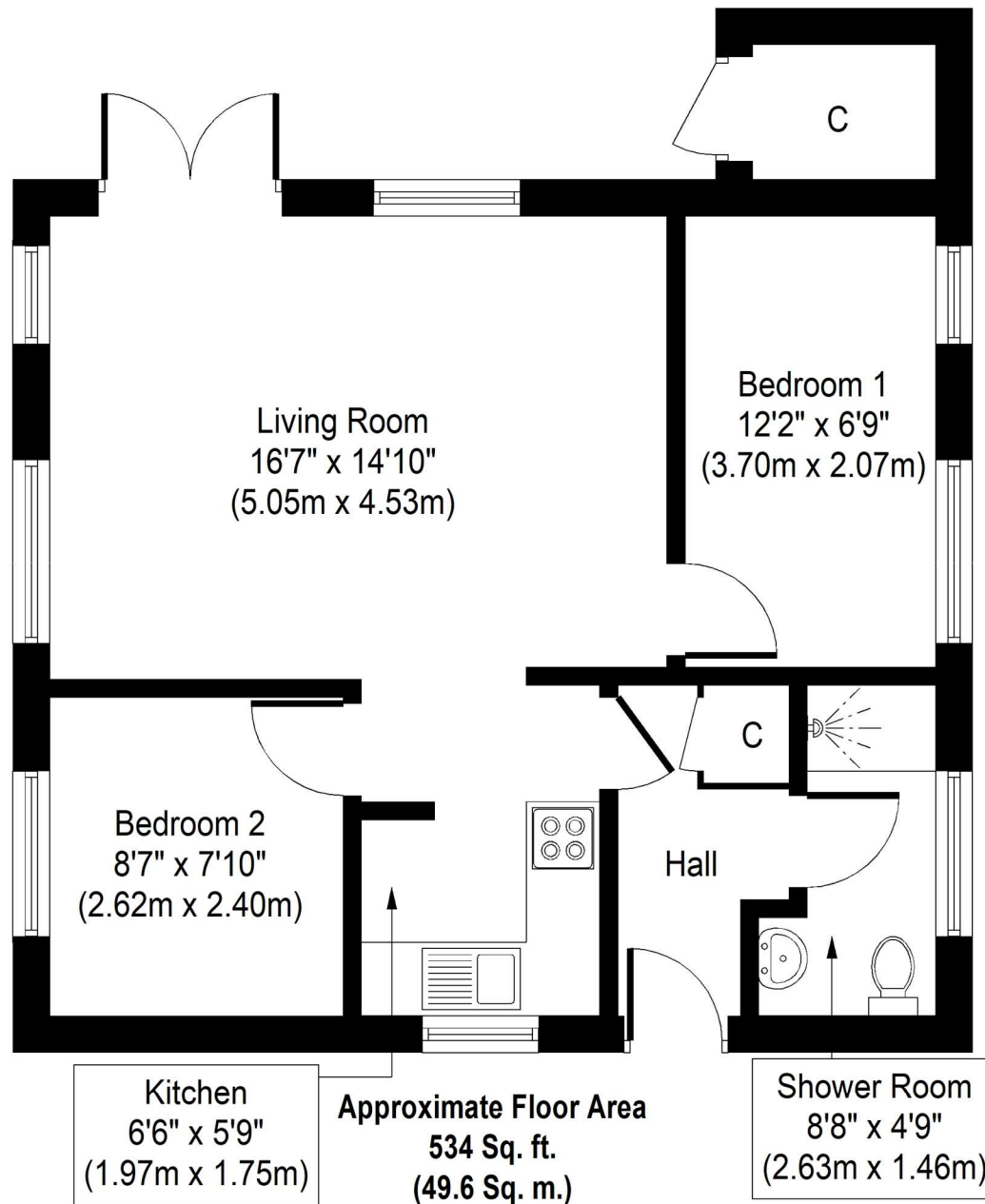
Mobile Coverage: 4G with Vodafone, O2, 3G with 3Mobile, EE, Virgin

Local Authority: Rother District Council. Tel: 01424 787000



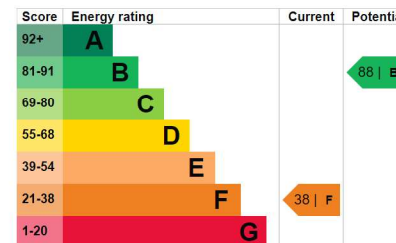
Viewing: Strictly by appointment with agents – Anderson Hacking Ltd

Directions : From Rye head out on A259 sign posted Dover. Proceed for 1 mile then turn right onto Camber Road. Proceed for further 3 miles into Camber, continue along New Lydd Road through Camber and the entrance to Camber Sands Holiday Park is on the left hand side at the end of the village.



Whilst every attempt has been made to ensure the accuracy of the floor plan contained here, measurements of doors, windows, rooms and any other items are approximate and no responsibility is taken for any error, omission, or mis-statement. This plan is for illustrative purposes only and should be used as such by any prospective purchaser or tenant. The services, systems and appliances shown have not been tested and no guarantee as to their operability or efficiency can be given.

Copyright V360 Ltd 2022 | www.houseviz.com



Agents Notes:

Prospective purchasers are advised to conduct their own investigations through their own solicitors and surveyors. These details should be considered only as an indication to assist when deciding whether to view or not. While we endeavour to make our sales particulars fair, accurate and reliable, they are only a general guide to the property and, accordingly, if there is any point which is of particular importance to you, please contact Anderson Hacking, and we will endeavour to check the position for you. Equipment and the electrical circuits have not been tested, nor the heating, plumbing or drainage systems. Therefore we strongly advise prospective buyers to commission their own survey or service reports before finalising their offer to purchase.

Measurements given are approximate room sizes only, and are intended as general guidance. You must verify the dimensions carefully before ordering carpets or any built-in furniture. Purchasers should check that the land offered is the 'whole or part of' the parcel indicated in the land registry plan. Prospective purchasers are advised to check the boundaries as indicated against the established boundaries on the ground and any land registry documents before proceeding.

Under Money Laundering Regulations, Intending purchasers will be asked to produce identification documentation at a later stage and we would ask for your co-operation in order that there will be no delay in agreeing the sale.

These particulars are issued in good faith but do not constitute representations of fact or form part of any offer or contract. The matters referred to in these particulars should be independently verified by prospective buyers or tenants.

Particulars Dated: September 2024

Photographs Dated: September 2024

**ANDERSON
HACKING**

Tel : 01797 224852

www.andersonhacking.com