



Wilkins Way, Wantage

Wantage

Simpsons

The Proactive Agent

£640,000



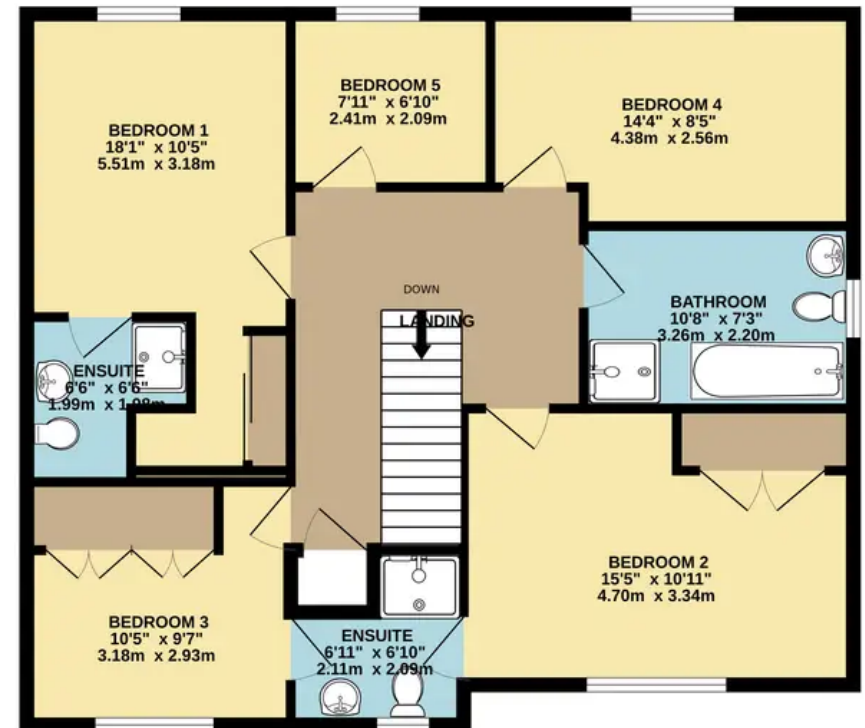
SCAN THE
QR CODE
FOR DETAILS



GROUND FLOOR
903 sq.ft. (83.9 sq.m.) approx.



1ST FLOOR
889 sq.ft. (82.6 sq.m.) approx.



TOTAL FLOOR AREA : 1792 sq.ft. (166.5 sq.m.) approx.

Whilst every attempt has been made to ensure the accuracy of the floorplan contained here, measurements of doors, windows, rooms and any other items are approximate and no responsibility is taken for any error, omission or mis-statement. This plan is for illustrative purposes only and should be used as such by any prospective purchaser. The services, systems and appliances shown have not been tested and no guarantee as to their operability or efficiency can be given.

Made with Metropix ©2023

Wilkins Way

Wantage, Wantage

KINGSGSGROVE DEVELOPMENT This larger than average family home built by St Modwen Homes benefits from an open plan 'lifestyle room' incorporating a superb kitchen, dining/family room area. There are two further reception areas including a home office/study and sitting room. Council Tax band: D

Tenure: Freehold

- Superb family home with large bi-fold doors opening into the rear garden.
- Five bedrooms including a master bedroom with en-suite shower room.
- Guest bedroom with second en-suite shower room.
- Downstairs WC and independent utility room.
- Built by St Moden Homes to the Almond design.



SCAN THE
QR CODE
TO BOOK
YOUR VIEWING



