

Compton

Clerkenwell

12-16 Clerkenwell Road
EC1M 5PQ

Fully fitted, plug and play, office
available in the heart of
Clerkenwell on a sublease until
August 2027.

For Rent
5,012 ft²

020 7101 2020
compton.london



Compton

Clerkenwell

12-16 Clerkenwell Road
EC1M 5PQ

Fully fitted, plug and play, office available in the heart of Clerkenwell on a sublease until August 2027.

For Rent

5,012 ft²



Location

Ideally nestled between the West End, the City, King's Cross and Old Street, Clerkenwell has for centuries been one of London's most vital and creative neighbourhoods. It has been the place for coffee shop intrigue and manufacturing innovation, craftsmanship and carousing, radical ideas and groundbreaking architecture.

Compton

Clerkenwell

12-16 Clerkenwell Road
EC1M 5PQ

Fully fitted, plug and play, office
available in the heart of
Clerkenwell on a sublease until
August 2027.

For Rent
5,012 ft²



Compton

Clerkenwell

12-16 Clerkenwell Road
EC1M 5PQ

Fully fitted, plug and play, office
available in the heart of
Clerkenwell on a sublease until
August 2027.

For Rent
5,012 ft²



Compton

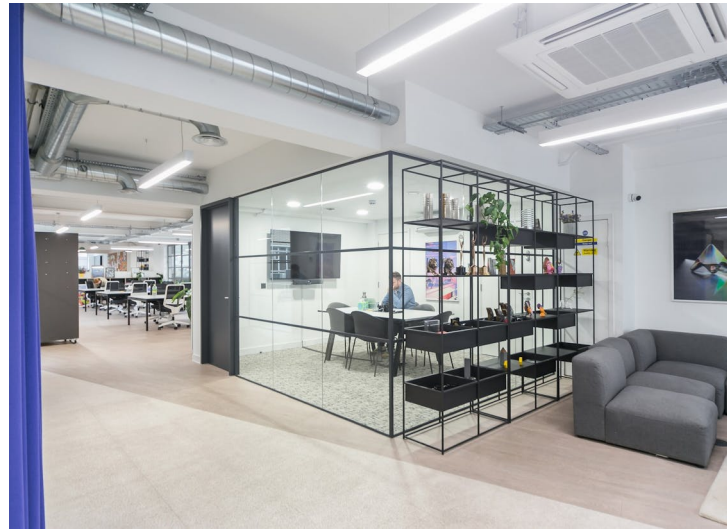
Clerkenwell

12-16 Clerkenwell Road
EC1M 5PQ

Fully fitted, plug and play, office
available in the heart of
Clerkenwell on a sublease until
August 2027.

For Rent

5,012 ft²



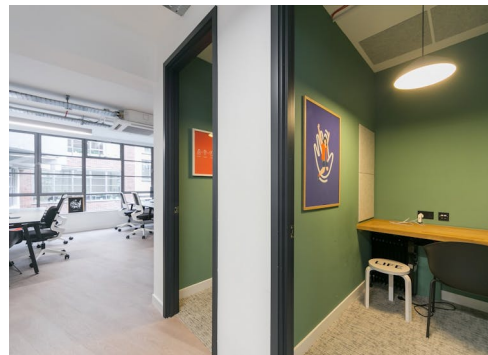
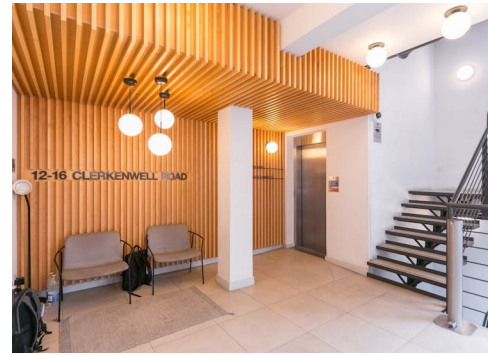
Compton

Clerkenwell

12-16 Clerkenwell Road
EC1M 5PQ

Fully fitted, plug and play, office
available in the heart of
Clerkenwell on a sublease until
August 2027.

For Rent
5,012 ft²



Compton

Clerkenwell

12-16 Clerkenwell Road
EC1M 5PQ

Fully fitted, plug and play, office available in the heart of Clerkenwell on a sublease until August 2027.

For Rent

5,012 ft²

Amenities

- Fully Fitted CAT A+
- Available on a sublease direct from the tenants
- Plug and Play- ready to move in straightaway
- 56 fixed desks
- Kitchenette and breakout area
- 4 internal meeting rooms
- 2 phone booths
- Demised WC's & Showers
- Air conditioning installed

Description

The 1st Floor at 12-16 Clerkenwell Road is being offered in a fully fitted condition, with 56 desks in situ, 4 meeting rooms and 2 phone/call booths. The space also boasts a fully fitted kitchen, breakout area and demised WCs and showers. In excellent condition, this unit is the ideal space for a tenant to move straight into with little amendments needed.

The unit is available on a sublease until August 2027.

Compton

Clerkenwell

12-16 Clerkenwell Road
EC1M 5PQ

Fully fitted, plug and play, office
available in the heart of
Clerkenwell on a sublease until
August 2027.

For Rent

5,012 ft²

Content

Watch the film



View on Website



Compton

Clerkenwell

12-16 Clerkenwell Road
EC1M 5PQ

Fully fitted, plug and play, office available in the heart of Clerkenwell on a sublease until August 2027.

For Rent

5,012 ft²

Floor Areas & Outgoings

The accommodation comprises the following areas:

Name	sq ft	Rent (sq ft)	Rates Payable (sq ft)	Service Charge (sq ft)	Total /sq ft	Total month	Total year	Availability
1st	5,012	£59.50	£23.23	£8.30	£91.03	£38,020.20	£456,242.36	Available

Compton

Contact Us

All appointments to view must be arranged via sole agents, Compton, through —

Andy Gilbert
ag@compton.london
07833993714

Samantha-Jo Roberts
sr@compton.london
07704343032

