



Flat 1, Palatine Road, Blackpool

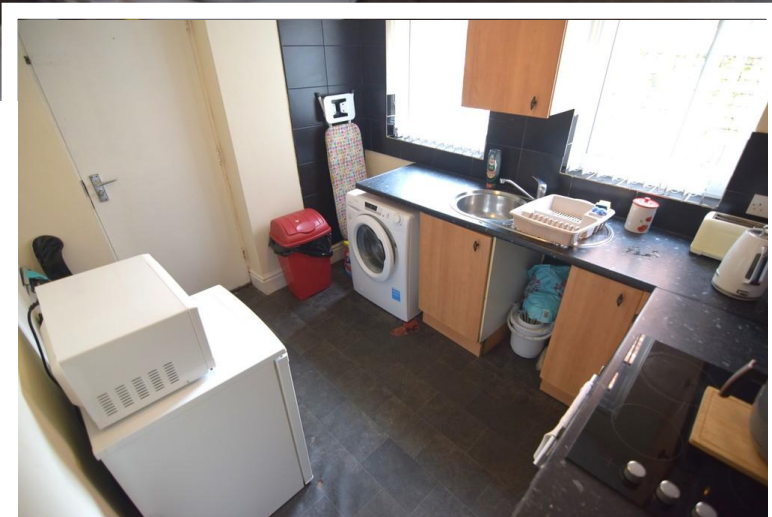
Lancashire, FY1 4DS

- **LARGE 2 BEDROOM GROUND FLOOR FLAT**
- **WELL PRESENTED THROUGHOUT**
- **MODERN SHOWER ROOM**
- **DOUBLE GLAZING**

£525 PCM

EPC Rating '41'





Property Description

Large two bedroom ground floor flat, situated in a convenient location close to shops, schools, transport links and other local amenities.

Accommodation comprising entrance hallway, lounge, shower room, two bedrooms and kitchen. Externally with an enclosed shared communal yard. The property also benefits from storage heating and double glazing.

1 months rent in advance and 5 weeks rent as deposit.

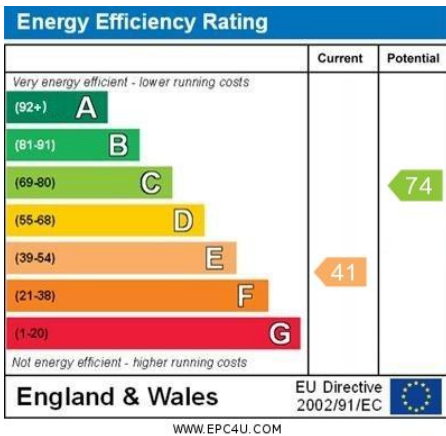


LOUNGE
12' 8" x 11' 5" (3.86m x 3.48m)

BEDROOM
10' 9" x 9' 4" (3.28m x 2.84m)

BEDROOM 2
12' 1" x 10' 9" (3.68m x 3.28m)

KITCHEN
9' 6" x 7' 6" (2.9m x 2.29m)



21 Counce Street
Blackpool
Lancashire
FY1 3LA

www.moveholmes.co.uk
01253 928200
enquiries@moveholmes.co.uk

Agents Note: Whilst every care has been taken to prepare these sales particulars, they are for guidance purposes only. All measurements are approximate and are for general guidance purposes only and whilst every care has been taken to ensure their accuracy, they should not be relied upon and potential buyers are advised to recheck the measurements