

# Highfield

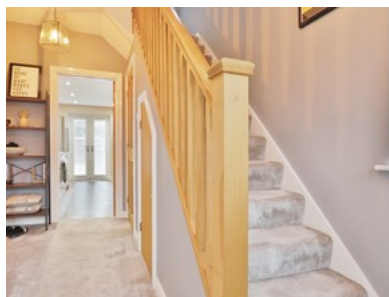
## £220,000



**beercocks**  
valuing people, not just houses



- ✔ Gorgeous Three Bed Semi-detached House
- ✔ Stunningly Decorated Throughout
- ✔ Generous Plot With Private Huge Garden
- ✔ Ideal For Families
- ✔ Gardens & Off-road Parking
- ✔ Freehold
- ✔ Council Tax Band C
- ✔ Epc Rating D



Bedroom  3 Bathroom  1 Reception  2

Fixed Price

**£220,000**