



MILE



MILE



MILE



MILE



MILE

Mortimer Road, London NW10 £6,000 pcm

Prime location in Kensal Rise with high end luxury living in this stunning four bedroom house

This stunning family home, yet to be occupied by the current owners, has been meticulously designed and extended, with no expense spared to provide amazing living space across 1778 sq ft.

The ground floor has been well considered for a family dwelling, with a generous 14ft living room, WC, separate utility area, and a show stopping 27 ft kitchen diner.

- Four bedroom home
- High end finish
- Stunning condition
- Walking distance from tube
- Short walk to Chamberlayne Road
- Home office
- 45 ft private garden
- 27ft kitchen diner
- Separate utility area
- Close to shops and transport

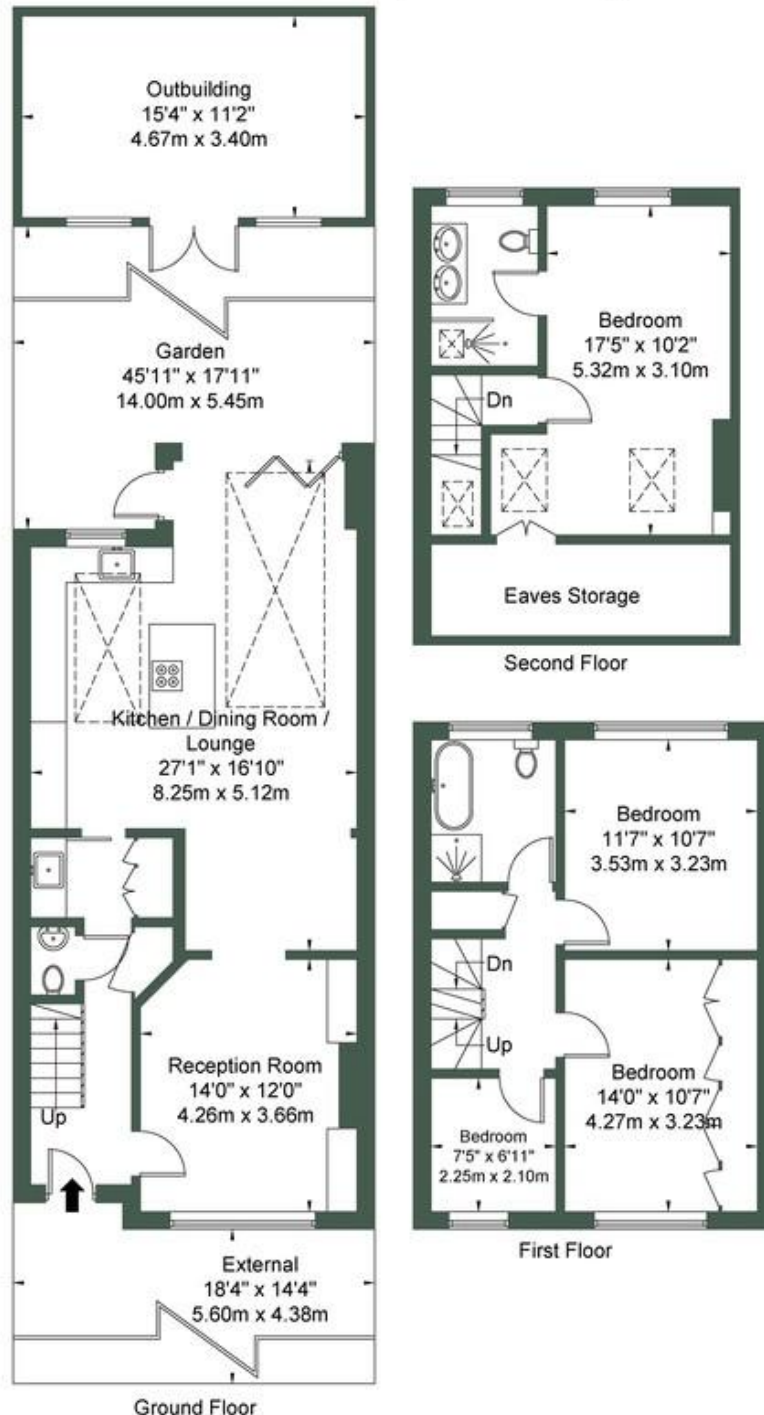
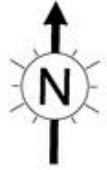
Mortimer Road NW10 5SN

Approx Gross Internal Area = 137.7 sq m / 1483 sq ft

Outbuilding = 19.7 sq m / 212 sq ft

Eaves = 7.8 sq m / 83 sq ft

Total = 165.2 sq m / 1778 sq ft



Ref

Copyright



The Floor plan is not to scale and measurements and areas shown are approximate and therefore should be used for illustrative purposes only. The plan has been prepared in accordance with the RICS code of Measuring Practice and whilst we have confidence in the information produced it must not be relied on. If there is any aspect of particular importance, you should

MONEY LAUNDERING REGULATIONS 2003: Intending purchasers will be asked to produce identification documentation at a later stage and we would ask for your co-operation in order that there will be no delay in agreeing the sale.

General: While we endeavour to make our sales particulars fair, accurate and reliable, they are only a general guide to the property and, accordingly, if there is any point which is of particular importance to you, please contact the office and we will be pleased to check the position for you, especially if you are contemplating travelling some distance to view the property.

Measurements: These approximate room sizes are only intended as general guidance. You must verify the dimensions carefully before ordering carpets or any built-in furniture.

Services: Please note we have not tested the services or any of the equipment or appliances in this property, accordingly we strongly advise prospective buyers to commission their own survey or service reports before finalising their offer to purchase.