



Stainer Road, Borehamwood

Guide Price **£539,000**

L&Hresidential
laminghope.com **sales & lettings**

Stainer Road

Borehamwood

An extended three bedroom end of terraced house with planning permission granted to build additional three bedroom house.

Council Tax band: D

Tenure: Freehold

- Extended three bedroom end of terrace house
- Three reception rooms & Utility room/conservatory
- Downstairs guest W.C.
- Detached double garage
- Large side and rear garden
- Westerly facing rear garden
- CHAIN FREE
- Off street parking for multiple cars
- Planning permission granted to build an additional three bedroom house



L&Hresidential
laminghope.com sales & lettings

Borehamwood - 0203 617 1333

Scott Magor

e scott@laminghope.com

t +44 7572 958 043



Property Details

L&H Residential are proud to bring to the market this well presented and extended end of terraced house offering impressive potential to extend to the side to create an additional dwelling or accommodation (stpp) located a short walk from local schools, shops and bus routes. The property comprises of three bedrooms, family bathroom, three reception rooms, utility room/conservatory, kitchen and a downstairs guest W.C. The property also benefits from a large rear garden and a 33ft wide side garden, off street parking for multiple cars, detached double garage and being sold CHAIN FREE.



L&Hresidential
laminghope.com sales & lettings

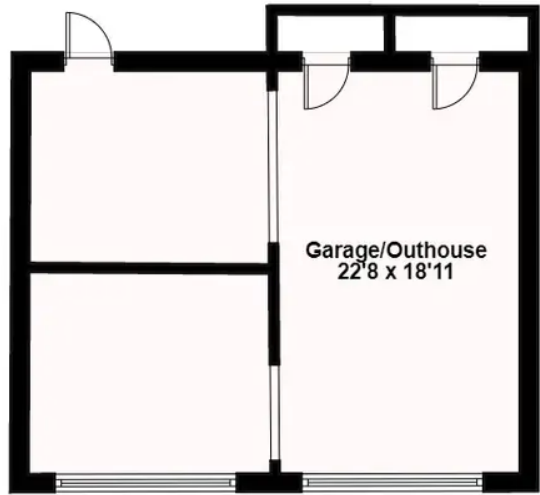
Borehamwood - 0203 617 1333

Scott Magor

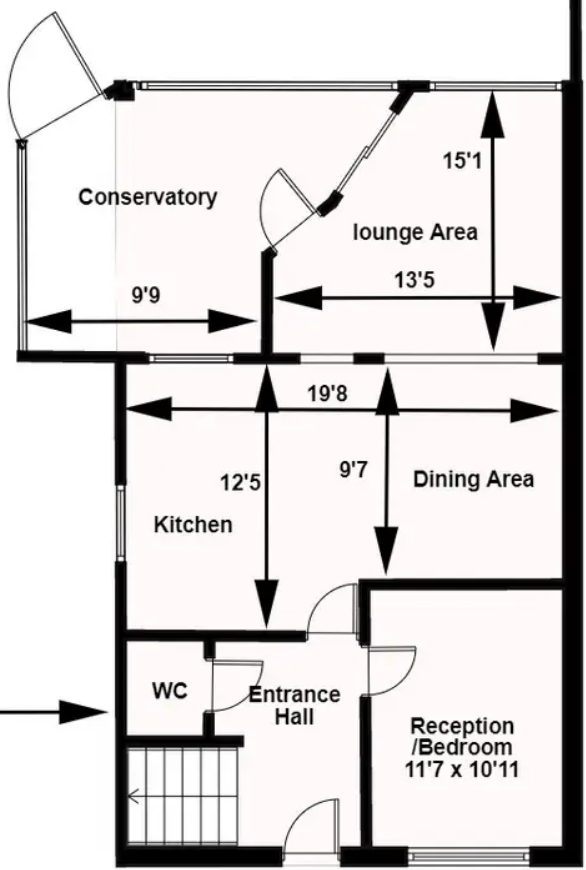
e scott@laminghope.com

t +44 7572 958 043

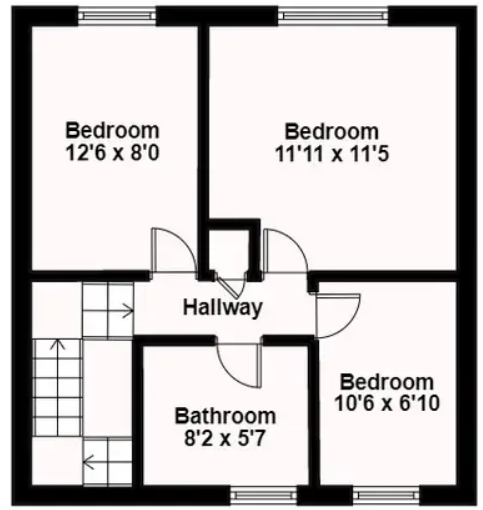




Outouse size
Approx 428'8 ft2
Approx 130.7 m2



Ground Floor
Approx 765.7 ft2



First Floor
Approx 416.3 ft2

Total House size
Approx 1181.10 ft2
Approx 359 m2

Width of plot
33ft approx
10m approx

WHERE TO FIND US

Borehamwood Branch:
12 Shenley Road,
Borehamwood,
Hertfordshire,
WD6 1DL

Telephone: 020 3617 1333
Email: enquiries@laminghope.com