



HINTON & DOWNES
residential

SALES, LETTINGS & MANAGEMENT

Letchford Terrace

Headstone Lane, Harrow HA3 6PB

- Two double bedroom
- End of terrace
- Brand newly refurbished
- Private garden

Asking Price Of **£450,000**

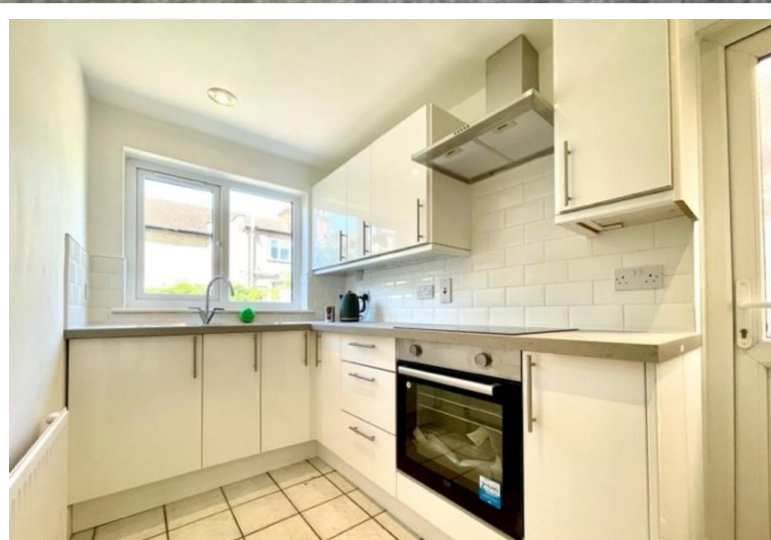
EPC Rating 'TBC'





Property Description

A BRAND NEWLY REFURBISHED TWO DOUBLE BEDROOM END OF TERRACED HOUSE conveniently located for access to Headstone Lane Overground Station, local bus routes and shops. The property has been finished to a good standard throughout and comprises; a spacious reception room with fitted shelving unit and log burner, a second reception room ideal to be used as a dining area, a brand new white gloss kitchen, a newly fitted bathroom with bath, overhead shower, W.C and basin and two large double bedrooms on the first floor. Off of the kitchen there is access to the private rear garden with access from the side of the property. The house further benefits from gas central heating and double glazed windows throughout. Internal inspection highly advised.







%epcGraph_c_1_325%

399 High Road
Harrow
Middlesex
HA3 6EL

www.hintonanddownes.co.uk
sales@hintonanddownes.com
0208 861 1066

Agents Note: Whilst every care has been taken to prepare these sales particulars, they are for guidance purposes only. All measurements are approximate are for general guidance purposes only and whilst every care has been taken to ensure their accuracy, they should not be relied upon and potential buyers are advised to recheck the measurements