



Lovely top floor one bedroom flat, set within this period property in a great location being close to Crouch Hill over ground and walking distance to Crouch End Broadway and Stroud Green Road. Property comprises of one double bedroom, reception room, fully fitted kitchen and bathroom with shower. Additional features of wooden floors, period fireplaces, Internal staircase for storage, sash windows allowing for plenty of light. and large loft with potential for conversion Transport links at Crouch Hill and Finsbury Park stations. Green spaces of The Parkland Walk and Finsbury Park close by. CHAIN FREE

**Crouch Hill, Crouch End, London, N4 4AJ**

**£435,000 Leasehold**

HOBARTS ESTATE AGENTS

23 Ferme Park Road, Stroud Green, London, N4 4DS

[stroudgreen@hobarts.co.uk](mailto:stroudgreen@hobarts.co.uk)

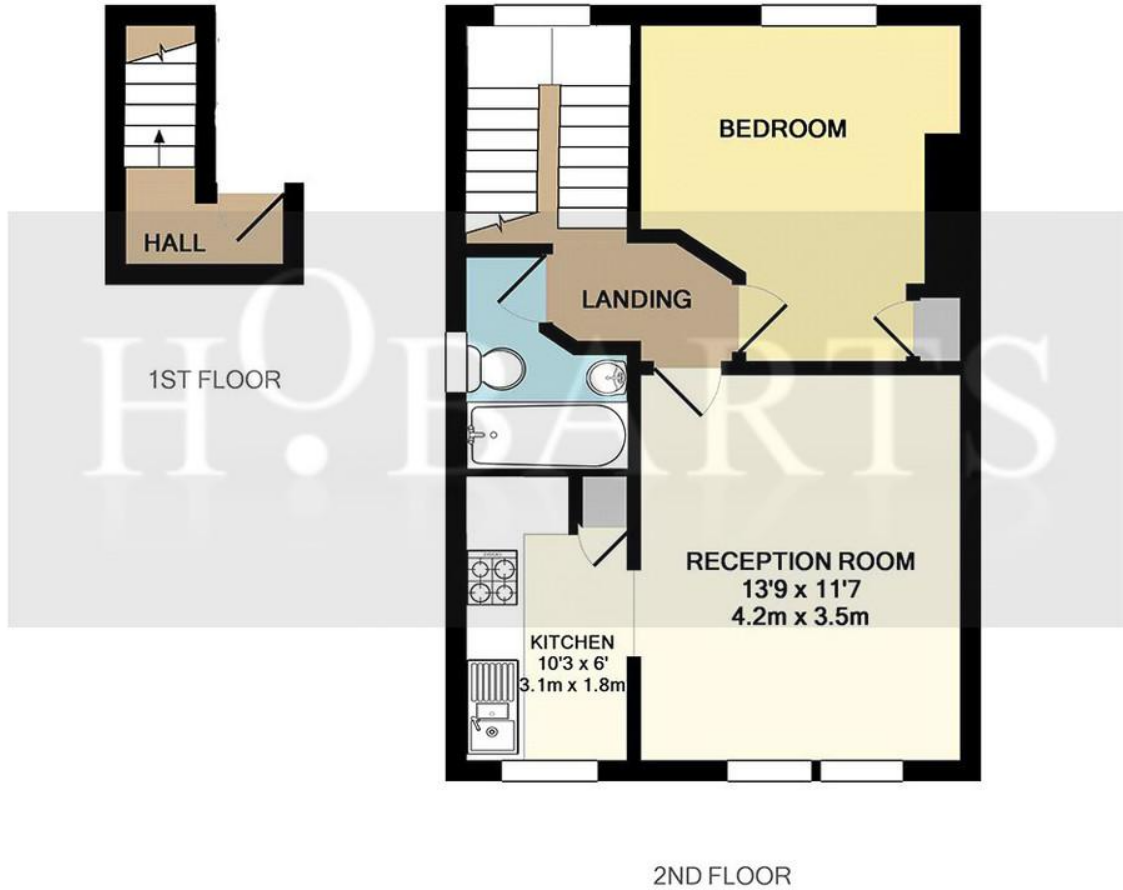
[www.hobarts.co.uk](http://www.hobarts.co.uk)

020 8342 9000



- One double bedroom
- Good sized fully fitted kitchen
- Wooden floors and period fireplaces
- Finsbury Park transport hub a short walk
- The Parkland Walk and Finsbury Park

- Spacious reception room
- Bathroom with shower
- Large loft
- Crouch End and Stroud Green Road shops and amenities close by
- Chain Free

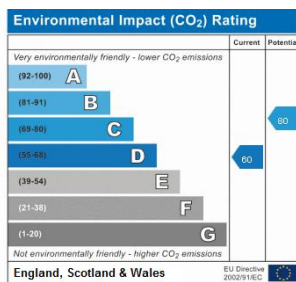
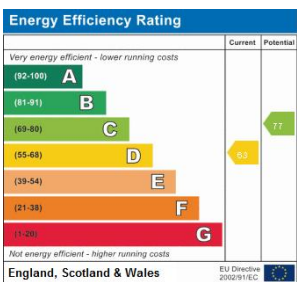
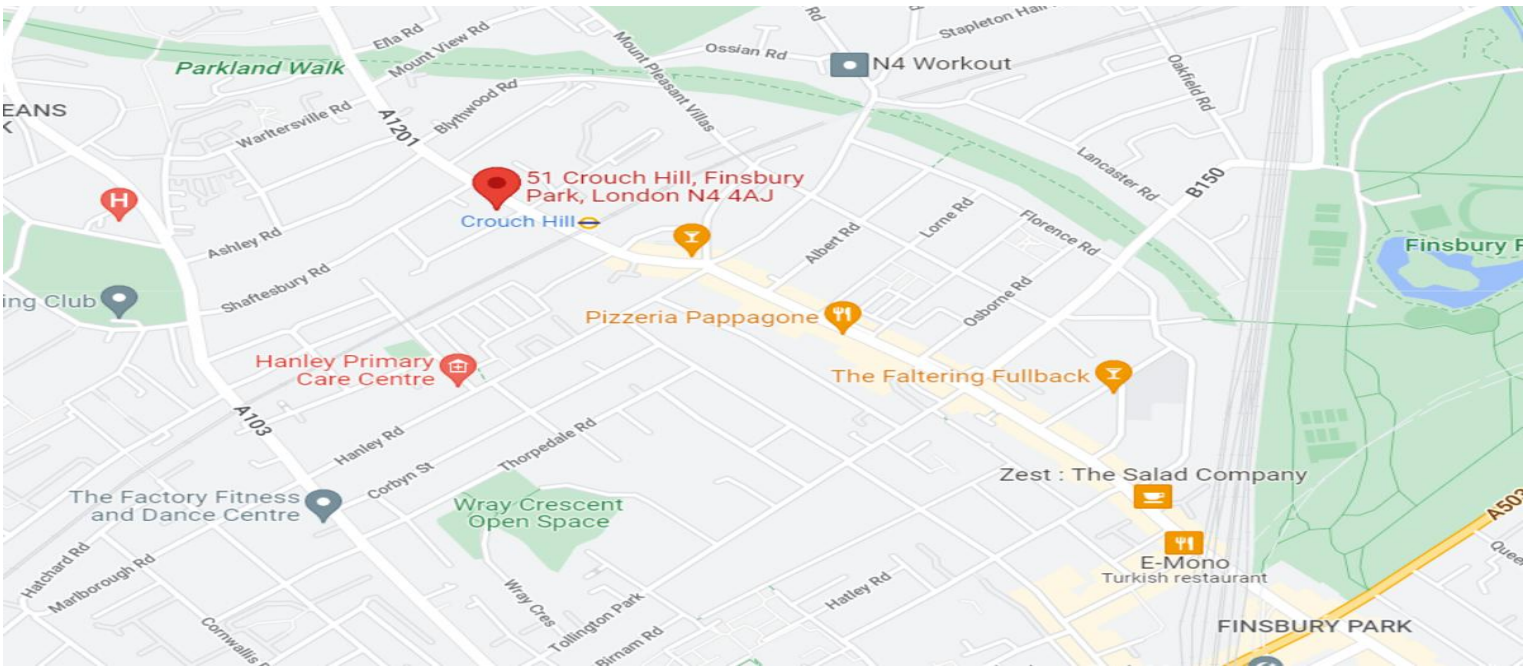


51 CROUCH HILL N4

TOTAL APPROX. FLOOR AREA 505 SQ.FT. (46.9 SQ.M.)

Whilst every attempt has been made to ensure the accuracy of the floor plan contained here, measurements of doors, windows, rooms and any other items are approximate and no responsibility is taken for any error, omission, or mis-statement. This plan is for illustrative purposes only and should be used as such by any prospective purchaser. The services, systems and appliances shown have not been tested and no guarantee as to their operability or efficiency can be given

Made with Metropix ©2016



**Tenure:**  
Leasehold

**Ground rent:**

**Service Charges:**

**Local Authority:**  
Islington London  
Borough Council

**Viewings:**  
Strictly by appointment via  
HOBARTS ESTATE AGENTS  
020 8342 9000

**Contact:**  
23 Ferme Park Road  
N4 4DS

**stroudgreen@hobarts.co.uk**  
**www.hobarts.co.uk**



These property details, including measurements, floor plans and items depicted in photographs etc. are intended only as a brief guide to prospective purchasers and are not intended to be relied upon for any purpose whatsoever. Any interested party should satisfy themselves by inspection or otherwise as to the correctness of each statement contained in these details.